

SONY

make.believe

Working Instructions

- mechanical -



Xperia S

LT26i, SO-02D

CONTENTS

1	Exterior Views	4
1.1	LT26i	4
2	Tools	5
3	Disassembly	6
3.1	Cover Rear Assy	6
3.2	Cover Bottom	6
3.3	Battery.....	7
3.4	Rear Frame Assy	8
3.5	Main Camera.....	9
3.6	Main PBA	9
3.7	Cover Transparent Assy & Cover Front Assy.....	11
4	Replacement	13
4.1	Cover Rear Assy	13
4.2	Cover Bottom	13
4.3	Battery.....	13
4.4	Rear Frame Assy	13
4.5	Main Camera.....	14
4.6	Cover Front Assy	14
4.7	Cover Transparent Assy	14
4.8	Ant GPS	15
4.9	Audio Jack.....	17
4.10	Cap HDMI	19
4.11	Cap RF	20
4.12	Cap USB.....	21
4.13	Carrier Holder Bottom.....	23
4.14	Carrier Holder Proximity Sensor	24
4.15	Carrier Vibrator.....	25
4.16	Core Unit Label.....	26
4.17	Cushion Camera 1	28
4.18	Cushion Receiver	29
4.19	Cushion Speaker	31
4.20	Cushion Sub PBA	33
4.21	Cushion Vib	35
4.22	Ear Speaker	36
4.23	Foil Adhesive Audio Jack.....	38
4.24	Foil Adhesive GPS Ant	40
4.25	Foil Adhesive NFC PBA	42
4.26	Foil Adhesive Speaker	44
4.27	Foil Adhesive Transparent Front	46

4.28 FPC Jack Assy	48
4.29 FPC Main Assy	50
4.30 Key Camera	54
4.31 Key On/Off	55
4.32 Key Volume	56
4.33 Loudspeaker.....	57
4.34 Main Antenna.....	59
4.35 NFC Antenna	61
4.36 PBA Bottom.....	62
4.37 PBA NFC	63
4.38 RF Cable	65
4.39 Sheet GPS Ant.....	66
4.40 Sheet LCD FPC.....	67
4.41 Sheet NFC FPC.....	69
4.42 Sheet NFC Shield	70
4.43 Sheet Protection LCD	72
4.44 Shield Can BB A.....	73
4.45 Shield Can BB B.....	74
4.46 Shield Can Lid Non Cell.....	75
4.47 Shield Can RF.....	76
4.48 Water Indicator	77
4.49 Water Indicator L.....	78
4.50 Board Swap - Replacement	79
4.51 Board Swap – Change Label	79
5 Reassembly.....	80
5.1 Cover Front Assy & Cover Transparent Assy.....	80
5.2 Main PBA	83
5.3 Main Camera.....	84
5.4 Rear Frame Assy.....	85
5.5 Battery.....	85
5.6 Cover Bottom	87
5.7 Cover Rear Assy	88
6 Country of Origin Barcodes for Brazil/VIVO Labels.....	89
7 Revision History	90

**For general information about mechanical repair related issues, refer to
1220-1333: Generic Repair Manual - mechanical**

1 Exterior Views

1.1 LT26i



2 Tools

SPECIAL TOOLS

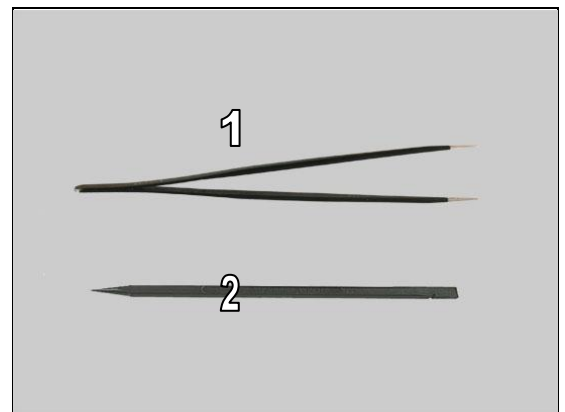
1. Torque Screwdriver
2. Flex Film Assembly Tool
3. Front Opening Tool
4. Bits(T5)
5. Bits(JCIS No 0)
6. Guitar Pick



For part no's on the tools above, refer to the 'Tools Catalogue/Matrix'!

STANDARD TOOLS

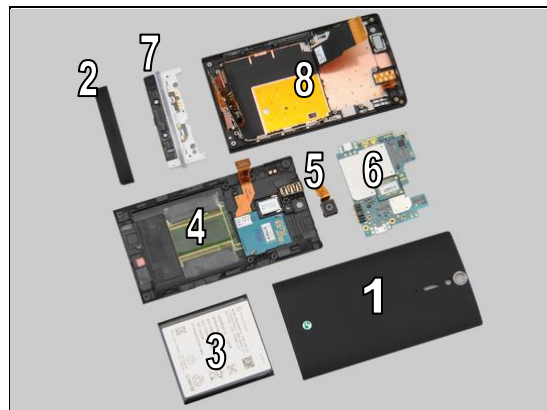
1. Tweezers
2. Nylon Pointer



3 Disassembly

The disassembly is done in the following order:

1. Cover Rear Assy
2. Cover Bottom
3. Battery
4. Rear Frame Assy
5. Main Camera
6. Main PBA
7. Cover Transparent Assy
8. Cover Front Assy



3.1 Cover Rear Assy

Push upwards to unsnap the hooks of the Cover Rear Assy from the bottom gently and remove it.



3.2 Cover Bottom

Push the Cover Bottom to show the gap between the Cover Bottom and the Cover Transparent Assy with your fingers and insert Guitar Pick to release the hooks of the Cover Bottom.



Remove the Cover Bottom with your fingers.

Scrap! Not to be reused!



Disassembly

3.3 Battery

Remove the seven screws Len:3.5 Diam:1.4 by T5.



Remove the three screws Len:3.5 Diam:1.4M by Bits(JCIS No 0).

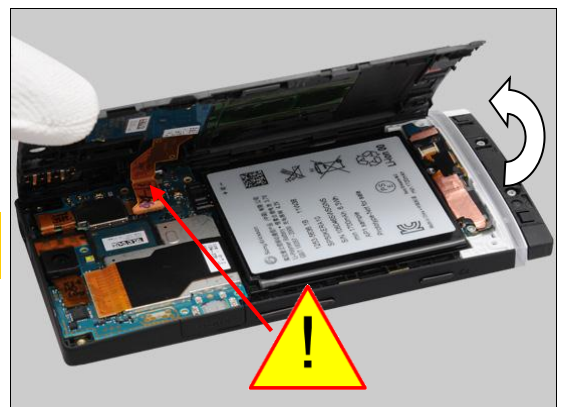


Insert the Guitar Pick from the right bottom as shown in the picture and gently slide back and forth to release the hooks of the Rear Frame.



Raise the left side of the Rear Frame approximately 60° from the right side.

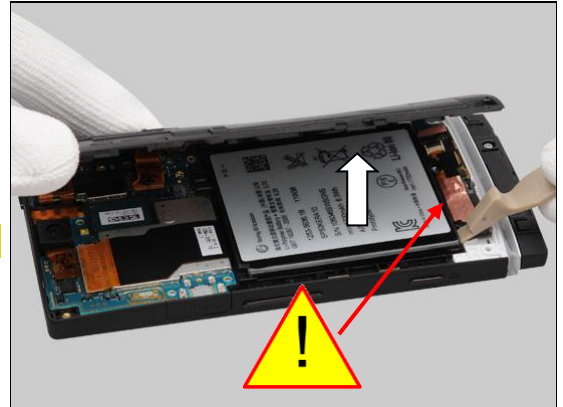
Do not open the cover more than 60° and do not stretch the NFC PFC!



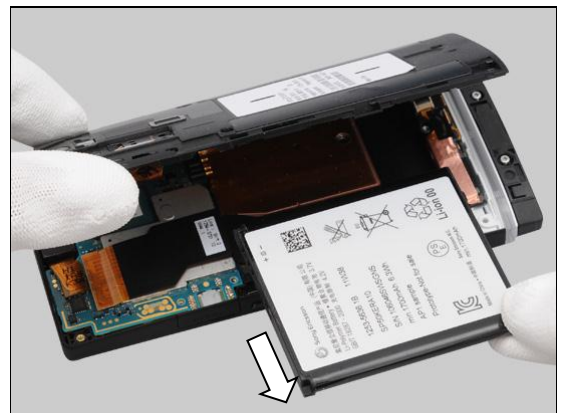
Disassembly

Insert the Front Opening Tool and raise the bottom of the Battery to release it.

Do not touch the FPC area beside the Battery!



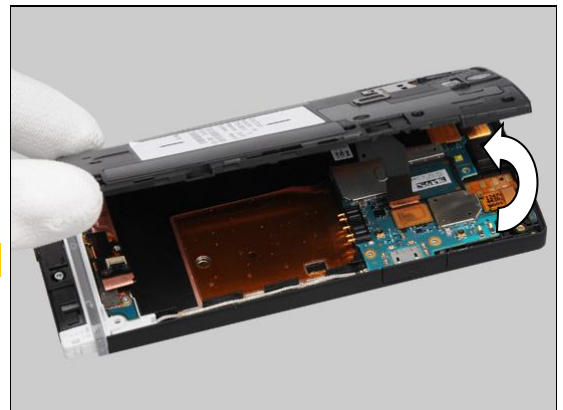
Remove the Battery.



3.4 Rear Frame Assy

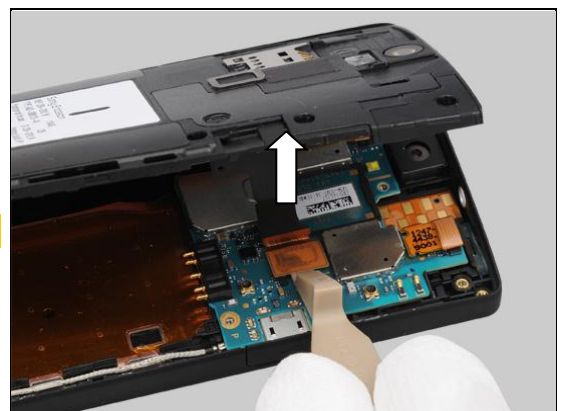
Change to raise another side of the Rear Frame.

Do not open the Rear Frame Assy more than 60°!



Unsnap the BtB connector by using the Front Opening Tool.

No conductive tools should be used!



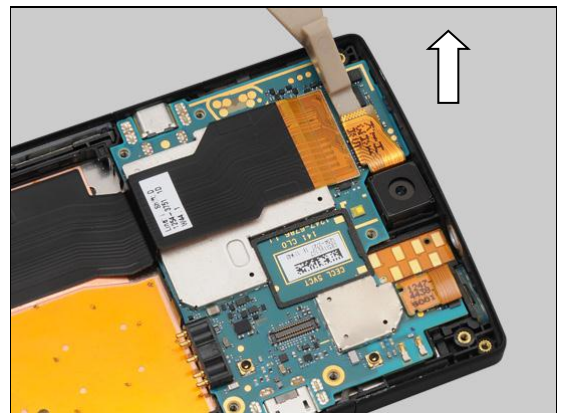
Disassembly

Remove the Rear Frame Assy with your fingers.

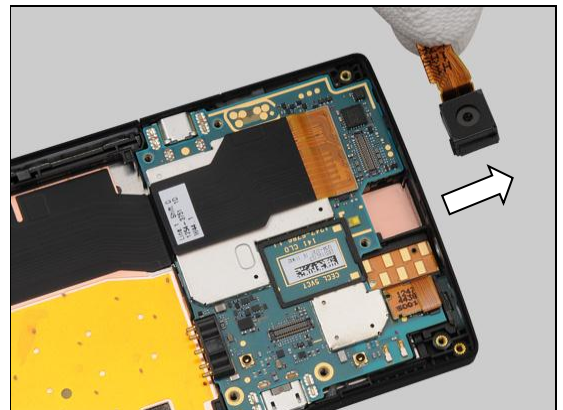


3.5 Main Camera

Unsnap the BtB connector by using the Front Opening Tool.

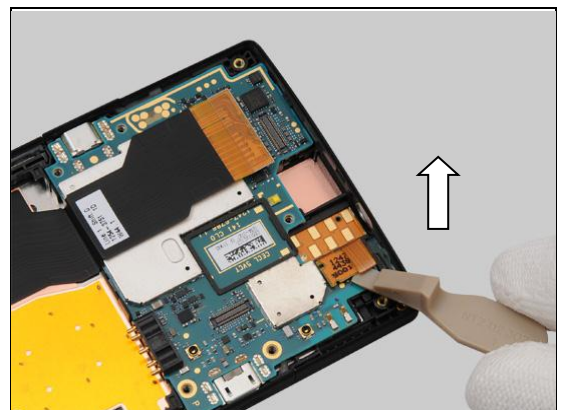


Remove the Main Camera with your fingers.



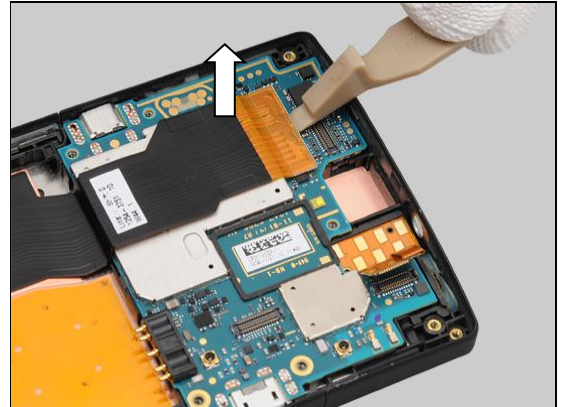
3.6 Main PBA

Unsnap the FPC Jack BtB connector by using the Front Opening Tool.

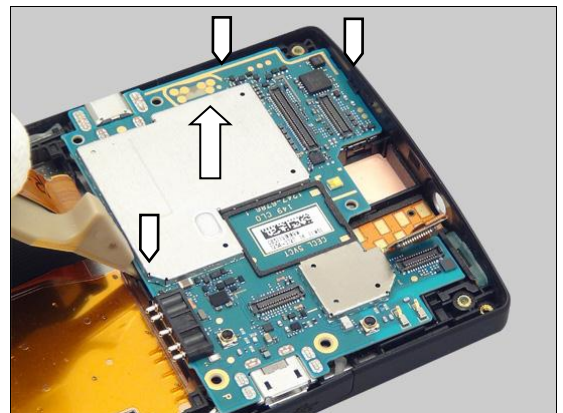


Disassembly

Unsnap the Main FPC BtB connector by using the Front Opening Tool.

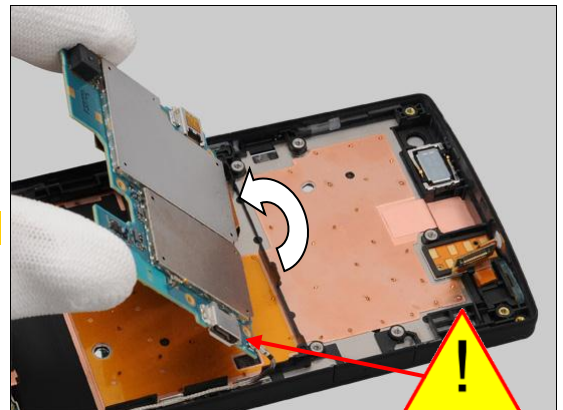


Insert the Front Opening Tool to release the Main PBA.

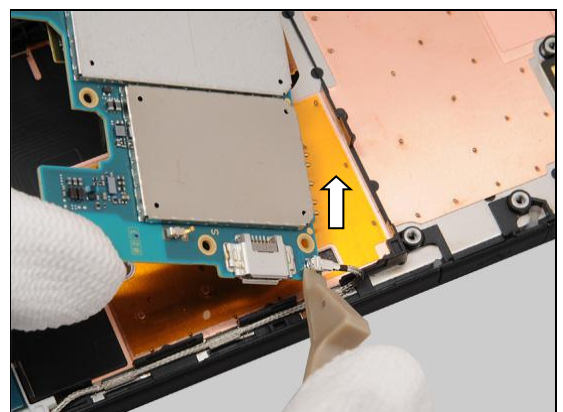


Turn the main PBA over gently.

Do not stretch the RF Cable!

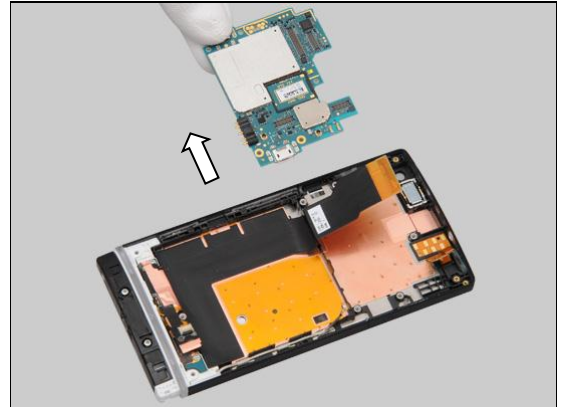


Unsnap one side of the RF Cable by using the Front Opening Tool.



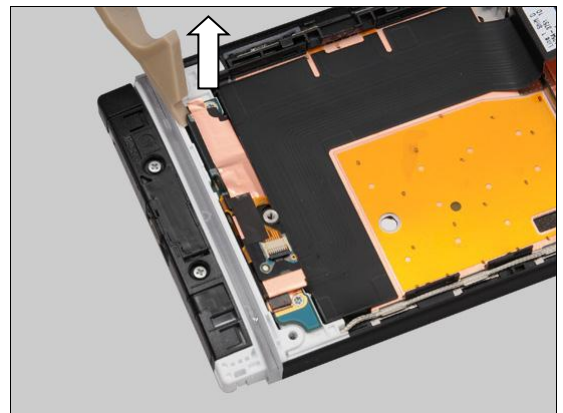
Disassembly

Remove the Main PBA with your fingers.

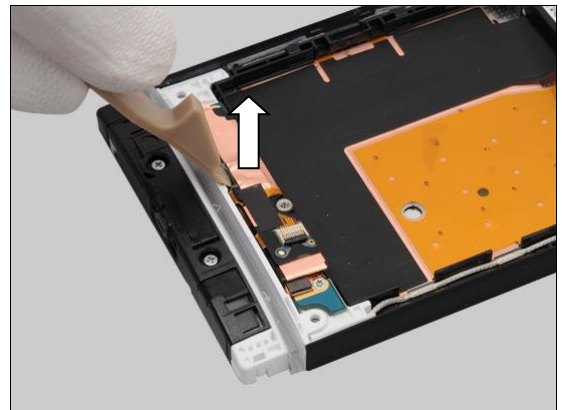


3.7 Cover Transparent Assy & Cover Front Assy

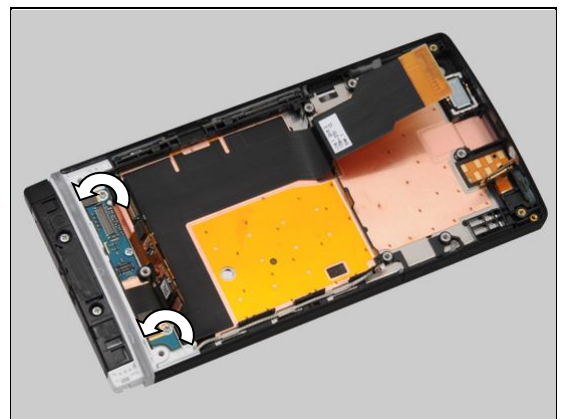
Unsnap the LCD BtB connector by using the Front Opening Tool.



Unsnap the touch panel BtB connector by using the Front Opening Tool.



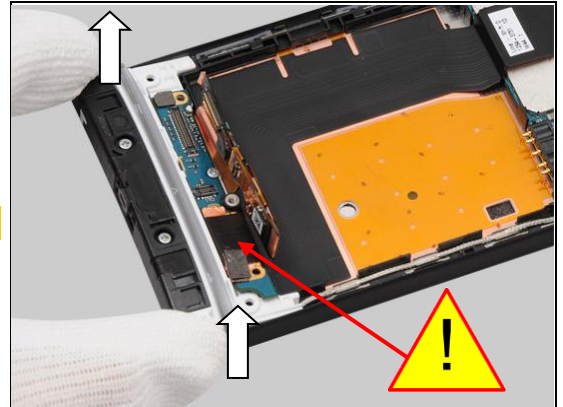
Remove the two screws Len:3.5 Diam:1.4M by Bits(JCIS No 0).



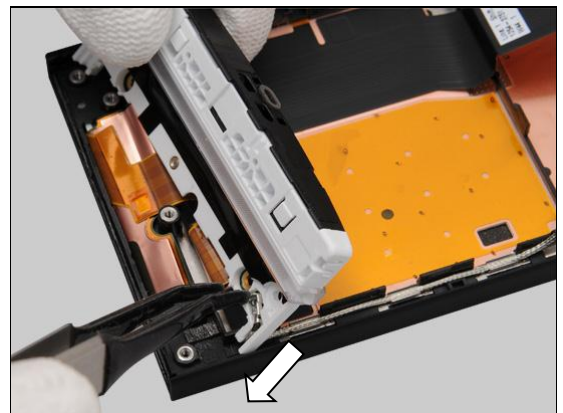
Disassembly

Lift up the Cover Transparent and Turn it over gently.

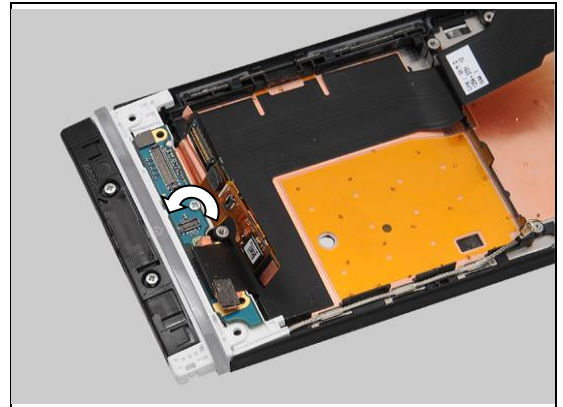
Do not open the Sheet ACF Relay from the PBA!



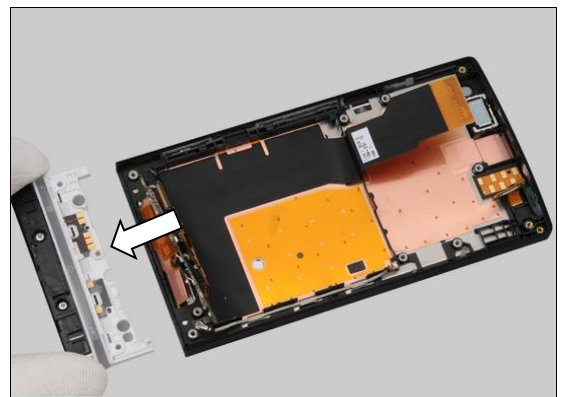
Unsnap one side of the RF Cable by using the Flex Film Assembly Tool.



Remove the one screw Len:2.0 Diam:1.4 by Bits(JCIS No 0).



Remove the Cover Transparent Assy.



4 Replacement

4.1 Cover Rear Assy

Follow the 3.1 Disassembly instructions!

Prepare the new Cover Rear Assy.

Follow the 5.7 Reassembly instructions!



4.2 Cover Bottom

Follow the 3.2 Disassembly instructions!

Prepare the new Cover Bottom.

Follow the 5.6 Reassembly instructions!



4.3 Battery

Follow the 3.1 – 3.3 Disassembly instructions!

Prepare the new Battery.

Follow the 5.5 – 5.7 Reassembly instructions!



4.4 Rear Frame Assy

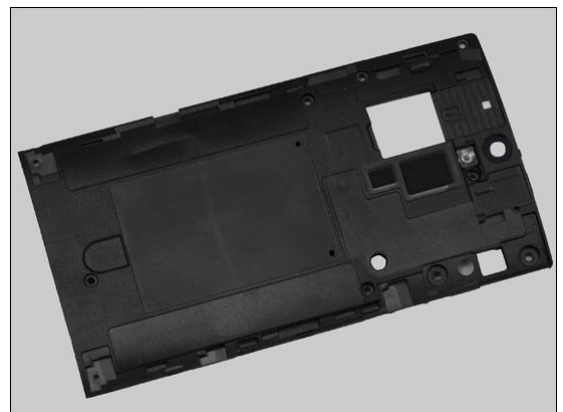
Follow the 3.1 – 3.4 Disassembly instructions!

Follow the 4.8, 4.9, 4.11, 4.36, Removal instructions!

Prepare the new Rear Frame Assy.

Follow the 4.8, 4.9, 4.11, 4.16, 4.23, 4.24, 4.25, 4.26, 4.33, 4.35, 4.37, 4.48, 4.49 Installation instructions!

Follow the 5.4 – 5.7 Reassembly instructions!



Replacement

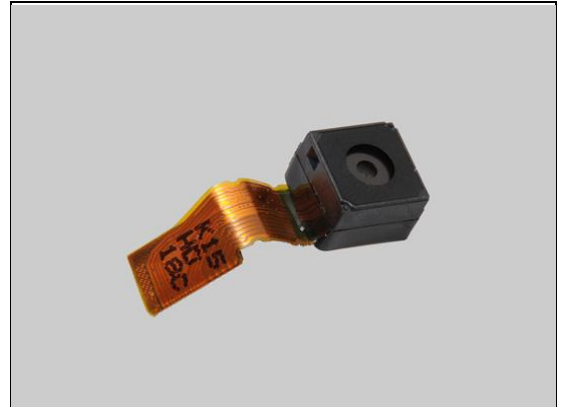
4.5 Main Camera

Follow the 3.1 – 3.5 Disassembly instructions!

Prepare a new Main Camera.

Follow the 4.17 Installation instructions!

Follow the 5.3 – 5.7 Reassembly instructions!



4.6 Cover Front Assy

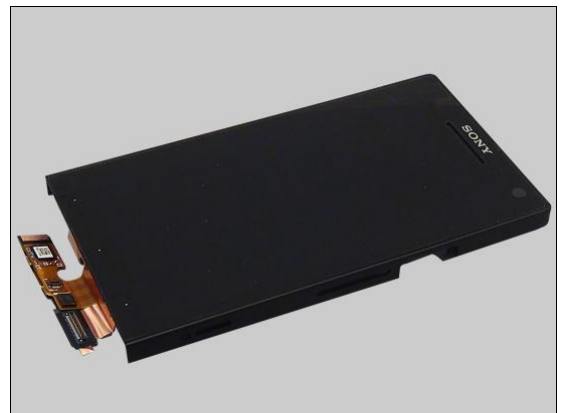
Follow the 3.1 – 3.7 Disassembly instructions!

Follow the 4.10, 4.12, 4.14, 4.22, 4.28, 4.30, 4.31, 4.32, 4.38 Removal instructions!

Prepare a new Cover Front Assy.

Follow the 4.10, 4.12, 4.14, 4.18, 4.20, 4.22, 4.28, 4.29, 4.30, 4.31, 4.32, 4.38 Installation instructions!

Follow the 5.1 – 5.7 Reassembly instructions!



4.7 Cover Transparent Assy

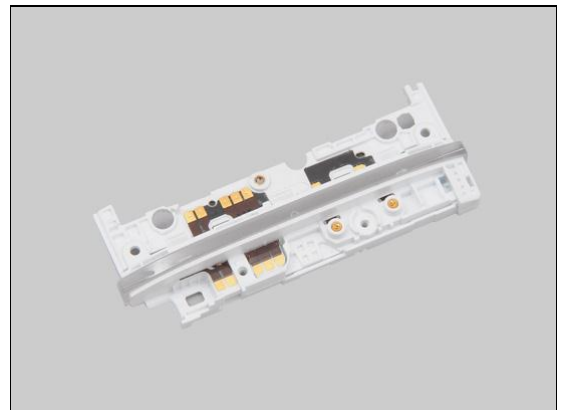
Follow the 3.1 – 3.4, 3.7 Disassembly instructions!

Follow the 4.13, 4.34, 4.36 Removal instructions!

Prepare the new Cover Transparent Assy.

Follow the 4.13, 4.27, 4.34, 4.36 Installation instructions!

Follow the 5.1, 5.4 – 5.7 Reassembly instructions!



Replacement

4.8 Ant GPS

Follow the 3.1 – 3.4 Disassembly instructions!

Follow the 4.24 Removal instructions!

Carry out the Removal as described below.

Prepare the new Ant GPS.

Carry out the Installation as described below.

Follow the 4.39 Installation instructions!

Follow the 4.24 Installation instructions!

Follow the 5.4 – 5.7 Reassembly instructions!

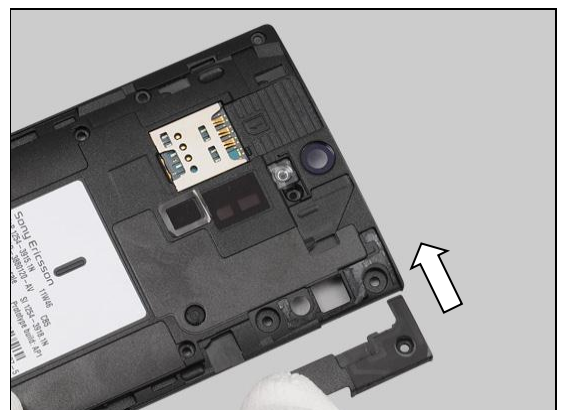
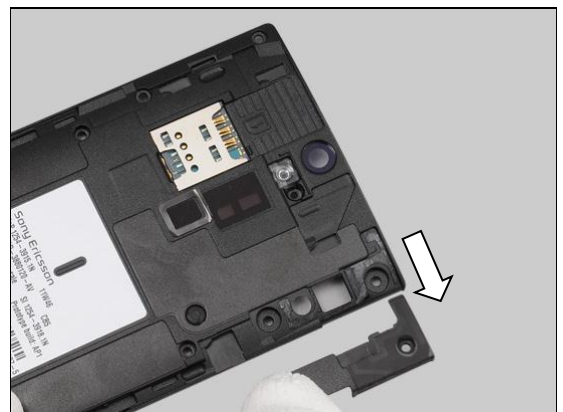
REMOVAL

Detach the Ant GPS by using the Front Opening Tool.

Remove it with your fingers.

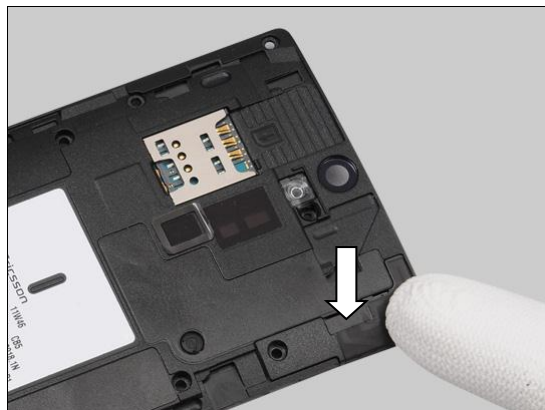
INSTALLATION

Place the new Ant GPS in the correct position.



Replacement: Ant GPS

Press to secure its attachment.



Replacement

4.9 Audio Jack

Follow the 3.1 – 3.4 Disassembly instructions!

Follow the 4.23 Removal instructions!

Carry out the Removal as described below.

Prepare the new Audio Jack

Follow the 4.23 Installation instructions!

Carry out the Installation as described below.

Follow the 5.4 – 5.7 Reassembly instructions!

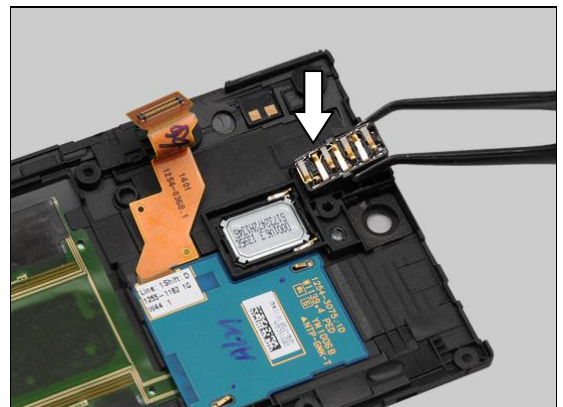
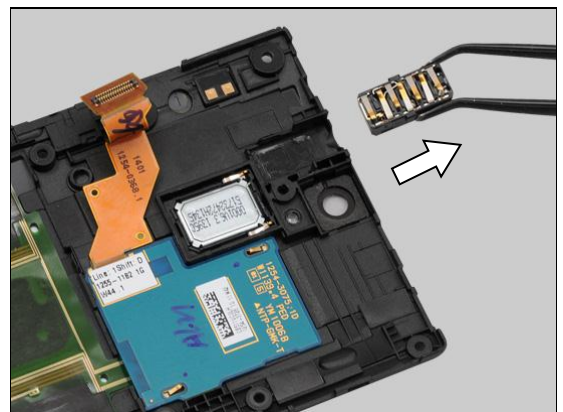
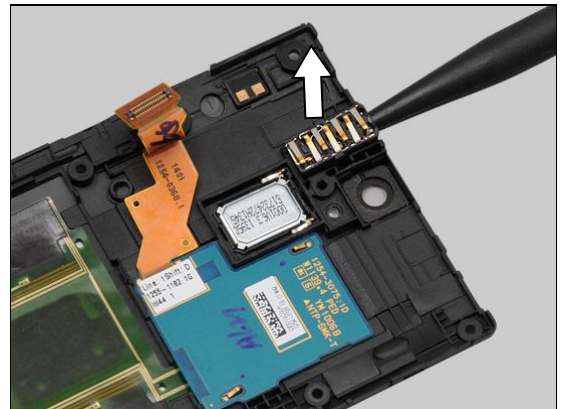
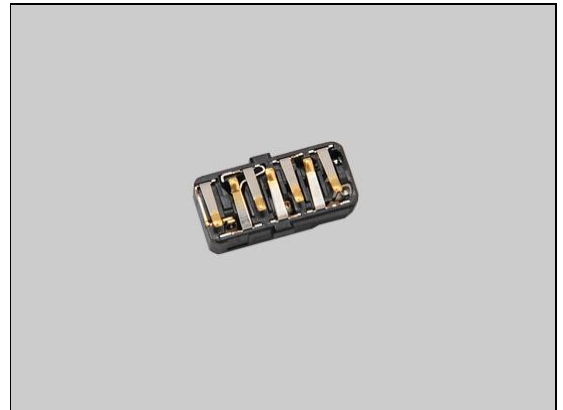
REMOVAL

Insert the Nylon Pointer into the hole of the Audio Jack connector to release it.

Remove the Audio Jack by using the Flex Film Assembly Tool.

INSTALLATION

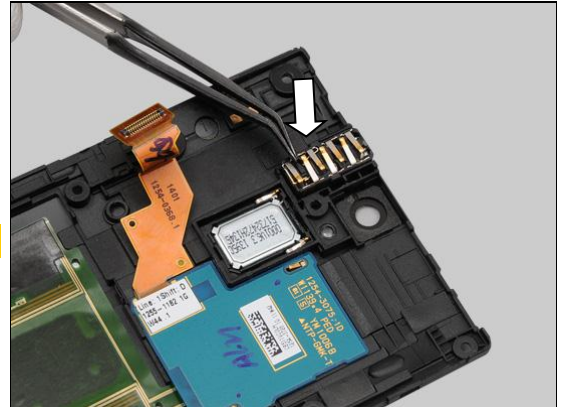
Place the new Audio Jack into its socket.



Replacement: Audio Jack

Press to secure its position by using the Flex Film Assembly Tool.

Do not touch the contact pins on the Audio Jack!



Replacement

4.10 Cap HDMI

Follow the 3.1 – 3.6 Disassembly instructions!

Carry out the Removal as described below.

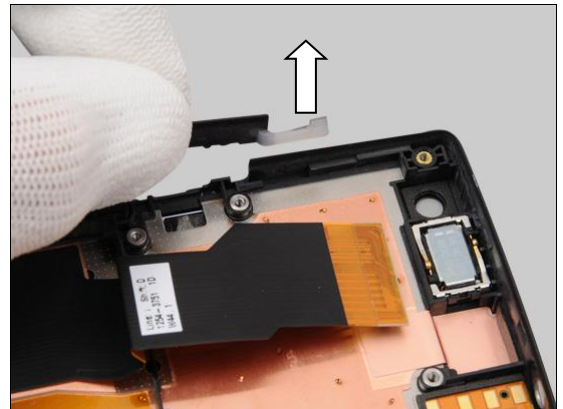
Prepare the new Cap HDMI.

Carry out the Installation as described below.

Follow the 5.2 – 5.7 Reassembly instructions!

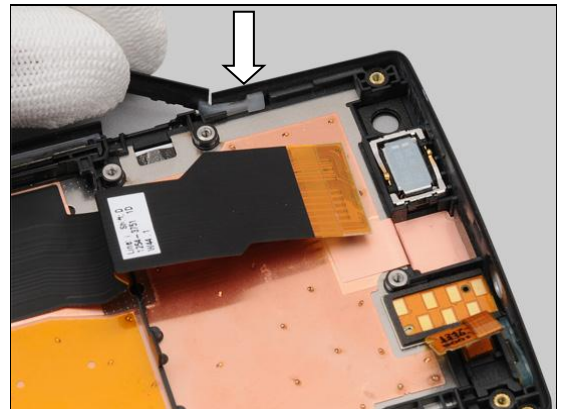
REMOVAL

Lift up the Cap HDMI to remove it with your fingers.

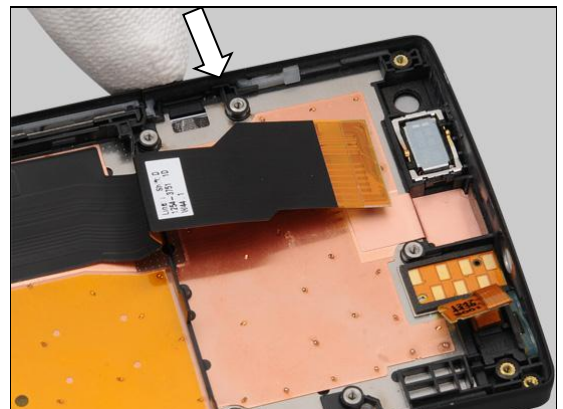


INSTALLATION

Place the Cap HDMI in the correct position as shown in the picture.



Press to secure its position.



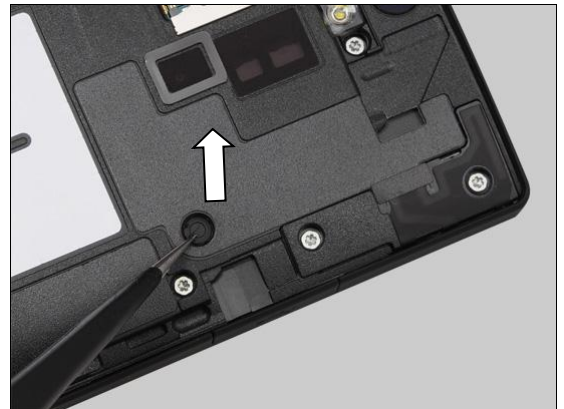
Replacement

4.11 Cap RF

Follow the 3.1 Disassembly instructions!
Carry out the Removal as described below.
Prepare the new Cap RF.
Carry out the Installation as described below.
Follow the 5.7 Reassembly instructions!

REMOVAL

Lift up the Cap RF by using the Tweezers and remove it.

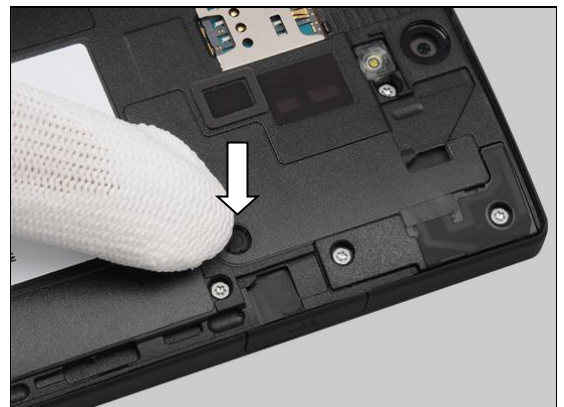


INSTALLATION

Place the new Cap RF in the correct position.



Press the Cap RF into its proper position.



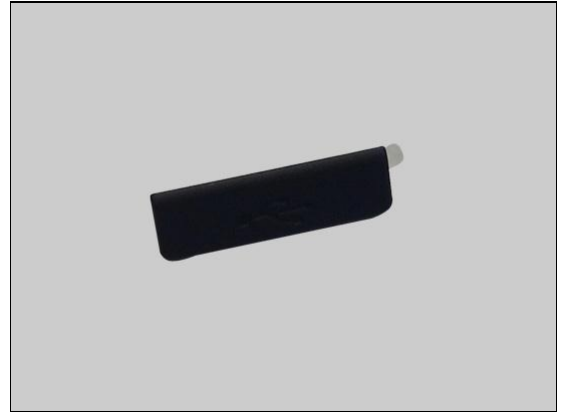
Replacement

4.12 Cap USB

Carry out the Removal as described below
Prepare the new Cap USB.
Carry out the Installation as described below.

REMOVAL

Insert the Front Opening Tool to release the Cap USB.



Pull to release the Cap USB from its hole with your fingers.



INSTALLATION

Insert the Cap USB into its hole with your fingers.



Replacement: Cap USB

Press to secure its position.



Replacement

4.13 Carrier Holder Bottom

Follow the 3.1 – 3.4 Disassembly instructions!

Follow the 4.34 Removal instruction!

Carry out the Removal as described below.

Prepare the new Carrier Holder Bottom.

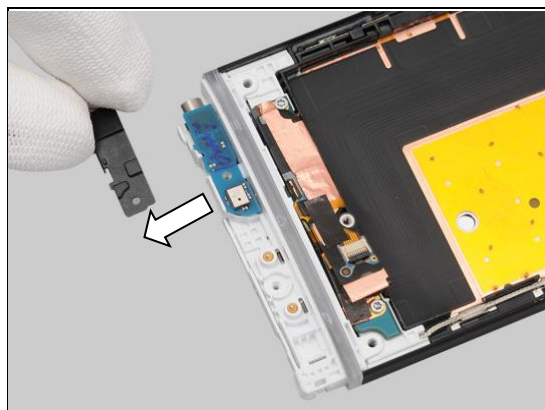
Carry out the Installation as described below.

Follow the 4.34, 4.21 Installation instructions!

Follow the 5.4 – 5.7 Reassembly instructions!

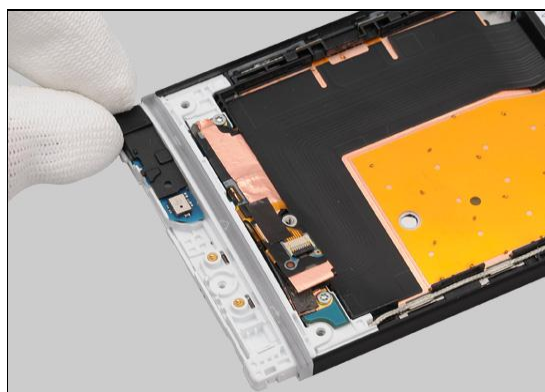
REMOVAL

Remove the Carrier Holder Bottom with your fingers.



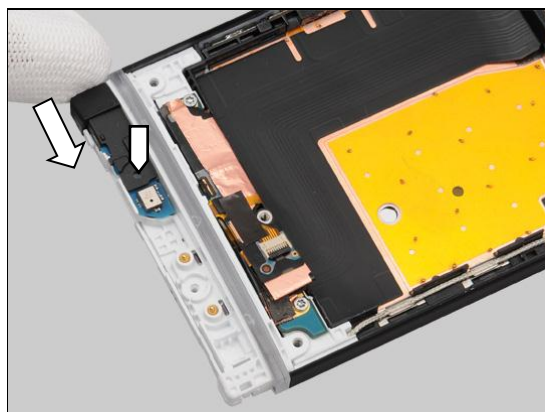
INSTALLATION

Place the Carrier Holder Bottom in the correct position.



Press to secure its position.

The guiding hole must be aligned accurately between the Carrier Holder Bottom and the PBA Bottom!



Replacement

4.14 Carrier Holder Proximity Sensor

Follow the 3.1 – 3.6 Disassembly instructions!

Follow the 4.28 Removal instructions!

Carry out the Removal as described below.

Prepare the new Carrier Holder Proximity Sensor.

Carry out the Installation as described below.

Follow the 4.28 Installation instructions!

Follow the 5.2 – 5.7 Reassembly instructions!

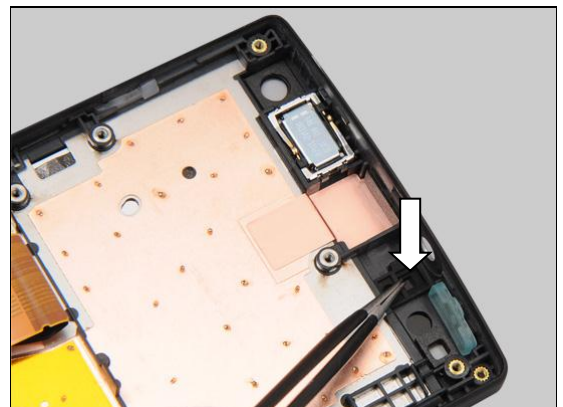
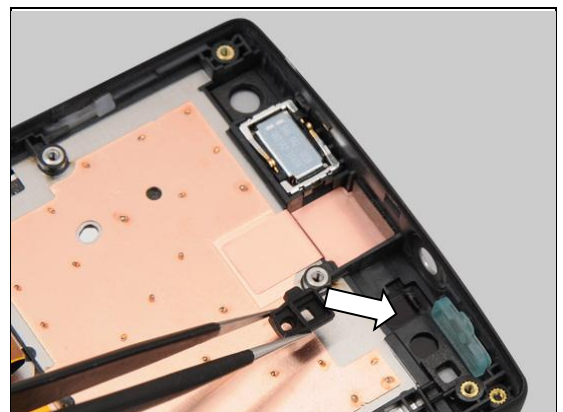
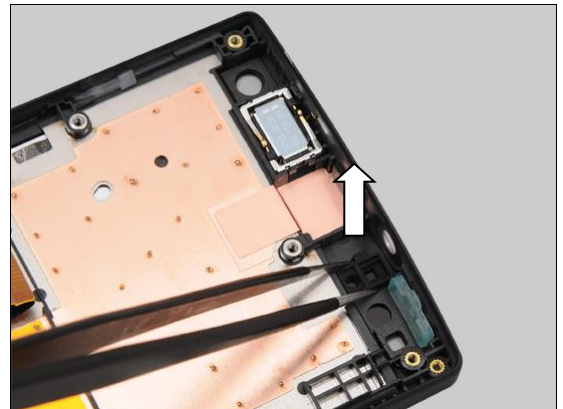
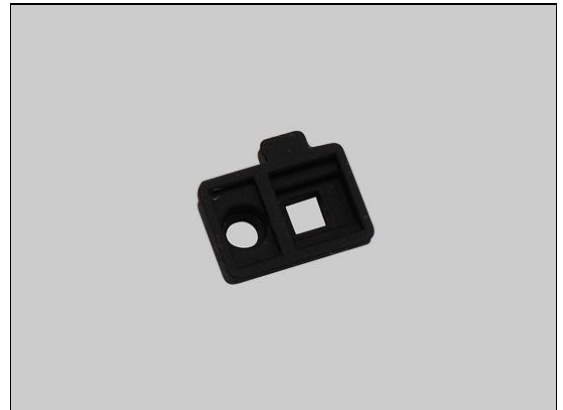
REMOVAL

Detach the Carrier Holder Proximity Sensor by using the Tweezers and remove it.

INSTALLATION

Place the Carrier Holder Proximity Sensor in the correct position.

Press to secure its position.



Replacement

4.15 Carrier Vibrator

Follow the 3.1 – 3.4 Disassembly instructions!

Follow the 4.34, 4.13, 4.36 Removal instructions!

Carry out the Removal as described below.

Prepare the new Carrier Vibrator.

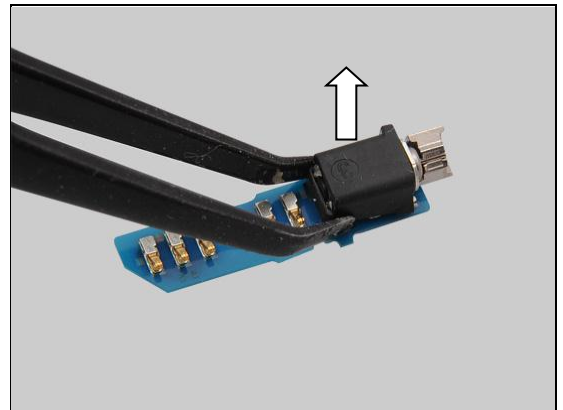
Carry out the Installation as described below.

Follow the 4.34, 4.13, 4.36 Installation instructions!

Follow the 5.4 – 5.7 Reassembly instructions!

REMOVAL

Detach the Carrier Vibrator by using the Flex Film Assembly Tool and remove it.

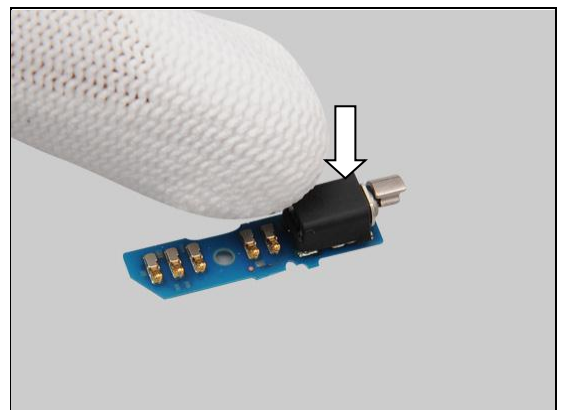


INSTALLATION

Place the new Carrier Vibrator in the correct position.



Press to secure its position.



Replacement

4.16 Core Unit Label

Follow the 3.1 Disassembly instructions!

Carry out the Removal as described below.

Prepare the new Core Unit Label.

Carry out the Installation as described below.

Follow the 5.7 Reassembly instructions!

REMOVAL

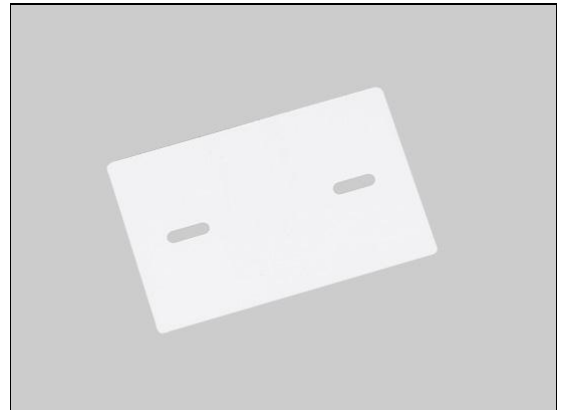
Read the old Label Core Unit and write the information into the 'LabelMake' program.

Carefully remove the Label by using the Flex Film Assembly Tool.

INSTALLATION

Check that the proper label format is loaded in the Zebra printer and write a new Label by using the 'LabelMake' software.

One label only is allowed!



Replacement: Core Unit Lable

Press along the surface to make Label securely attached.



Replacement

4.17 Cushion Camera 1

Follow the 3.1 – 3.5 Disassembly instructions!
Carry out the Removal as described below.
Prepare the new Cushion Camera 1.
Carry out the Installation as described below.
Follow the 5.3 – 5.7 Reassembly instructions!

REMOVAL

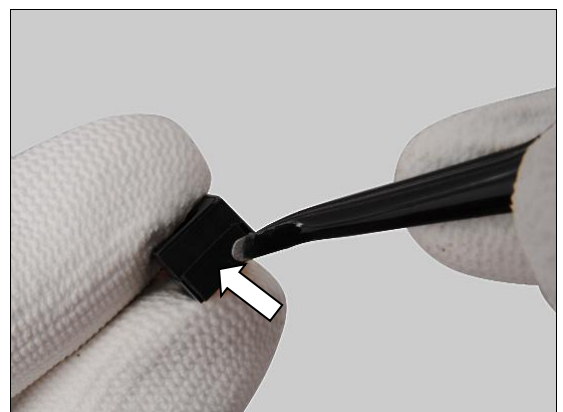
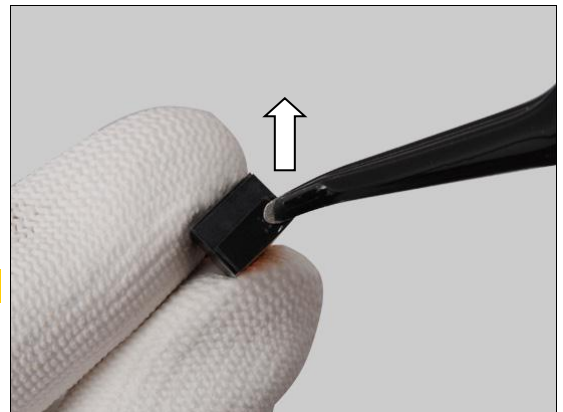
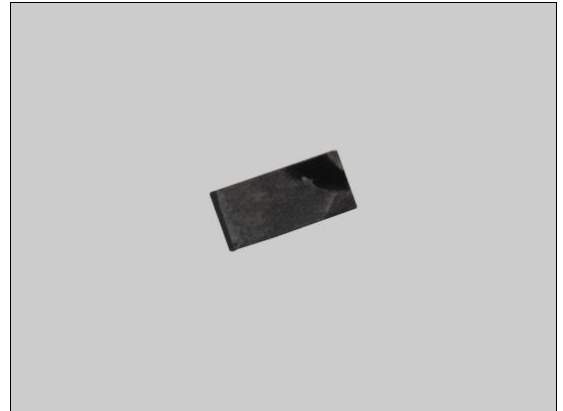
Peel off the Cushion Camera 1 by using the Flex Film Assembly Tool.

Scrap! Not to be reused!

INSTALLATION

Place the new Cushion Camera 1 in the correct position.

Press to secure its attachment.



Replacement

4.18 Cushion Receiver

Follow the 3.1 –3.6 Disassembly instructions!

Follow the 4.22 Removal instructions!

Carry out the Removal as described below.

Prepare the new Cushion Receiver.

Carry out the Installation as described below.

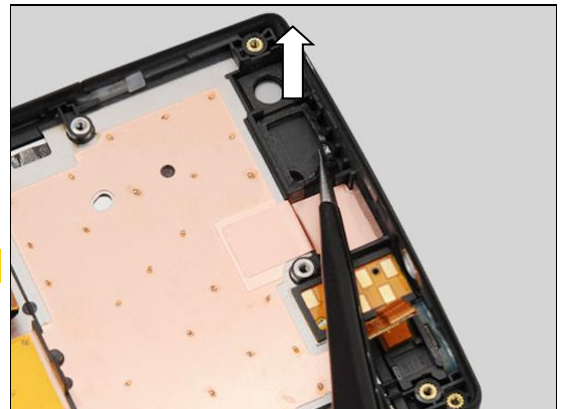
Follow the 4.22 Installation instructions!

Follow the 5.2 – 5.7 Reassembly instructions!

REMOVAL

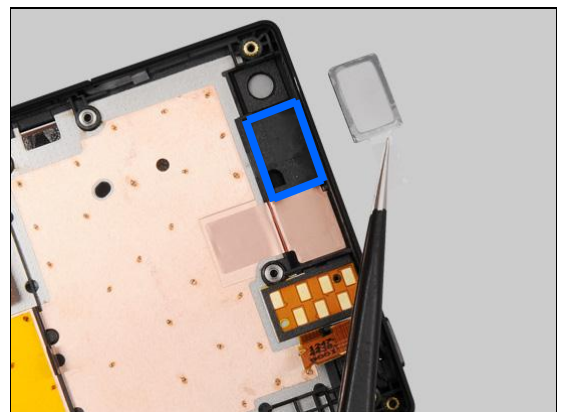
Peel off the Cushion Receiver by using the Tweezers.

Scrap! Not to be reused!

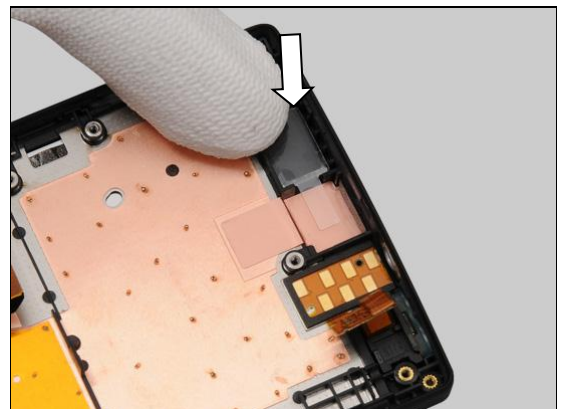


INSTALLATION

Place the Cushion Receiver in the correct position.

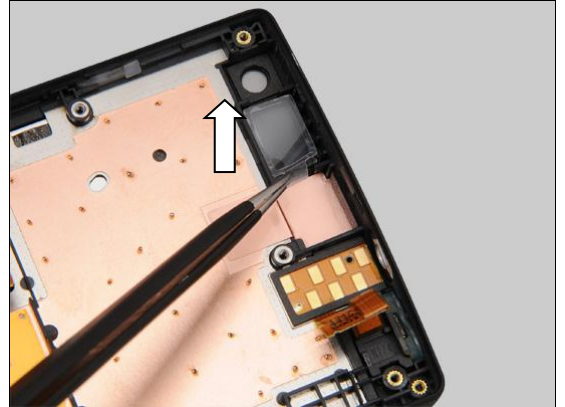


Press to secure its attachment.



Replacement: Cushion Receiver

Peel off the protective film.



Replacement

4.19 Cushion Speaker

Follow the 3.1– 3.6 Disassembly instructions!
Carry out the Removal as described below.
Prepare the new Cushion Speaker.
Carry out the Installation as described below.
Follow the 5.2 – 5.7 Reassembly instructions!

REMOVAL

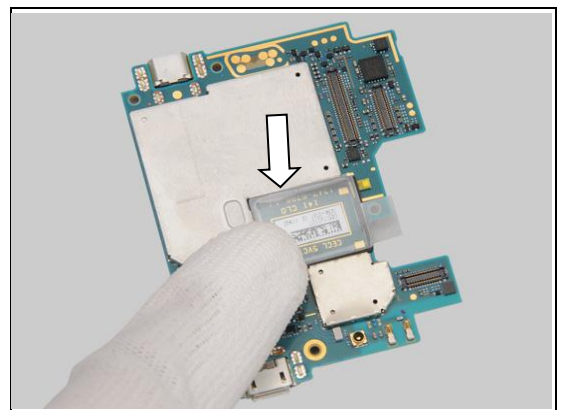
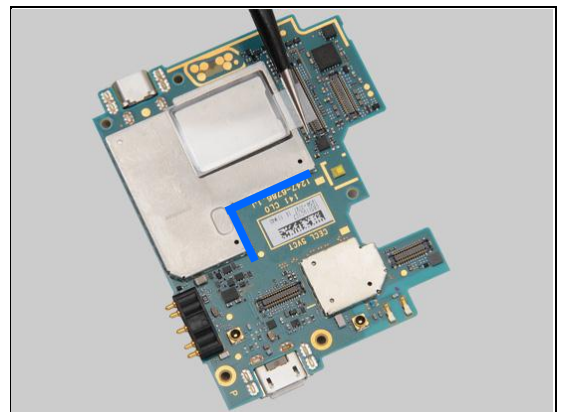
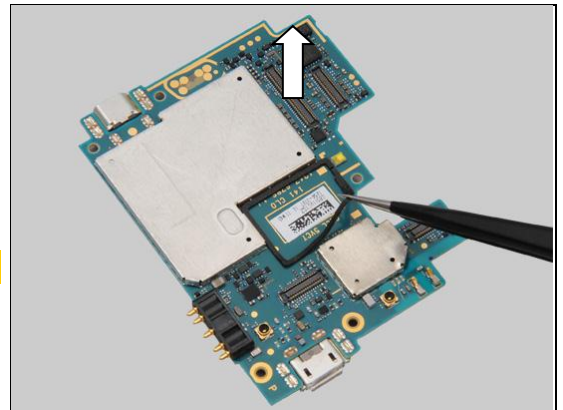
Peel off the Cushion Speaker by using the Tweezers.

Scrap! Not to be reused!

INSTALLATION

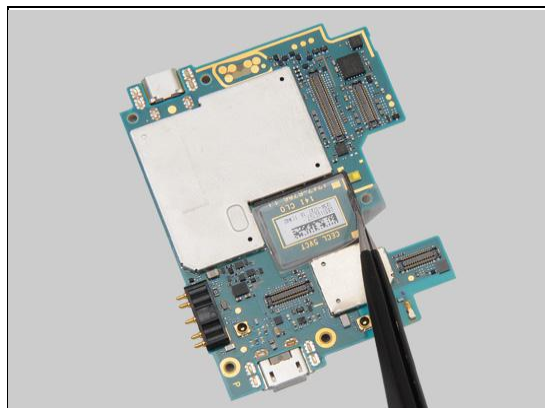
Place the Cushion Speaker aligning the Shield Can BB B guide lines as shown in the picture.

Press to secure its attachment.



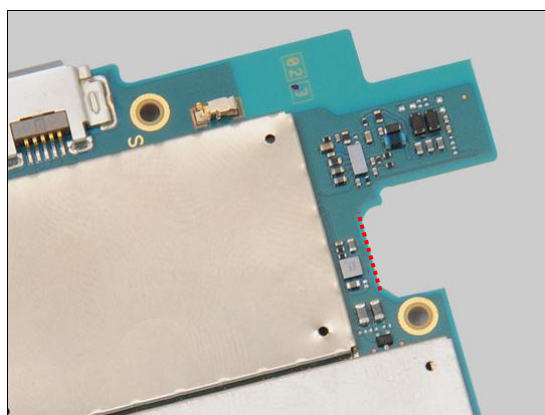
Replacement: Cushion Speaker

Peel off the protective film.



Turn over the main PBA to make sure the Cushion Speaker proper assembly.

Cushion Speaker should be within marked PBA guiding area! PBA overhang is not allowed!



Replacement

4.20 Cushion Sub PBA

Follow the 3.1 – 3.4 Disassembly instructions!

Carry out the Removal as described below.

Prepare the new Cushion Sub PBA.

Carry out the Installation as described below.

Follow the 5.4 – 5.7 Reassembly instructions!

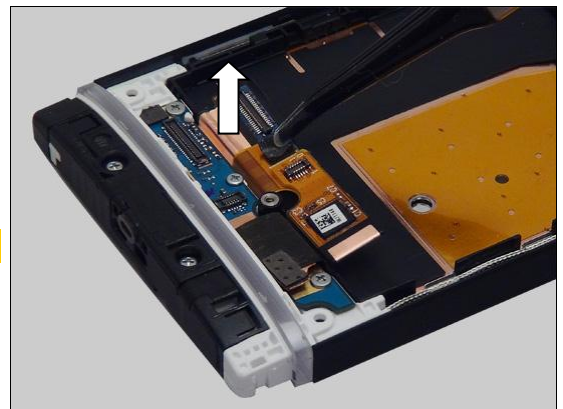
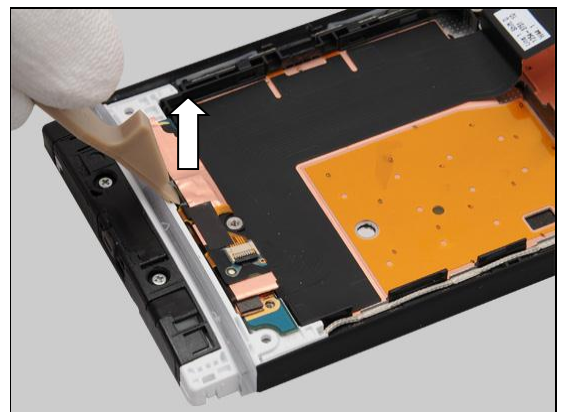
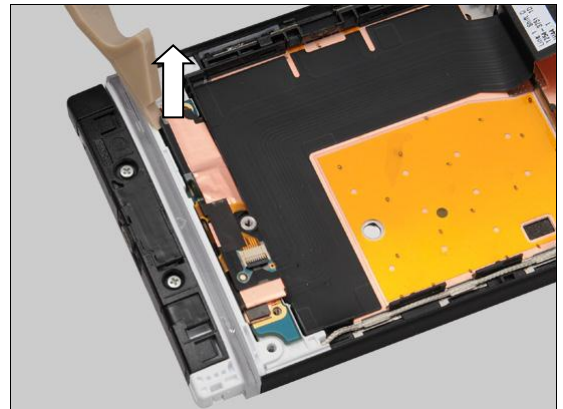
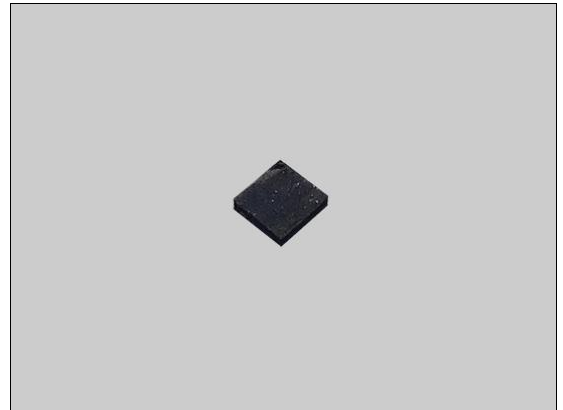
REMOVAL

Unsnap the LCD BtB connectors by using the Front Opening Tool.

Unsnap the touch panel BtB connectors by using the Front Opening Tool.

Peel off the Cushion Sub PBA by using the Flex Film Assembly Tool.

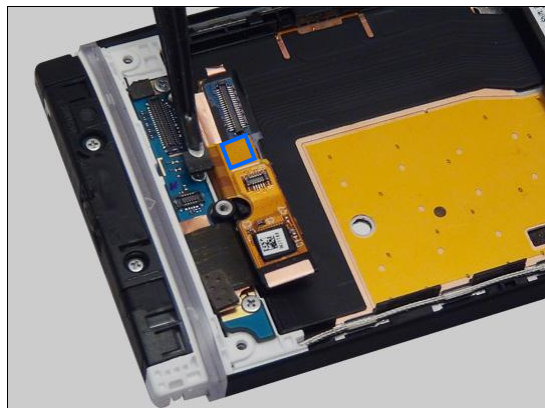
Scrap! Not to be reused!



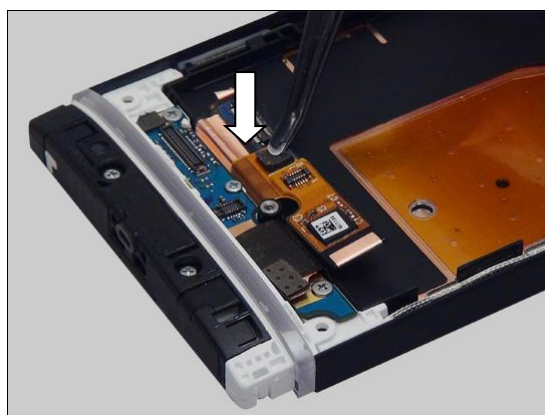
Replacement: Cushion Sub PBA

INSTALLATION

Place the new Cushion Sub PBA aligning the guiding line as shown in the picture.



Press to secure its attachment.



Replacement

4.21 Cushion Vib

Follow the 3.1 – 3.4 Disassembly instructions!
Follow the 4.34, 4.13 Removal instructions!
Carry out the Removal as described below.
Prepare the new Cushion Vib.
Carry out the Installation as described below.
Follow the 4.34, 4.13 Installation instructions!
Follow the 5.4 – 5.7 Reassembly instructions!

REMOVAL

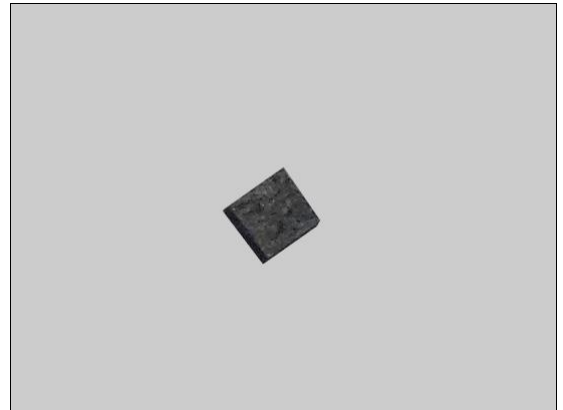
Peel off the Cushion Vib by using the Flex Film Assembly Tool.

Scrap! Not to be reused!

INSTALLATION

Place the Cushion Vib in the correct position.

Press to secure its attachment.



Replacement

4.22 Ear Speaker

Follow the 3.1 – 3.6 Disassembly instructions!

Follow the 4.18 Removal instructions

Carry out the Removal as described below.

Prepare the new Ear Speaker.

Carry out the Installation as described below.

Follow the 4.18 Installation instructions

Follow the 5.2 – 5.7 Reassembly instructions!

REMOVAL

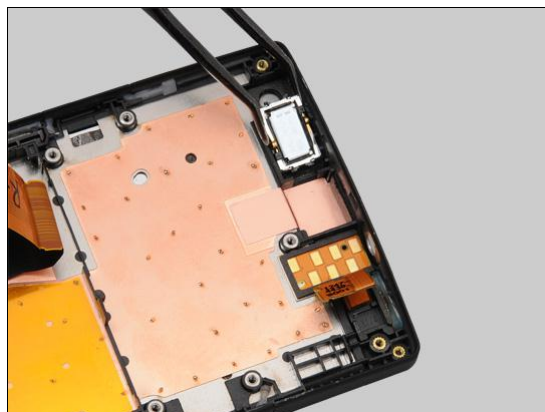
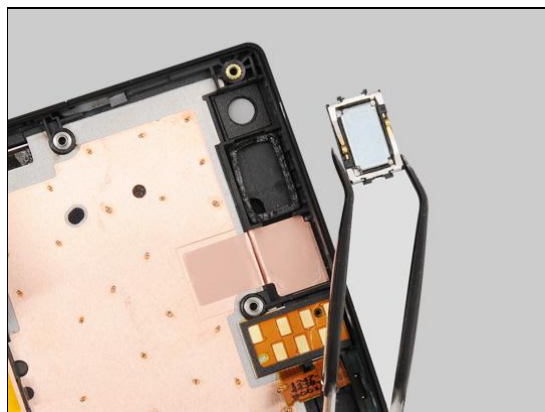
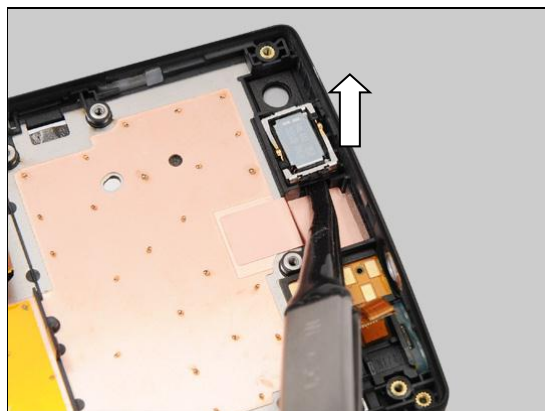
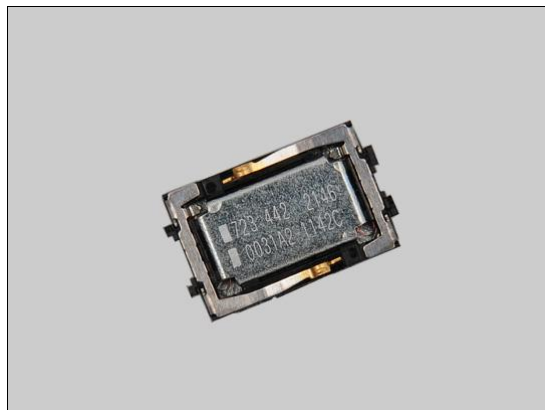
Insert the Flex Film Assembly Tool underneath and lift up to detach the Ear Speaker.

Do not touch the contact pins!

Remove the Ear Speaker by using the Flex Film Assembly Tool.

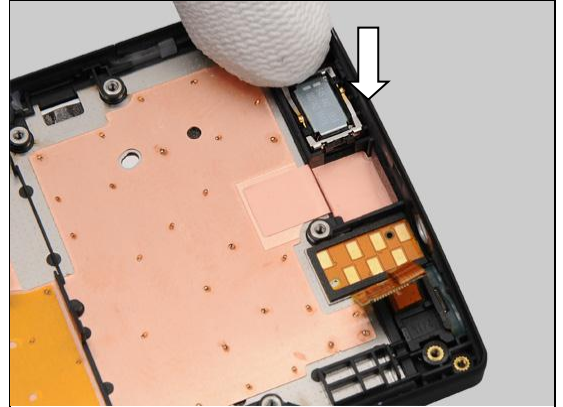
INSTALLATION

Clean the remained Cushion Receiver and place the new Ear Speaker in the correct position.



Replacement: Ear Speaker

Press to secure its attachment.



Replacement

4.23 Foil Adhesive Audio Jack

Follow the 3.1 – 3.4 Disassembly instructions!

Follow the 4.9 Removal instruction.

Carry out the Removal as described below.

Prepare the new Foil Adhesive Audio Jack.

Carry out the Installation as described below.

Follow the 4.9 Installation instruction.

Follow the 5.4 – 5.7 Reassembly instructions!

REMOVAL

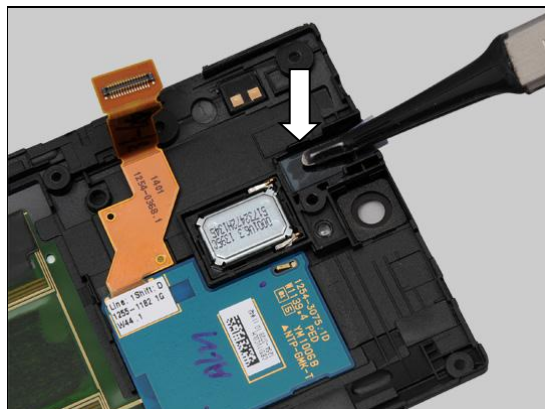
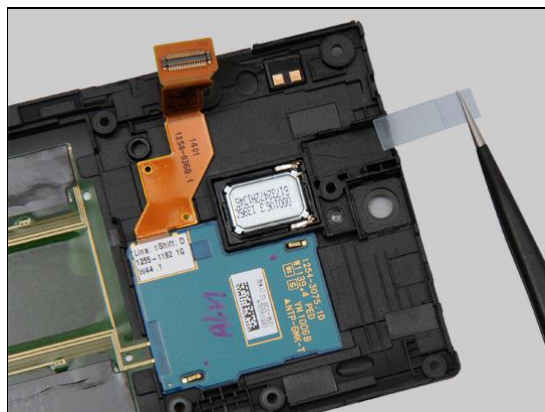
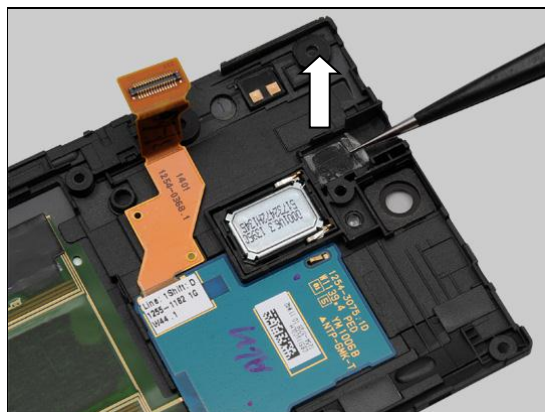
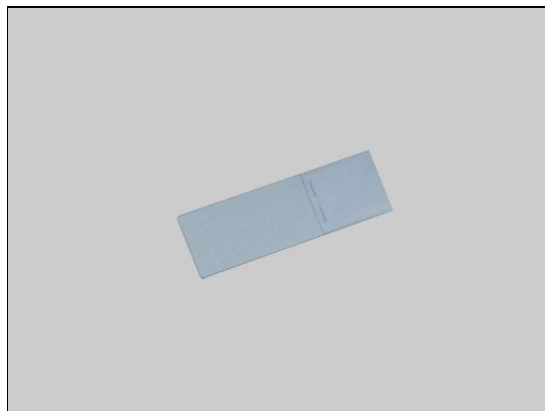
Peel off the Foil Adhesive Audio Jack by using the Tweezers.

Scrap! Not to be reused!

INSTALLATION

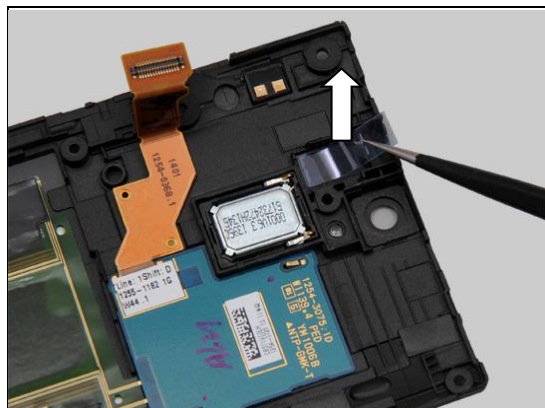
Place the new Foil Adhesive Audio Jack in the correct position.

Press to secure its attachment.



Replacement: Foil Adhesive Audio Jack

Peel off the protective film.



Replacement

4.24 Foil Adhesive GPS Ant

Follow the 3.1 – 3.4 Disassembly instructions!

Follow the 4.8 Removal instruction.

Carry out the Removal as described below.

Prepare the new Foil Adhesive GPS Ant.

Carry out the Installation as described below.

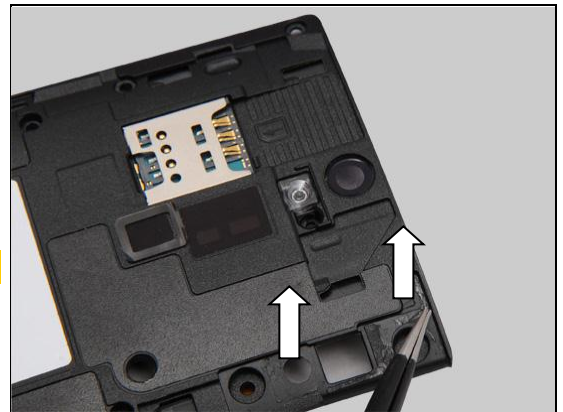
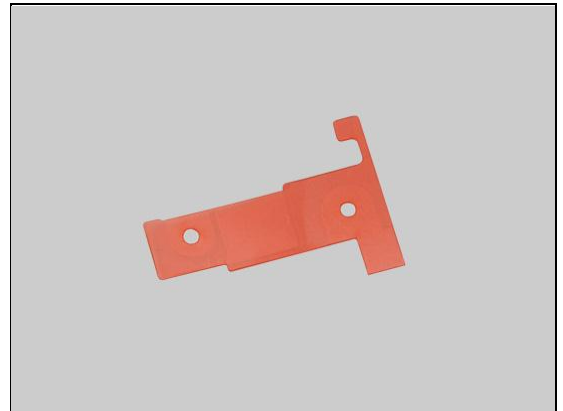
Follow the 4.8 Installation instruction.

Follow the 5.4 – 5.7 Reassembly instructions!

REMOVAL

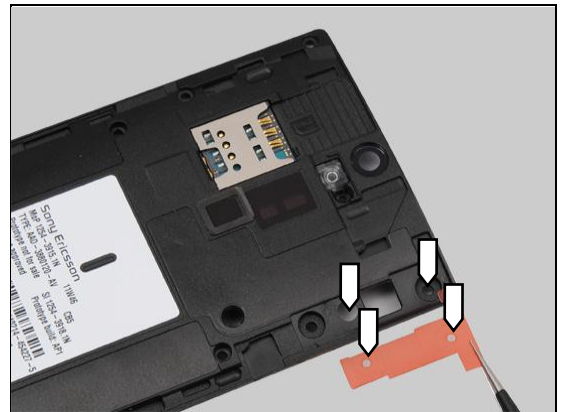
Peel off the Foil Adhesive GPS Ant by using the Tweezers.

Scrap! Not to be reused!

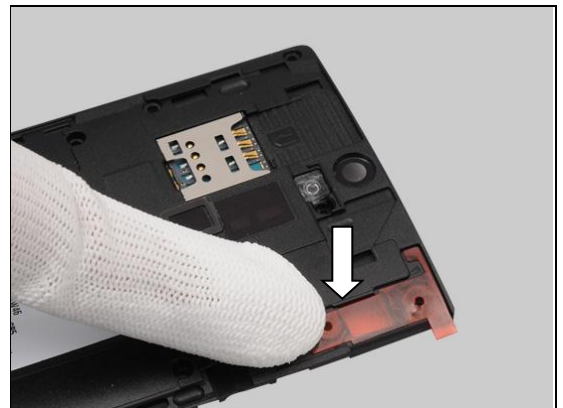


INSTALLATION

Place the new Foil Adhesive GPS Ant in the correct position.



Press to secure its attachment.



Replacement: Foil Adhesive GPS Ant

Peel off the protective film.



Replacement

4.25 Foil Adhesive NFC PBA

Follow the 3.1 – 3.4 Disassembly instructions!

Follow the 4.37 Removal instruction.

Carry out the Removal as described below.

Prepare the new Foil Adhesive NFC PBA.

Carry out the Installation as described below.

Follow the 4.37 Installation instruction.

Follow the 5.4 – 5.7 Reassembly instructions!

REMOVAL

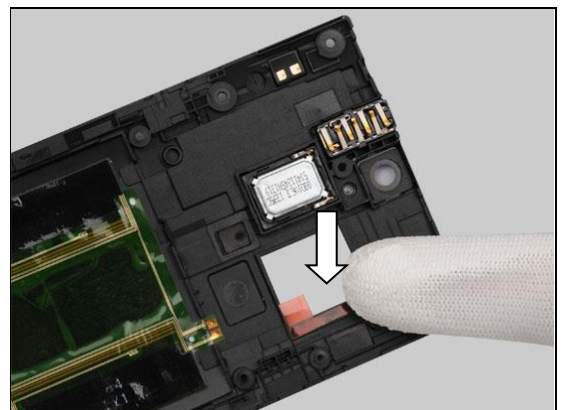
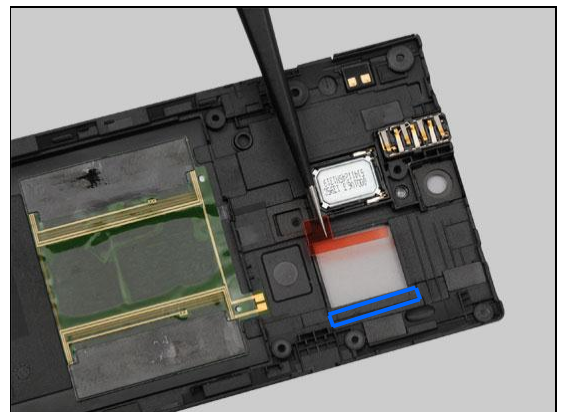
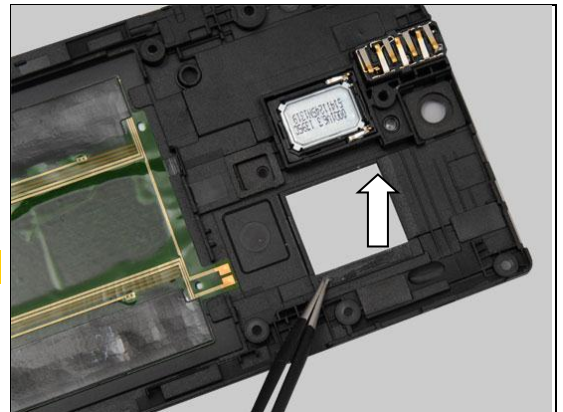
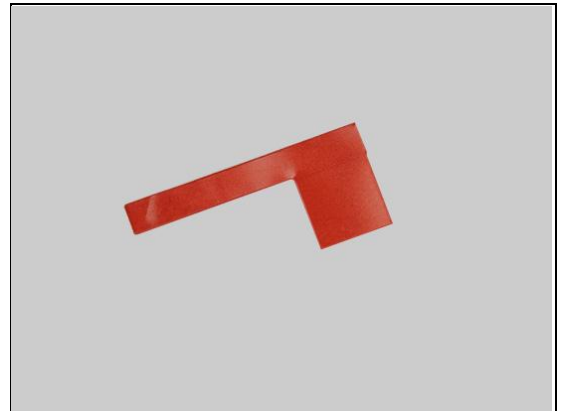
Peel off the Foil Adhesive NFC PBA by using the Tweezers.

Scrap! Not to be reused!

INSTALLATION

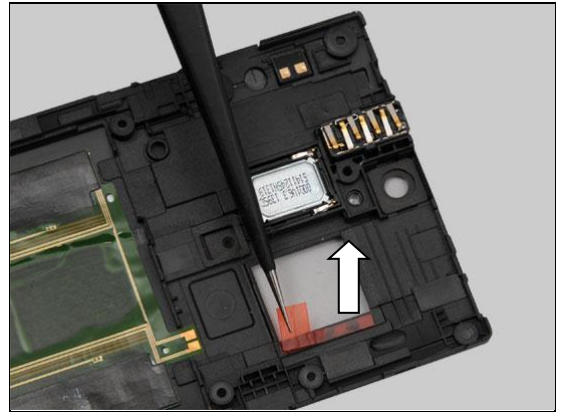
Place the new Foil Adhesive NFC PBA in the correct position as shown in the picture.

Press to secure its attachment.



Replacement: Foil Adhesive NFC PBA

Peel off the protective film.



Replacement

4.26 Foil Adhesive Speaker

Follow the 3.1 – 3.4 Disassembly instructions!

Follow the 4.33 Removal instructions.

Carry out the Removal as described below.

Prepare the new Foil Adhesive Speaker.

Carry out the Installation as described below.

Follow the 4.33 Installation instructions.

Follow the 5.4 – 5.7 Reassembly instructions!

REMOVAL

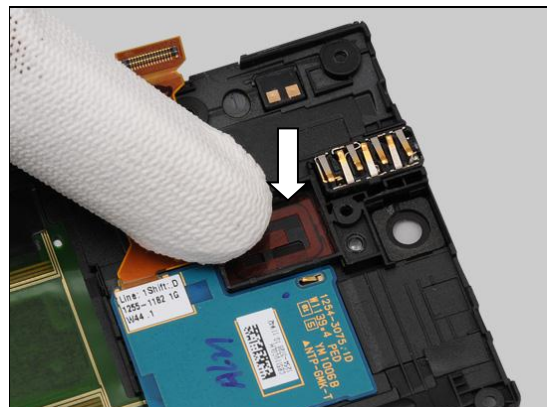
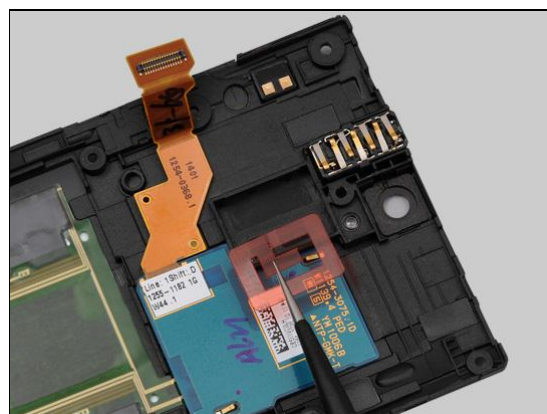
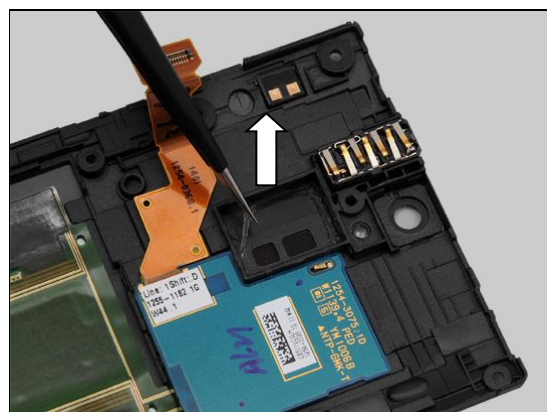
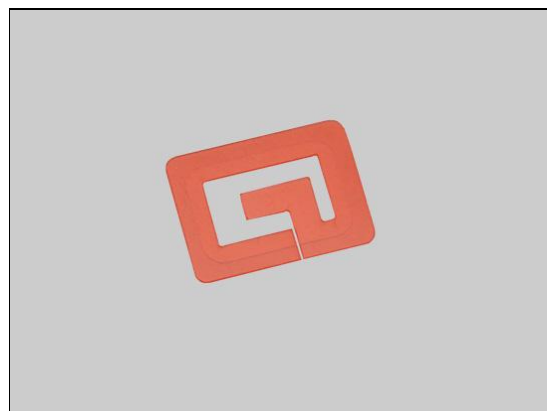
Peel off the Foil Adhesive Speaker by using the Tweezers.

Scrap! Not to be reused!

INSTALLATION

Place the new Foil Adhesive Speaker in the correct position.

Press to secure its attachment.



Replacement: Foil Adhesive Speaker

Peel off the protective film.



Replacement

4.27 Foil Adhesive Transparent Front

Follow the 3.1 – 3.7 Disassembly instructions!

Carry out the Removal as described below.

Prepare the new Foil Adhesive Speaker.

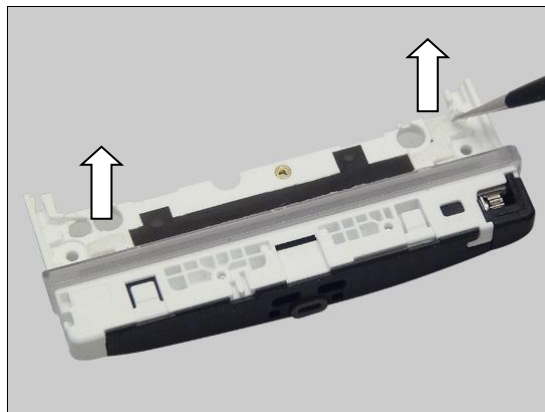
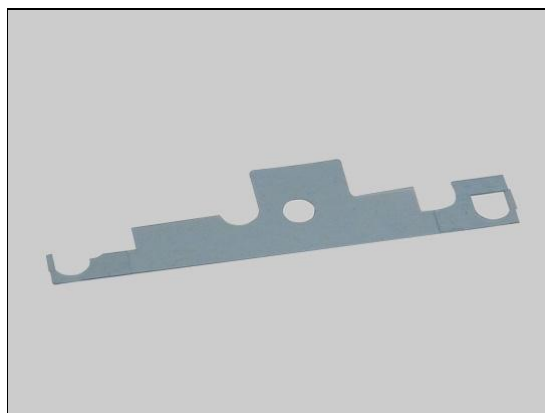
Carry out the Installation as described below.

Follow the 5.1 – 5.7 Reassembly instructions!

REMOVAL

Peel off the Foil Adhesive Transparent Front by using the Tweezers.

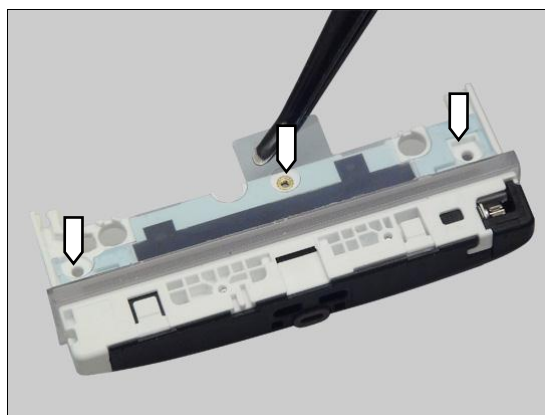
Scrap! Not to be reused!



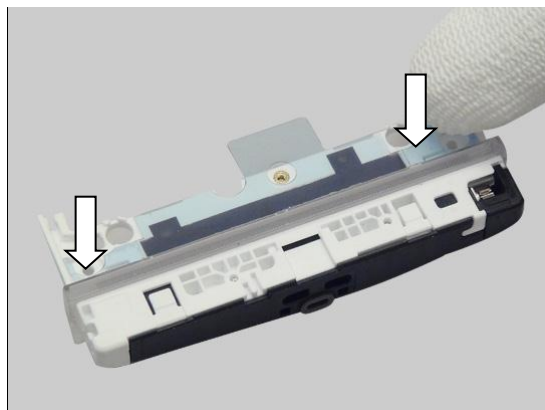
INSTALLATION

Place the new Foil Adhesive Transparent Front in the correct position.

The holes must be aligned between the Foil Adhesive Transparent Front and the Cover Transparent Assy!

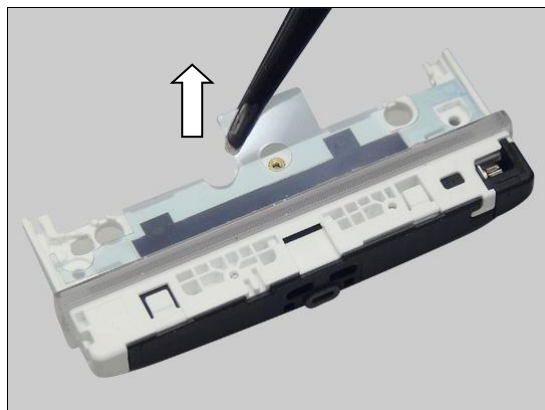


Press to secure its attachment.



Replacement: Foil Adhesive Transparent Front

Peel off the protective film.



Replacement

4.28 FPC Jack Assy

Follow the 3.1 – 3.6 Disassembly instructions!

Carry out the Removal as described below.

Prepare the new FPC Jack Assy.

Carry out the Installation as described below.

Follow the 5.2 – 5.7 Reassembly instructions!

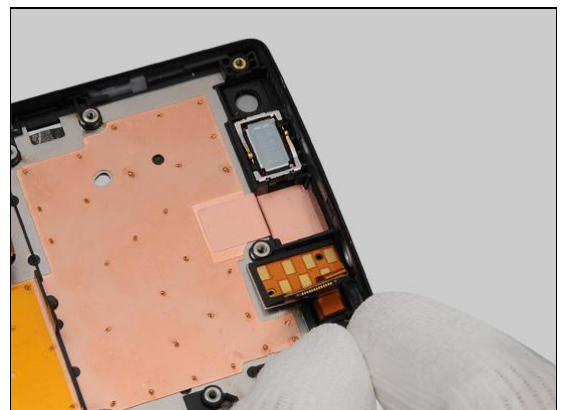
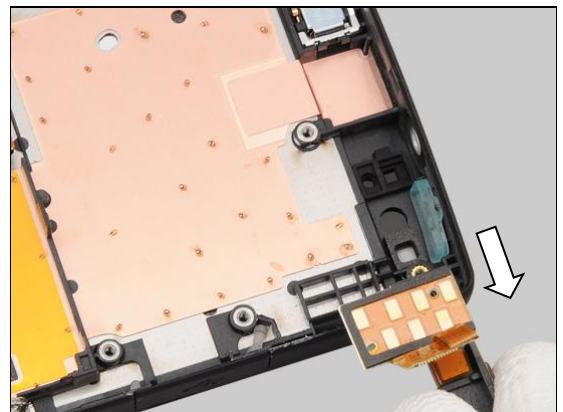
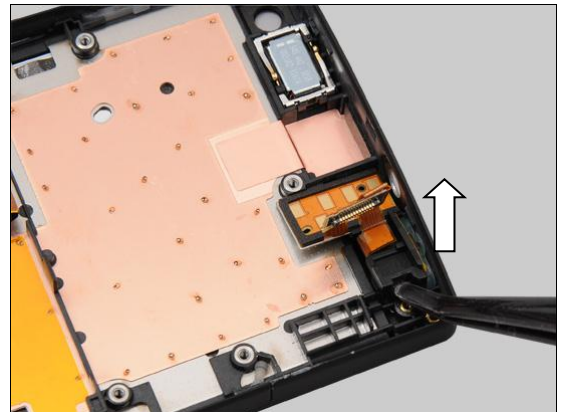
REMOVAL

Insert the Flex Film Assembly Tool underneath and lift up to detach the FPC Jack Assy.

Remove the FPC Jack Assy with your fingers.

INSTALLATION

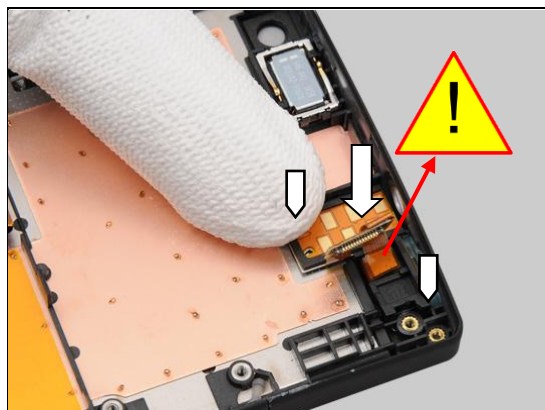
Place the new FPC Jack Assy in the correct position.



Replacement: FPC Jack Assy

Press to secure its position.

Do not touch the FPC area!



Replacement

4.29 FPC Main Assy

Follow the 3.1 – 3.7 Disassembly instructions!
Carry out the Removal as described below.
Prepare the new FPC Main Assy.
Carry out the Installation as described below.
Follow the 4.40 Installation instructions.
Follow the 5.1– 5.7 Reassembly instructions!

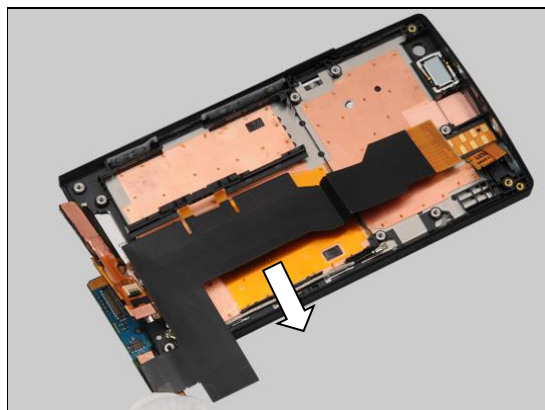
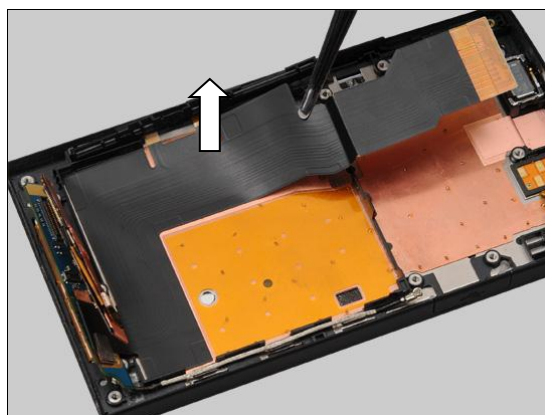
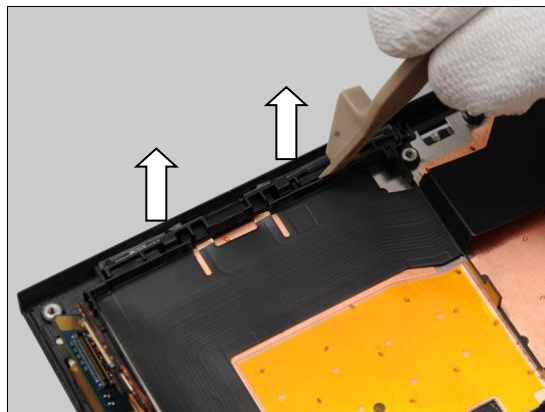
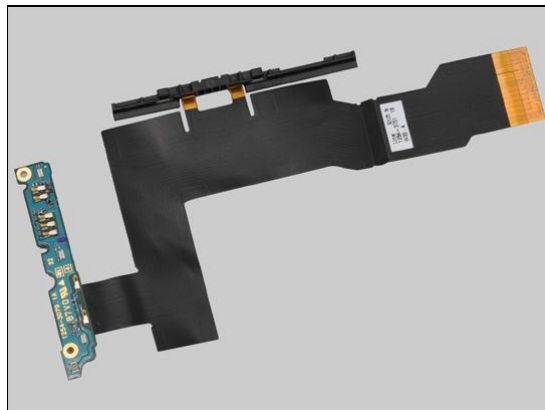
REMOVAL

Insert the Front Opening Tool to detach the key push switch part on the FPC Main Assy.

Detach the FPC Main Assy by using the Flex Film Assembly Tool.

Remove the FPC Main Assy with your fingers.

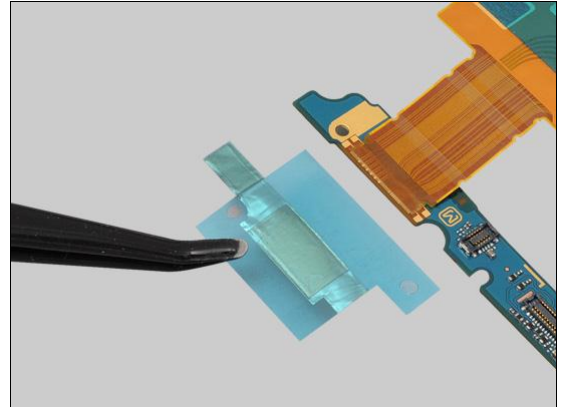
Scrap! Not to be reused!



Replacement: FPC Main Assy

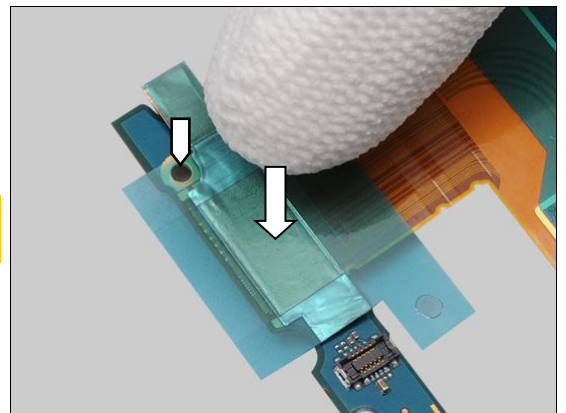
INSTALLATION

Place the new Sheet ACF Relay in the correct position.

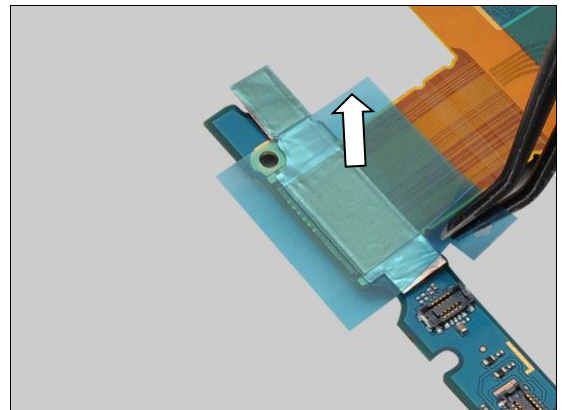


Press to secure its attachment.

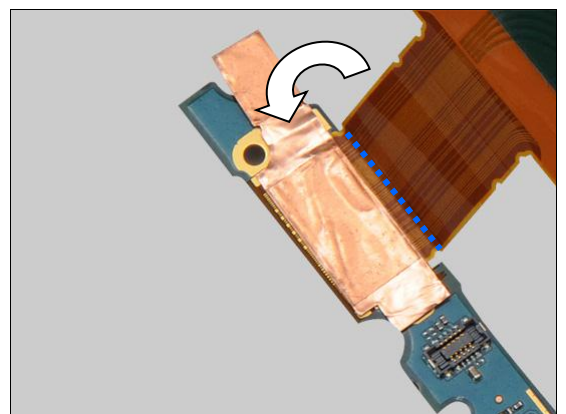
The guiding hole must be aligned accurately between the Sheet ACF Relay and the PBA of the FPC Main Assy!



Peel off the protective film.

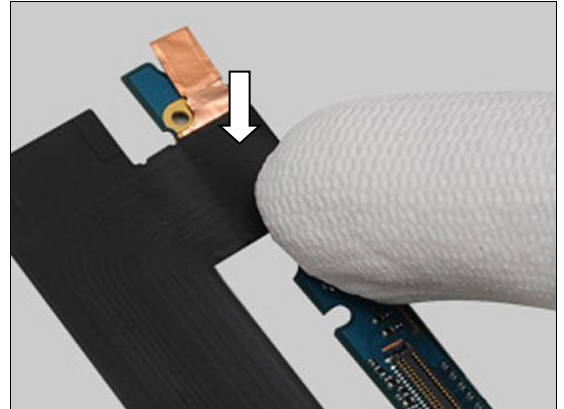


Pre-bend the FPC Main by the Guide line as shown in the picture.

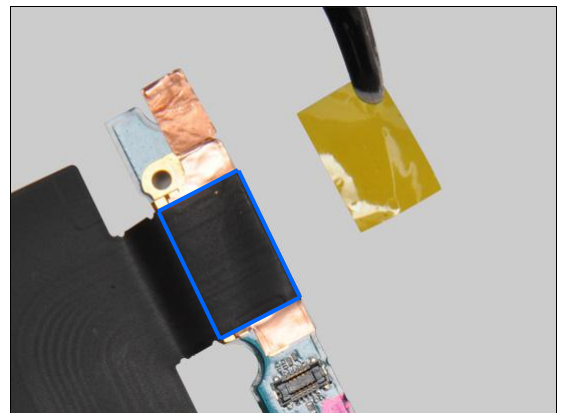


Replacement: FPC Main Assy

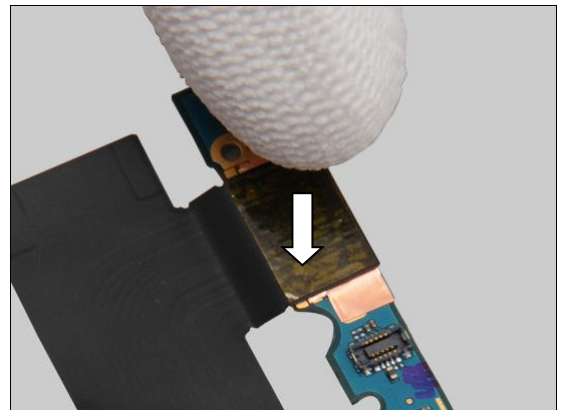
Press to secure its attachment.



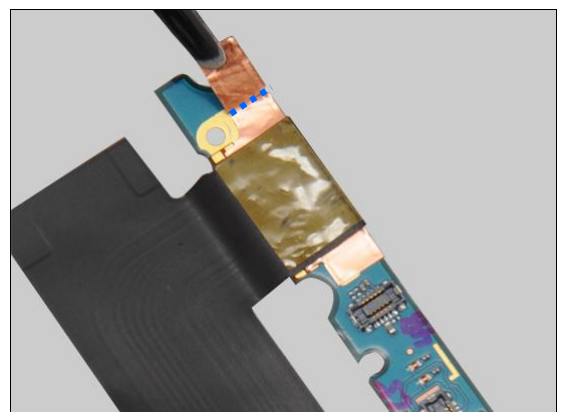
Place the new Sheet Relay FPC in the correct position



Press to secure its attachment.

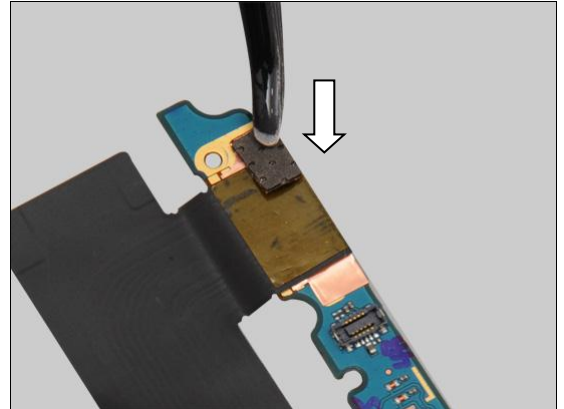


Pre-bend the Sheet ACF Relay by the Guide line as shown in the picture.

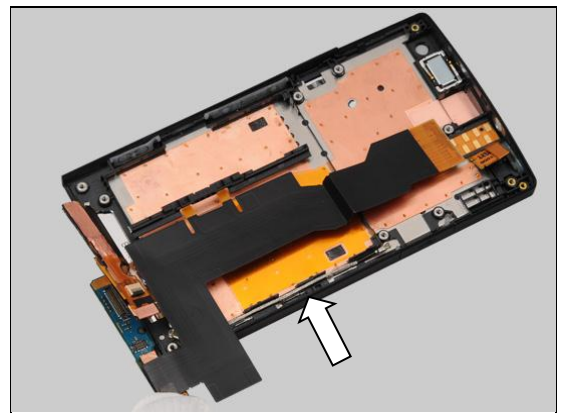


Replacement: FPC Main Assy

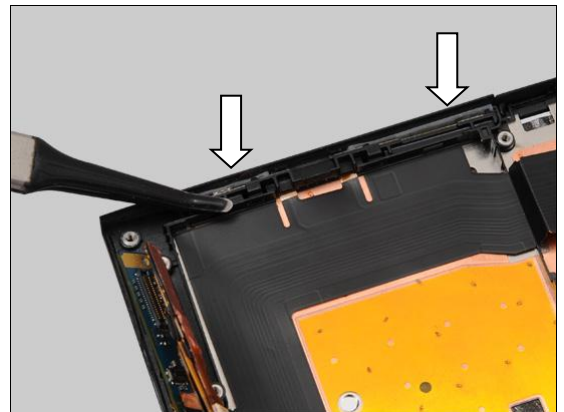
Press the Sheet ACF Relay to secure its attachment.



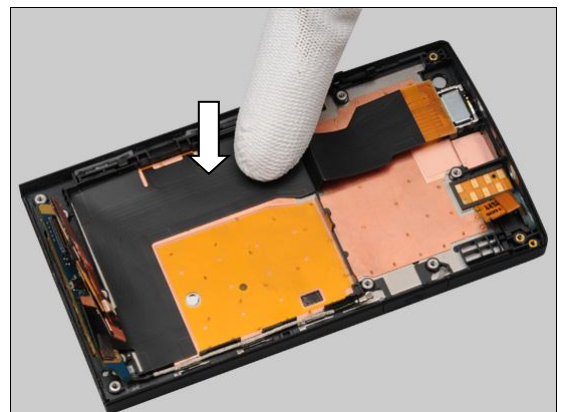
Secure the FPC Main Assy in the correct position, by sliding it under LCD FPC slot as shown in picture!



Press to secure key push switch part position by using the Flex Film Assembly Tool.



Press along to secure the FPC Main attachment.



Replacement

4.30 Key Camera

Follow the 3.1 – 3.7 Disassembly instructions!

Follow the 4.29 Removal instructions!

Carry out the Removal as described below.

Prepare the new Key Camera.

Carry out the Installation as described below.

Follow the 4.29 Installation instructions!

Follow the 5.1 – 5.7 Reassembly instructions!

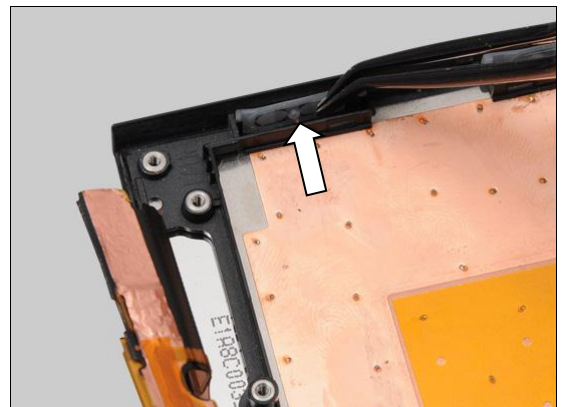
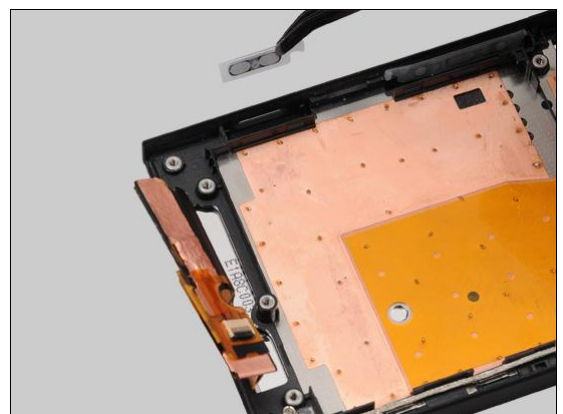
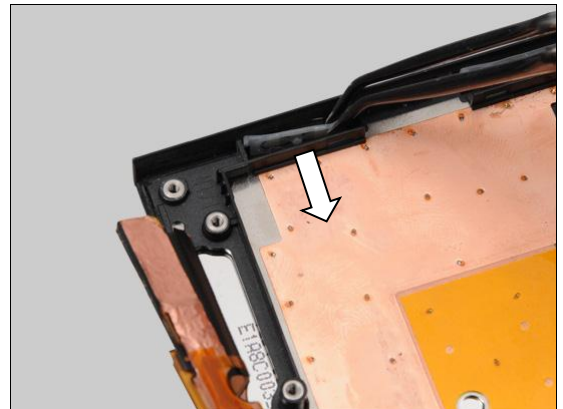
REMOVAL

Detach the Key Camera by using the Flex Film Assembly Tool and remove it.

INSTALLATION

Place the new Key Camera with proper direction into the slot.

Press to secure its position.



Replacement

4.31 Key On/Off

Follow the 3.1 – 3.6 Disassembly instructions!

Follow the 4.28 Removal instructions!

Carry out the Removal as described below.

Prepare the new Key On/Off.

Carry out the Installation as described below.

Follow the 4.28 Installation instructions!

Follow the 5.2 – 5.7 Reassembly instructions!

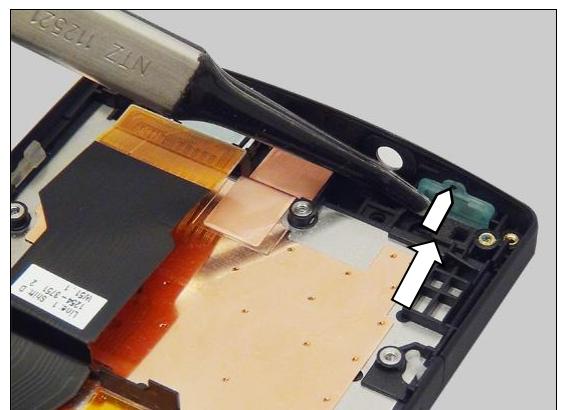
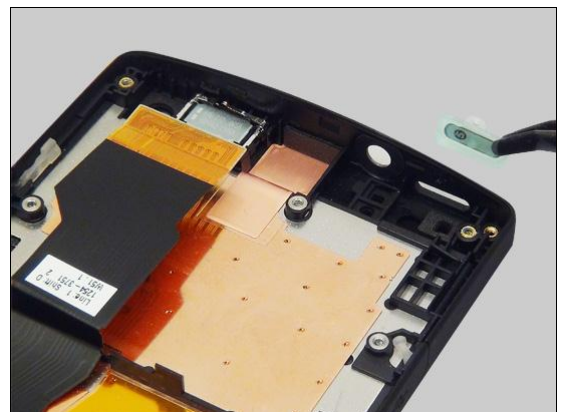
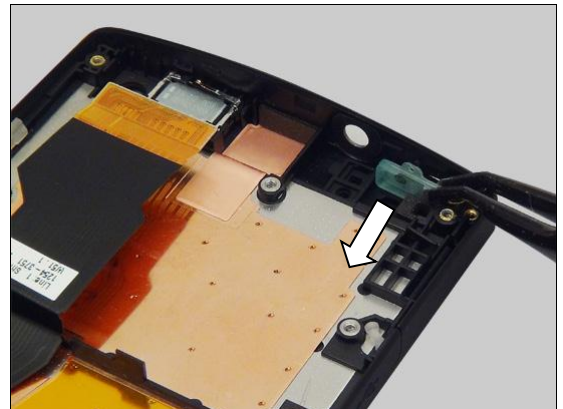
REMOVAL

Detach the Key On/Off by using the Flex Film Assembly Tool and remove it.

INSTALLATION

Place the new Key On/Off with proper direction into the slot.

Press to secure its position.



Replacement

4.32 Key Volume

Follow the 3.1 – 3.7 Disassembly instructions!

Follow the 4.29 Removal instructions!

Carry out the Removal as described below.

Prepare the new Key Volume.

Carry out the Installation as described below.

Follow the 4.29 Installation instructions!

Follow the 5.1 – 5.7 Reassembly instructions!

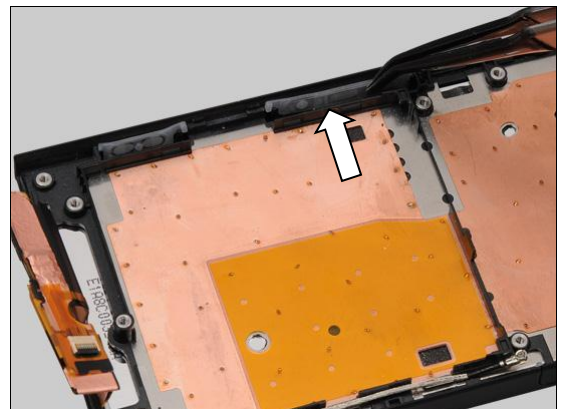
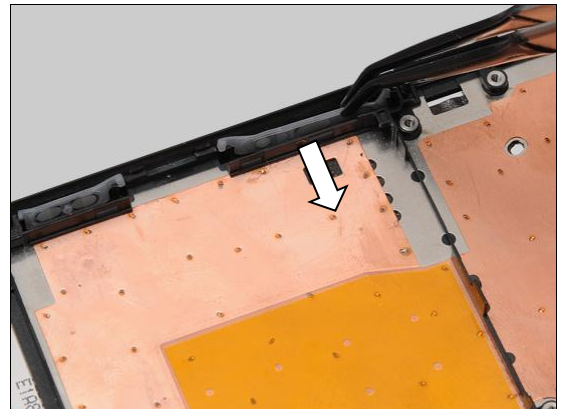
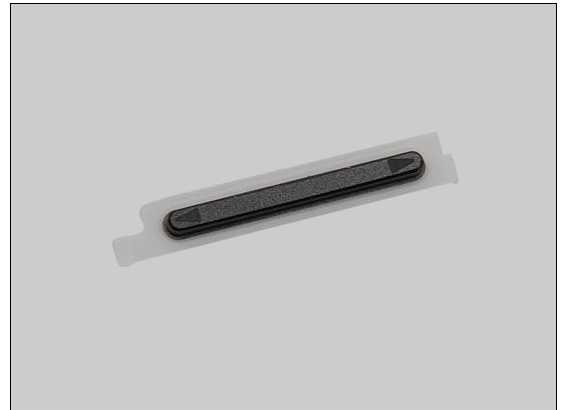
REMOVAL

Detach the Key Volume by using the Flex Film Assembly Tool and remove it.

INSTALLATION

Place the new Key Volume with proper direction into the slot.

Press to secure its position.



Replacement

4.33 Loudspeaker

Follow the 3.1 – 3.4 Disassembly instructions!

Follow the 4.26 Removal instructions!

Carry out the Removal as described below.

Prepare the new Loudspeaker.

Carry out the Installation as described below.

Follow the 4.26 Installation instructions!

Follow the 5.4 – 5.7 Reassembly instructions!

REMOVAL

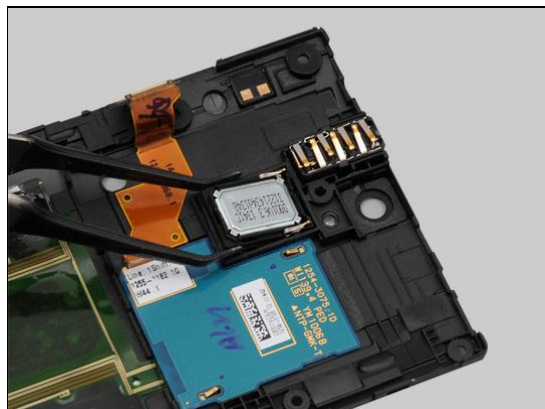
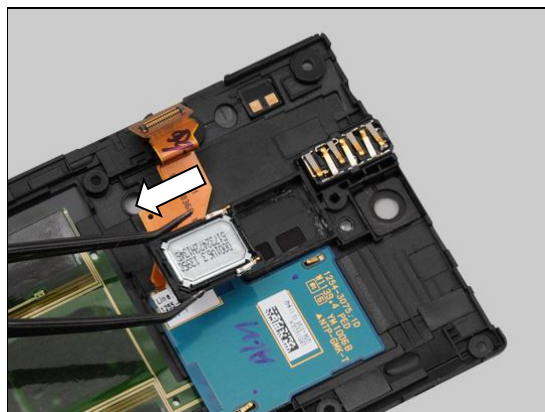
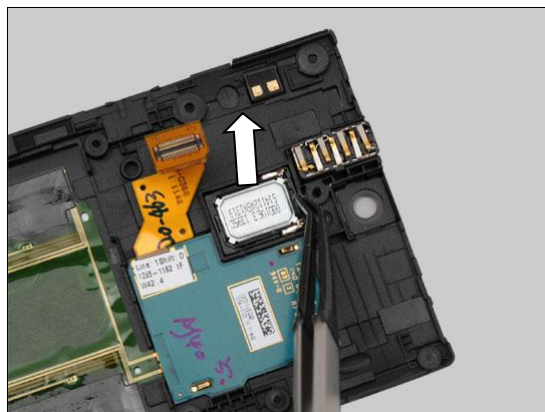
Insert the Flex Film Assembly Tool underneath and lift up to detach the Loudspeaker.

Scrap! Not to be reused!

Remove it by using the Flex Film Assembly Tool.

INSTALLATION

Clean the remained adhesive and place the new Loudspeaker into its socket.



Replacement: Loudspeaker

Press along the surface to secure its attachment.



Replacement

4.34 Main Antenna

Follow the 3.1 – 3.4 Disassembly instructions!

Carry out the Removal as described below.

Prepare the new Main Antenna.

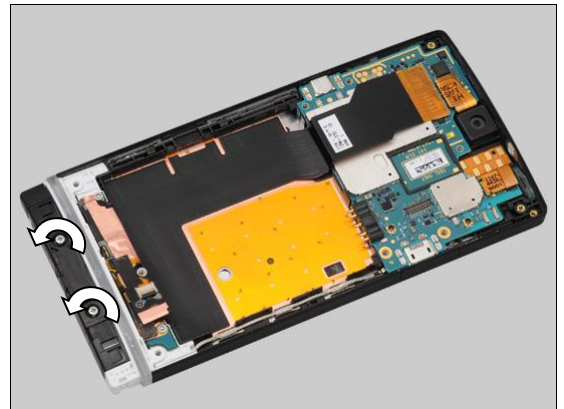
Carry out the Installation as described below.

Follow the 5.4 – 5.7 Reassembly instructions!



REMOVAL

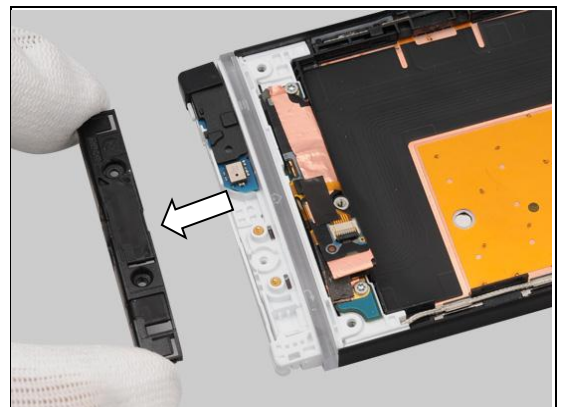
Remove the two screws Len:6.0 Diam:1.4M by Bits(JCIS No 0).



Insert the Guitar Pick to release the hooks of the Main Antenna.



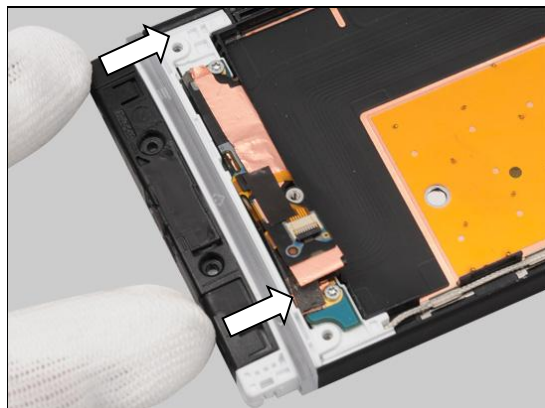
Remove the Main Antenna.



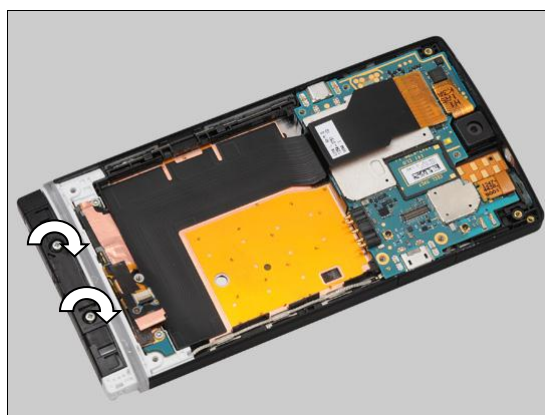
Replacement: Main Antenna

INSTALLATION

Place the Main Antenna in the correct position and push to lock the hooks of the Main Antenna.



Apply 10 Ncm torque when tightening the two Screw Len:6.0
Diam:1.4 with Bits (JCIS No 0).



Replacement

4.35 NFC Antenna

Follow the 3.1 – 3.4 Disassembly instructions!

Follow the 4.37 Removal instructions!

Carry out the Removal as described below.

Prepare the new NFC Antenna.

Carry out the Installation as described below.

Follow the 4.37 Installation instructions!

Follow the 5.4 – 5.7 Reassembly instructions!

REMOVAL

Peel off the NFC Antenna by using the Flex Film Assembly Tool.

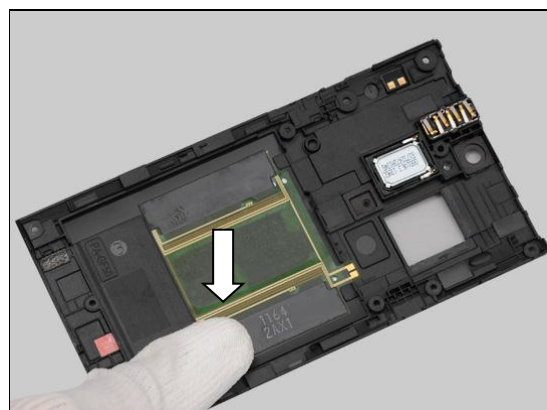
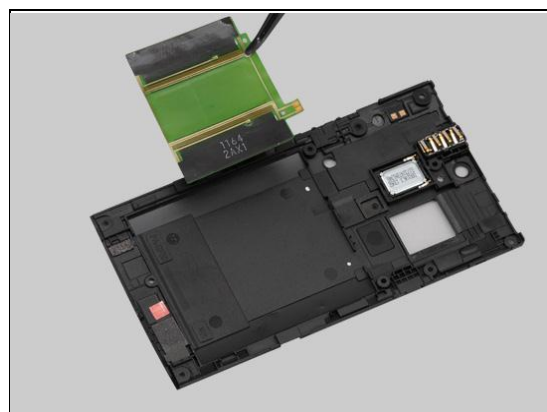
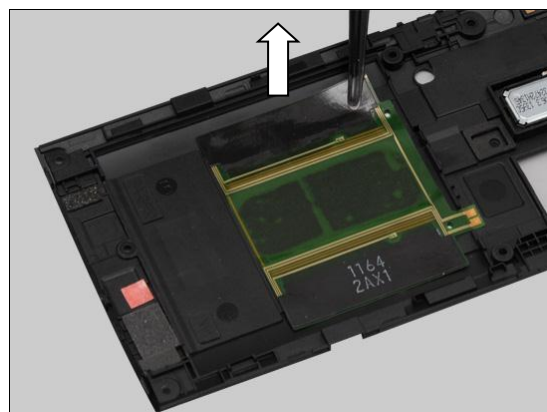
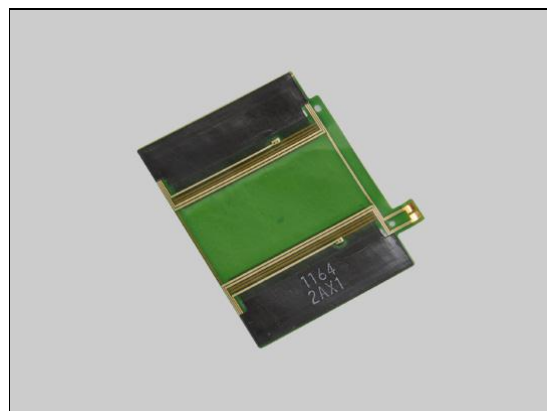
Scrap! Not to be reused!

INSTALLATION

Place the NFC Antenna in the correct position.

Pick up the new NFC Antenna with the upper green part as shown in the picture!

Press to secure its attachment.



Replacement

4.36 PBA Bottom

Follow the 3.1 – 3.4 Disassembly instructions!
Follow the 4.34, 4.13, 4.15 Removal instructions!
Carry out the Removal as described below.
Prepare the new PBA Bottom.
Carry out the Installation as described below.
Follow the 4.34, 4.13, 4.15, 4.21 Installation instructions!
Follow the 5.4 – 5.7 Reassembly instructions!

REMOVAL

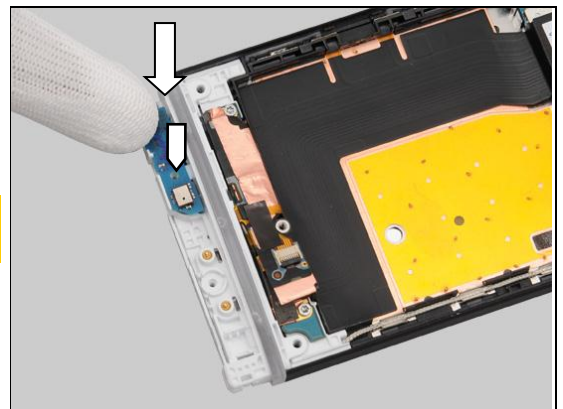
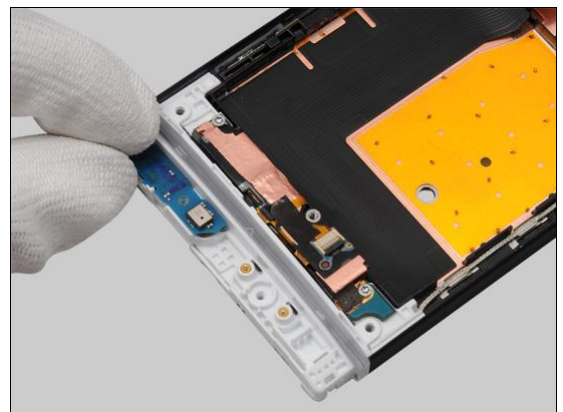
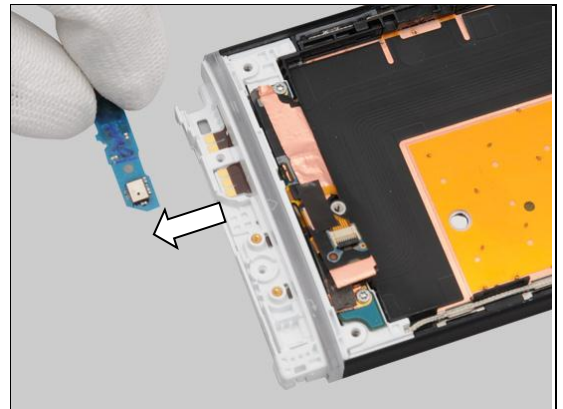
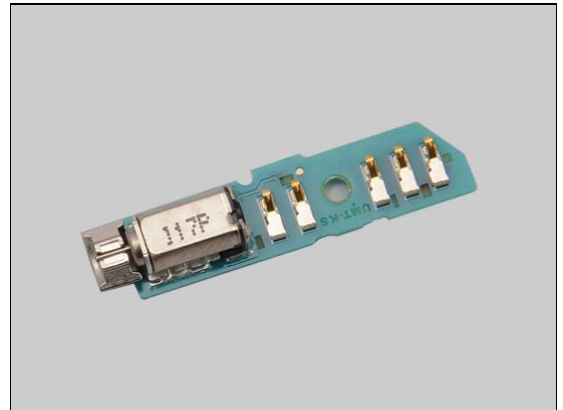
Remove the PBA Bottom with your fingers.

INSTALLATION

Place the PBA Bottom in the correct position.

Press to secure its position.

The guiding hole must be aligned accurately between the PBA Bottom and the Cover Transparent Assy!



Replacement

4.37 PBA NFC

Follow the 3.1 – 3.4 Disassembly instructions!

Follow 4.25 Removal Instructions!

Carry out the Removal as described below.

Prepare the new PBA NFC.

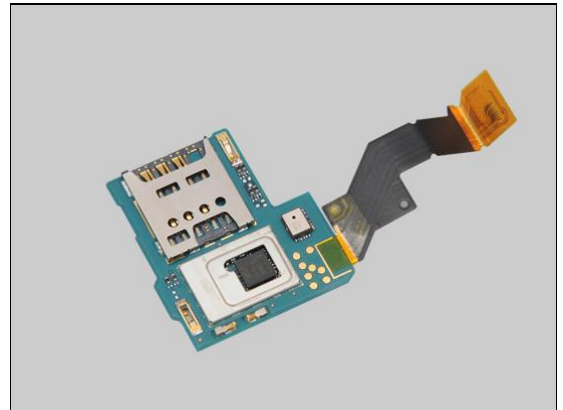
Follow the 4.41, 4.42, 4.25 Installation instructions

Carry out the Installation as described below.

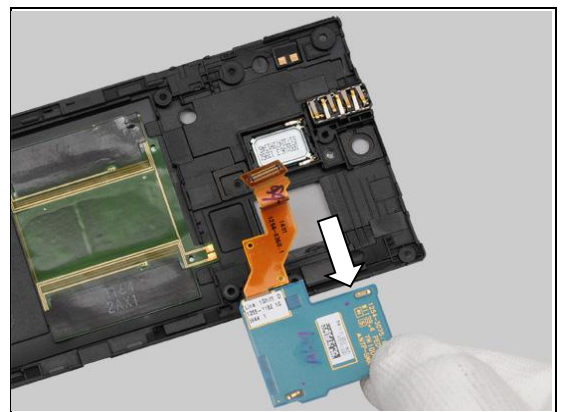
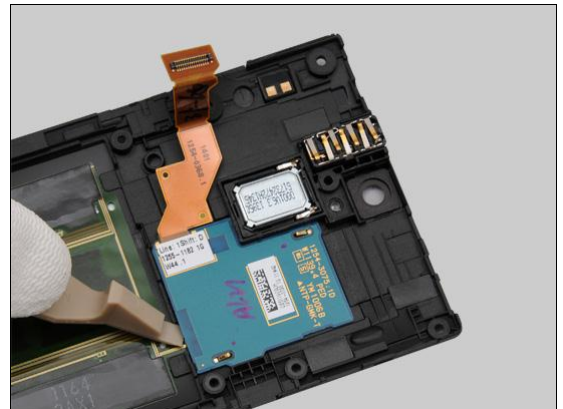
Follow the 5.4 – 5.7 Reassembly instructions!

REMOVAL

Insert the Front Opening Tool to detach the PBA NFC.

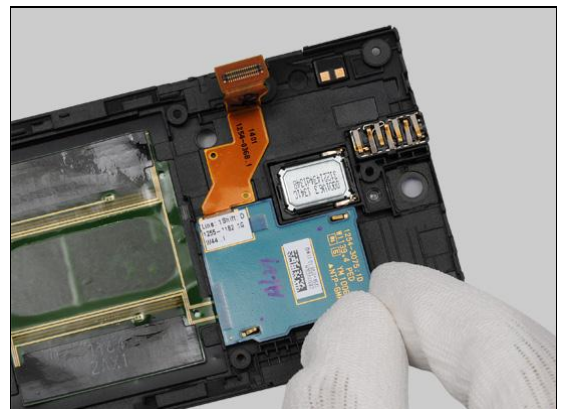


Remove the PBA NFC with your fingers.



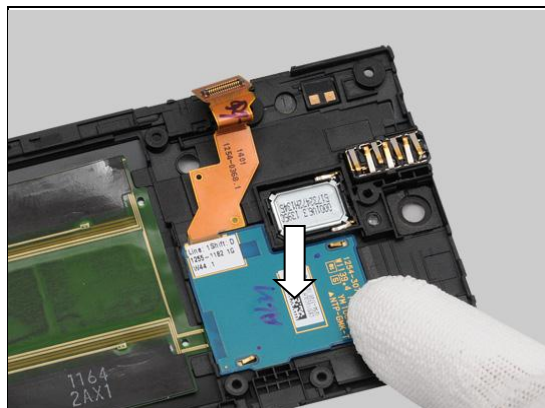
INSTALLATION

Place the PBA NFC in the correct position.



Replacement: PBA NFC

Press to secure its position.



Replacement

4.38 RF Cable

Follow the 3.1 – 3.7 Disassembly instructions!

Carry out the Removal as described below.

Prepare the new RF Cable

Carry out the Installation as described below.

Follow the 5.1 – 5.7 Reassembly instructions!

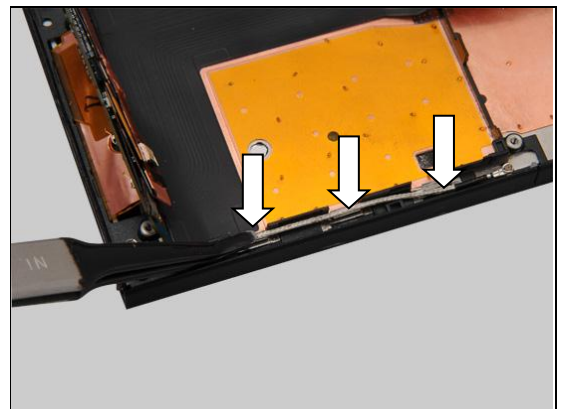
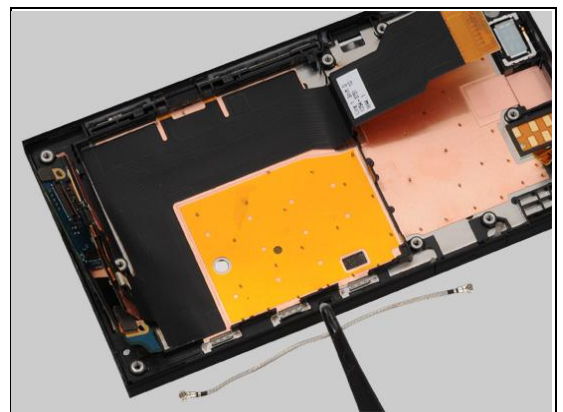
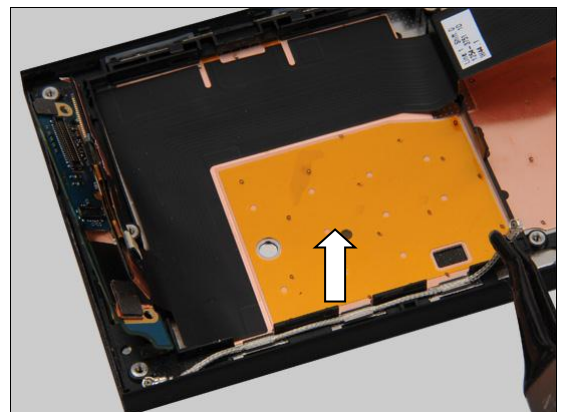
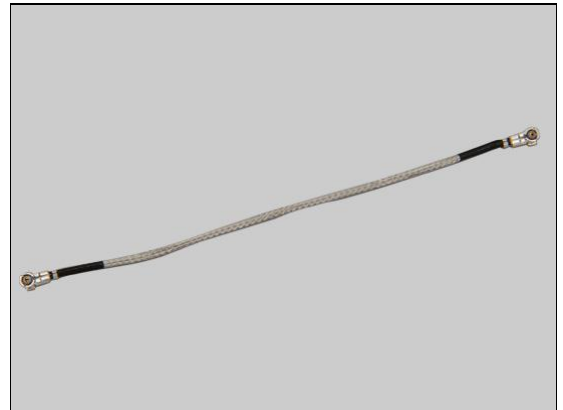
REMOVAL

Release the RF Cable hooks by using the Flex Film Assemble Tool.

INSTALLATION

Place the RF Cable into its socket.

Press to snap the hooks of the RF Cable by using the Flex Film Assemble Tool.



Replacement

4.39 Sheet GPS Ant

Follow the 3.1 Disassembly instructions!

Carry out the Removal as described below.

Prepare the new Sheet GPS Ant

Carry out the Installation as described below.

Follow the 5.7 Reassembly instructions!

REMOVAL

Peel off the Sheet GPS Ant by using the Flex Film Assembly Tool.

Scrap! Not to be reused!

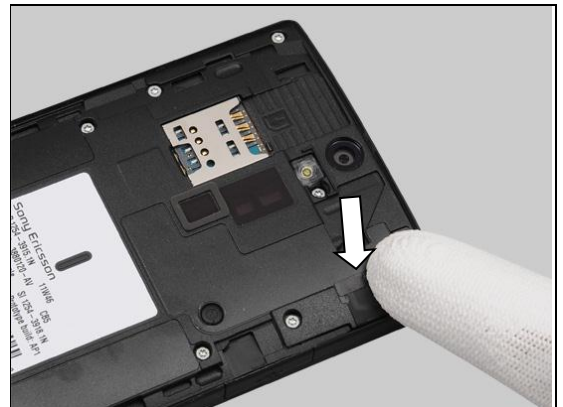


INSTALLATION

Place the Sheet GPS Ant in the correct position.



Press to secure its attachment.



Replacement

4.40 Sheet LCD FPC

Follow the 3.1 – 3.4 Disassembly instructions!

Carry out the Removal as described below.

Prepare the new Sheet LCD FPC.

Carry out the Installation as described below.

Follow the 5.4 – 5.7 Reassembly instructions!

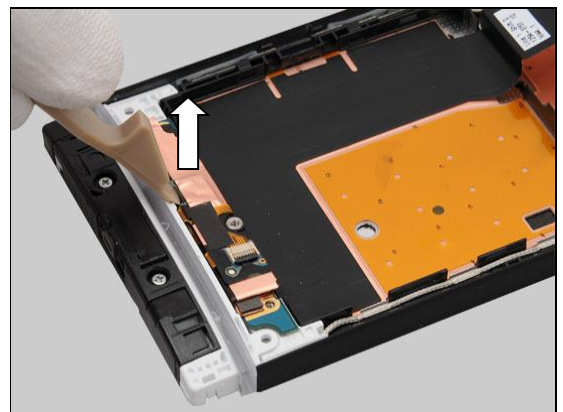
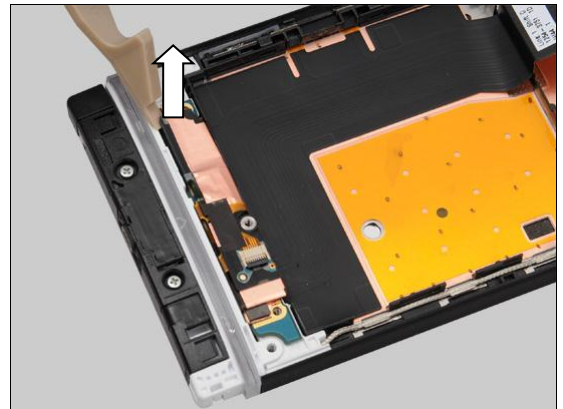
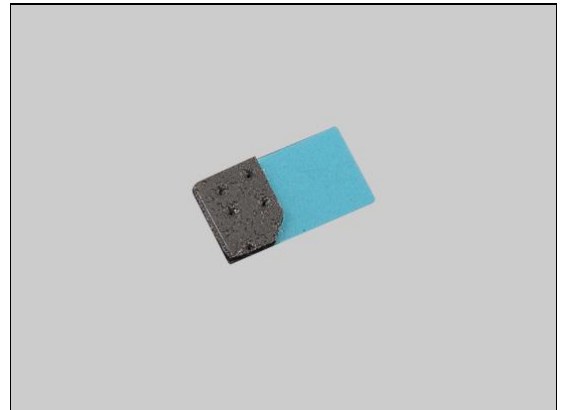
REMOVAL

Unsnap the LCD BtB connectors by using the Front Opening Tool.

Unsnap the touch panel BtB connectors by using the Front Opening Tool.

Peel off the Sheet LCD FPC by using the Tweezers.

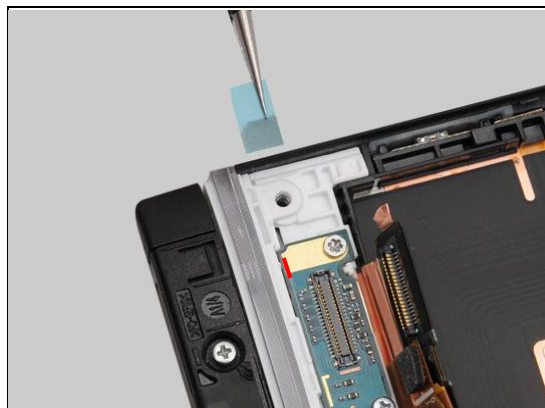
Scrap! Not to be reused!



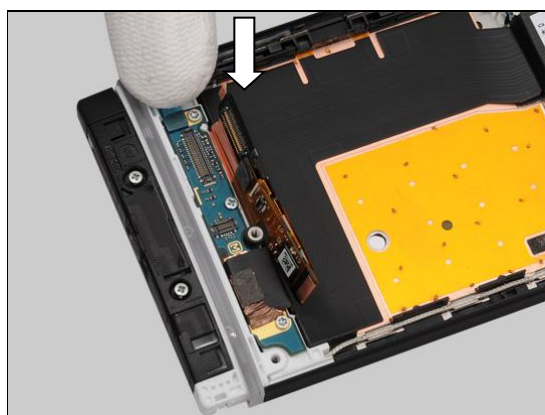
Replacement: Sheet LCD FPC

INSTALLATION

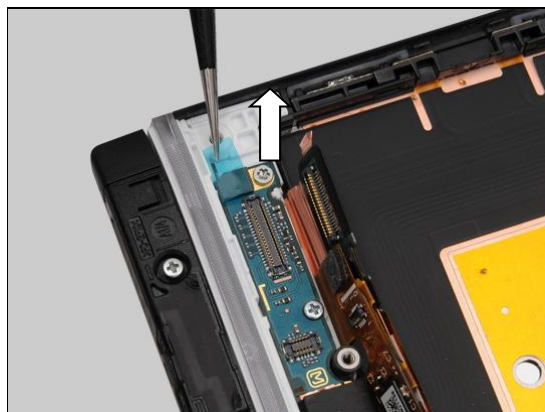
Place the new Sheet LCD FPC aligning the guiding line as shown in the picture.



Press to secure its attachment.



Peel off the protective film.



Replacement

4.41 Sheet NFC FPC

Follow the 3.1 – 3.4 Disassembly instructions!

Follow the 4.37 Removal instructions!

Carry out the Removal as described below.

Prepare the new Sheet NFC FPC.

Carry out the Installation as described below.

Follow the 4.37 Installation instructions!

Follow the 5.4 – 5.7 Reassembly instructions!

REMOVAL

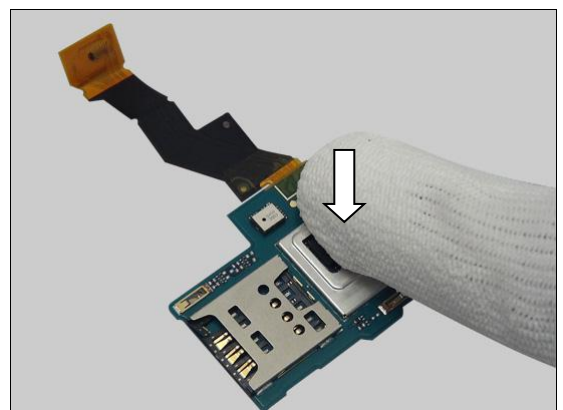
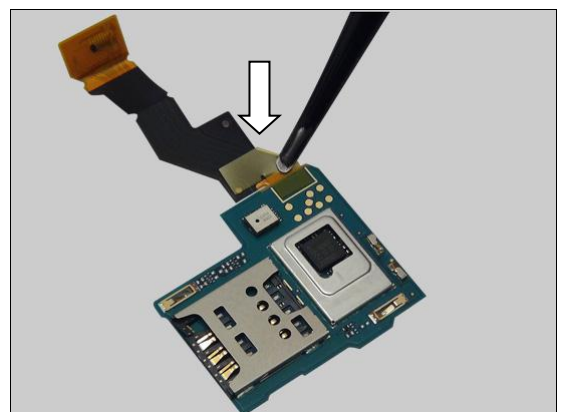
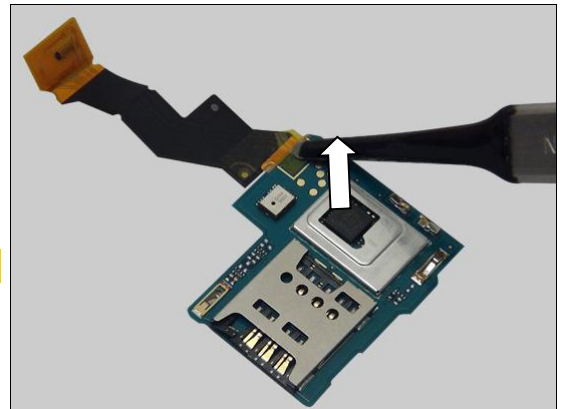
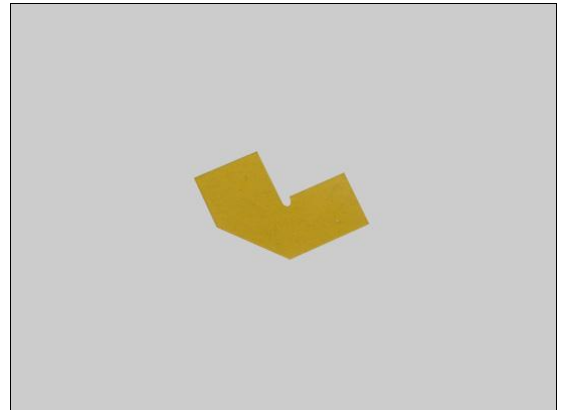
Peel off the Sheet NFC FPC by using the Tweezers.

Scrap! Not to be reused!

INSTALLATION

Place the new Sheet NFC FPC in the correct position.

Press to secure its attachment.



Replacement

4.42 Sheet NFC Shield

Follow the 3.1 – 3.4 Disassembly instructions!

Follow the 4.37 Removal instructions!

Carry out the Removal as described below.

Prepare the new Sheet NFC Shield.

Carry out the Installation as described below.

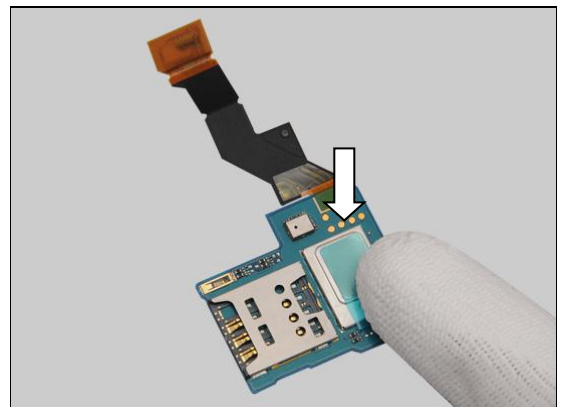
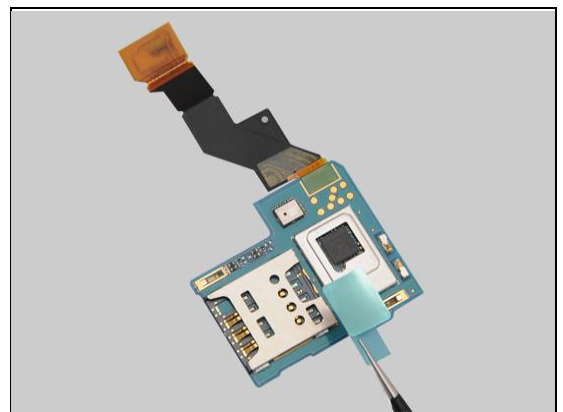
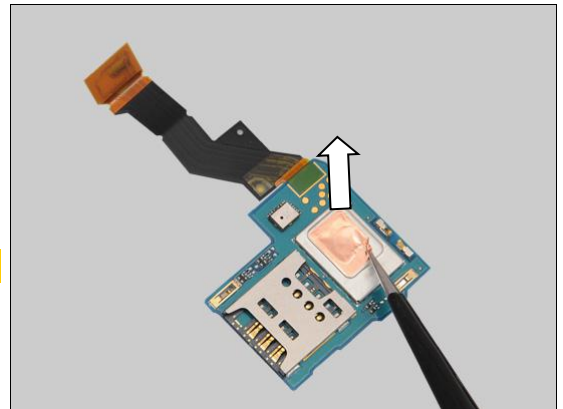
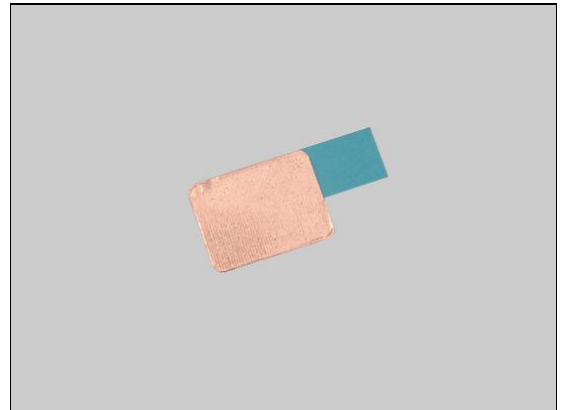
Follow the 4.37 Installation instructions!

Follow the 5.4 – 5.7 Reassembly instructions!

REMOVAL

Peel off the Sheet NFC Shield by using the Tweezers.

Scrap! Not to be reused!



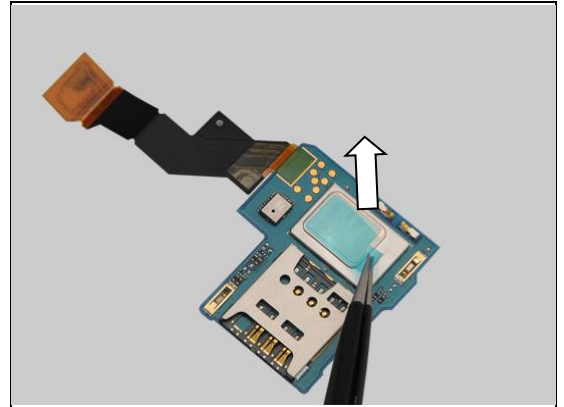
INSTALLATION

Place the new Sheet NFC Shield in the correct position.

Press to secure its attachment.

Replacement: Sheet NFC Shield

Peel off the protective film.



Replacement

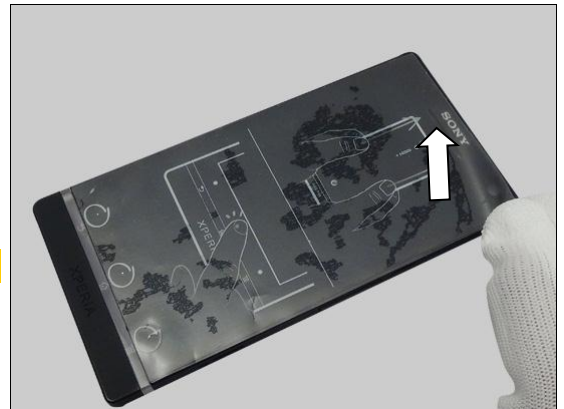
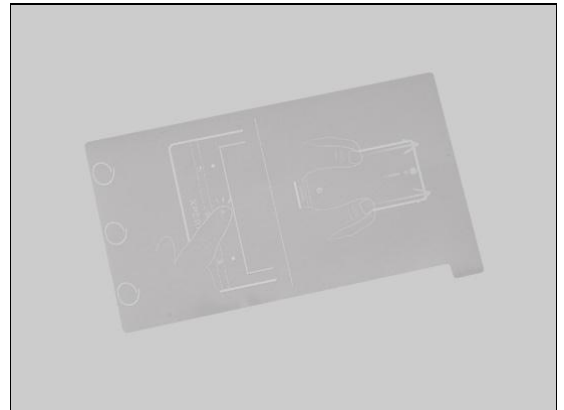
4.43 Sheet Protection LCD

Carry out the Removal as described below.
Prepare the new Sheet Protection LCD.
Carry out the Installation as described below.

REMOVAL

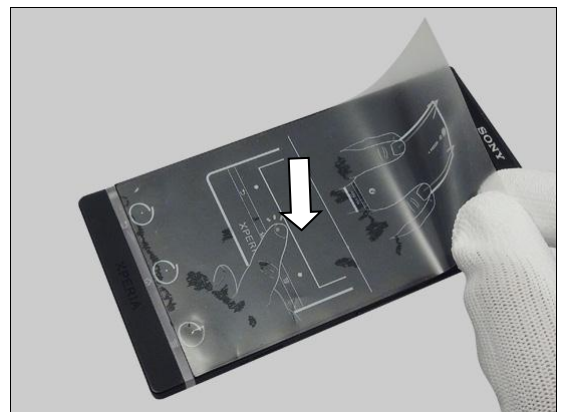
Peel off the Sheet Protection LCD with your fingers.

Scrap! Not to be reused!

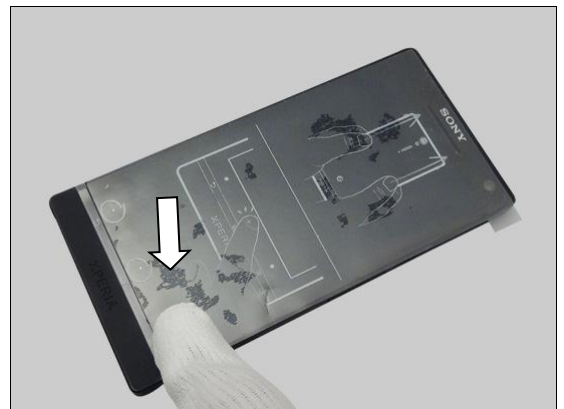


INSTALLATION

Place the Sheet Protection LCD in the correct position.



Press to secure its attachment.



Replacement

4.44 Shield Can BB A

Follow the 3.1 – 3.6 Disassembly instructions!

Carry out the Removal as described below.

Prepare the new Shield Can BB A.

Carry out the Installation as described below.

Follow the 5.2 – 5.7 Reassembly instructions!

REMOVAL

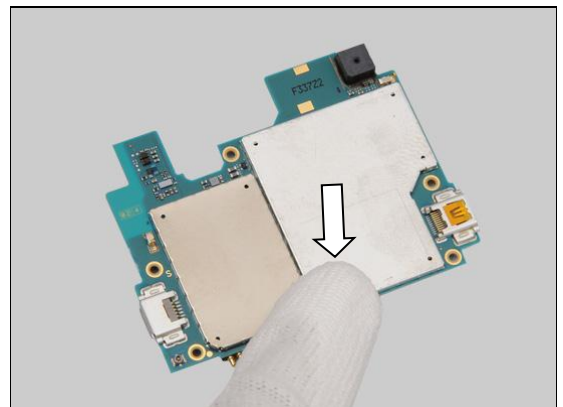
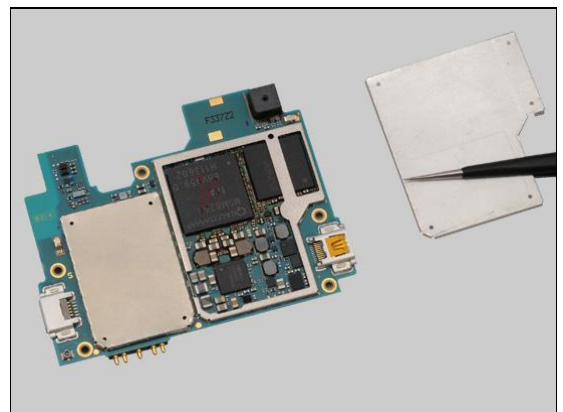
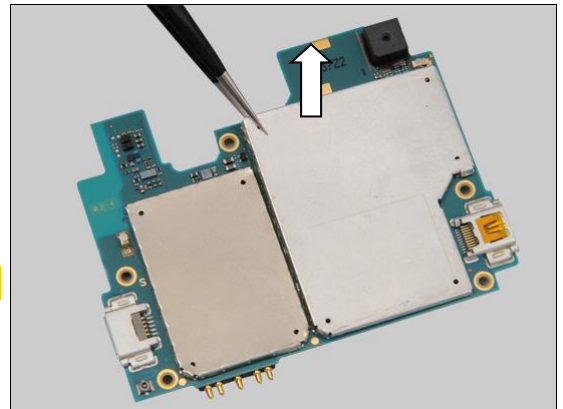
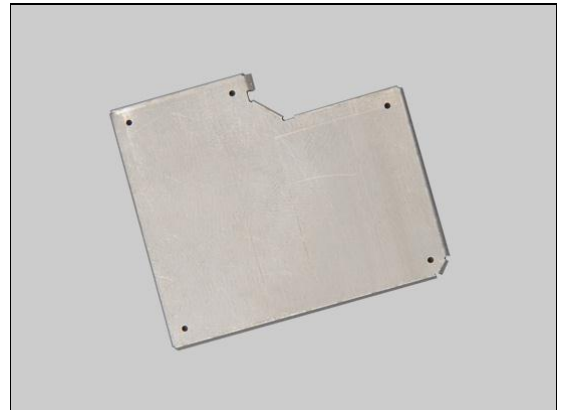
Insert the Tweezers into the corners of the Shield Can BB A and pull upwards to release it.

Scrap! Not to be reused!

Remove the Shield Can BB A.

INSTALLATION

Place the new Shield Can BB A and press gently until it is securely attached.



Replacement

4.45 Shield Can BB B

Follow the 3.1 – 3.6 Disassembly instructions!

Carry out the Removal as described below.

Prepare the new Shield Can BB B.

Carry out the Installation as described below.

Follow the 5.2 – 5.7 Reassembly instructions!

REMOVAL

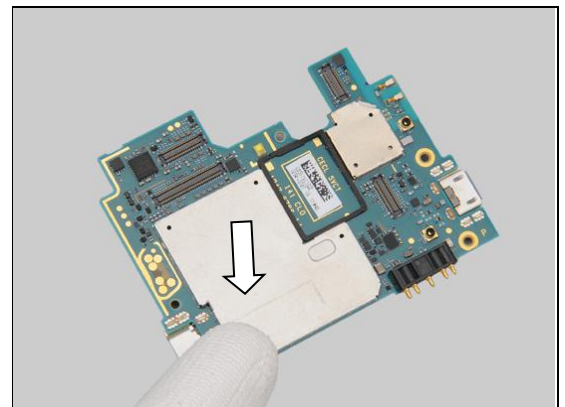
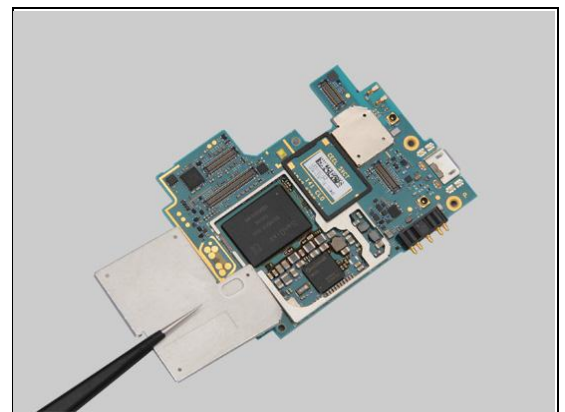
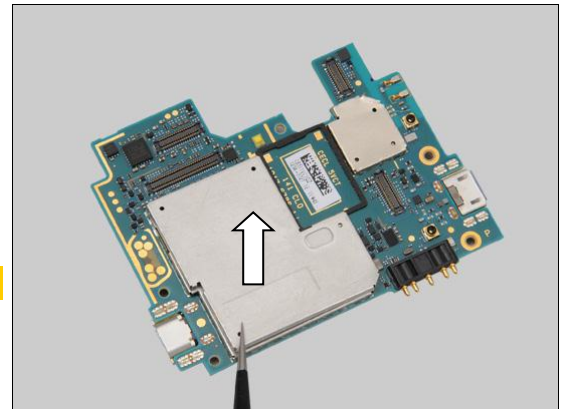
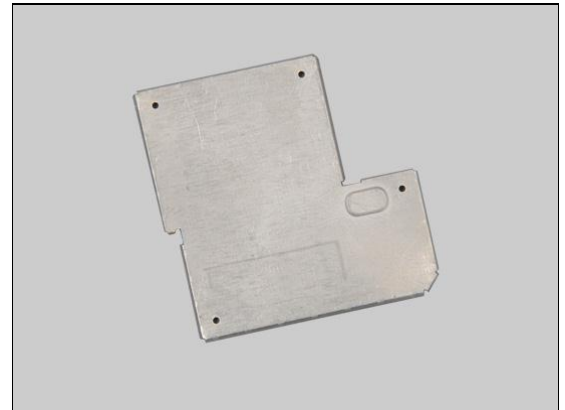
Insert the tweezers into the corners of the Shield Can BB B and pull upwards to release it.

Scrap! Not to be reused!

Remove the Shield Can BB B.

INSTALLATION

Place the new Shield Can BB B and press gently until it is securely attached.



Replacement

4.46 Shield Can Lid Non Cell

Follow the 3.1 – 3.6 Disassembly instructions!
Carry out the Removal as described below.
Prepare the new Shield Can Lid Non Cell.
Carry out the Installation as described below.
Follow the 5.2 – 5.7 Reassembly instructions!

REMOVAL

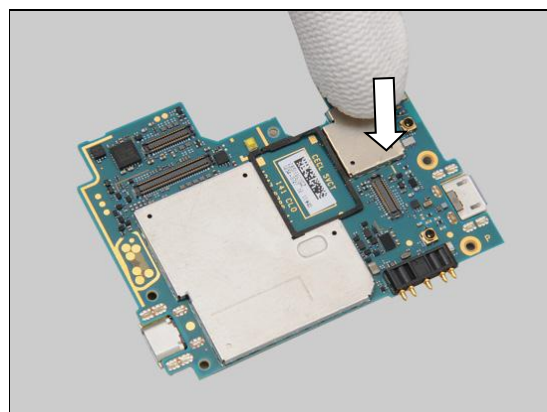
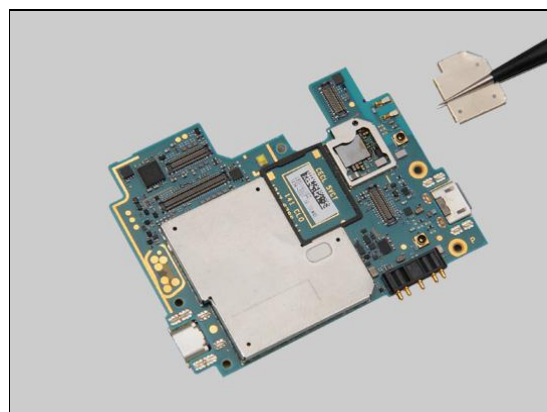
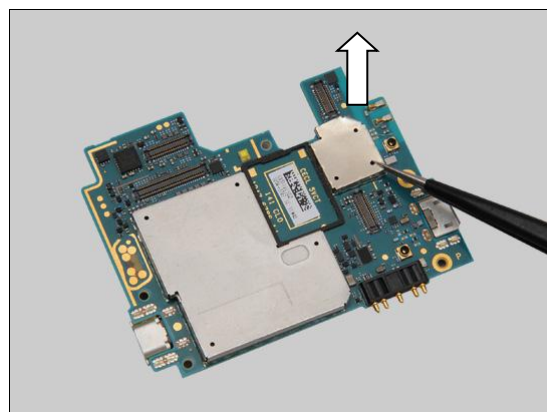
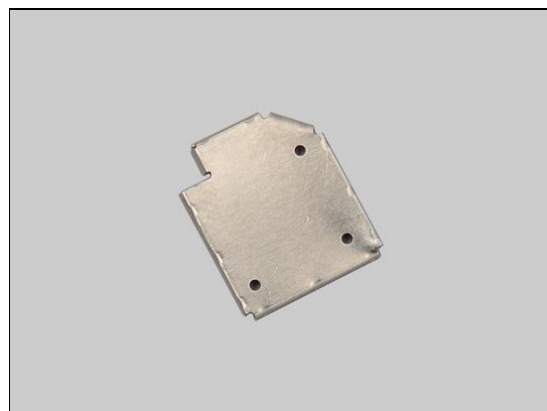
Insert the tweezers into the corners of the Shield Can Lid Non Cell and pull upwards to release it.

Scrap! Not to be reused!

Remove the Shield Can Lid Non Cell.

INSTALLATION

Place the new Shield Can Lid Non Cell and press gently until it is securely attached.



Replacement

4.47 Shield Can RF

Follow the 3.1 – 3.6 Disassembly instructions!

Carry out the Removal as described below.

Prepare the new Shield Can RF.

Carry out the Installation as described below.

Follow the 5.2 – 5.7 Reassembly instructions!

REMOVAL

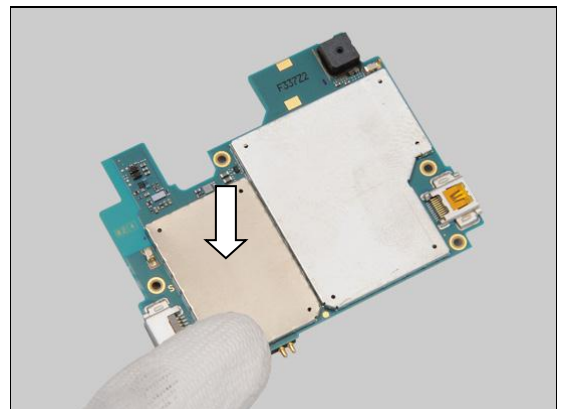
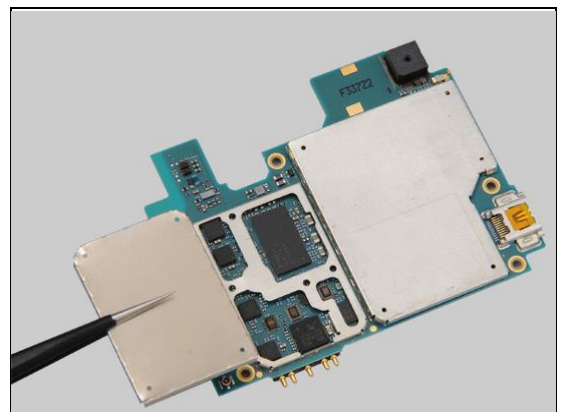
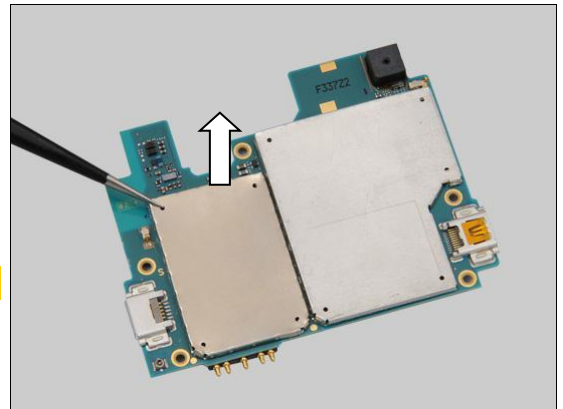
Insert the tweezers into the corners of the Shield Can RF and pull upwards to release it.

Scrap! Not to be reused!

Remove the Shield Can RF.

INSTALLATION

Place the new Shield Can RF and press gently until it is securely attached.



Replacement

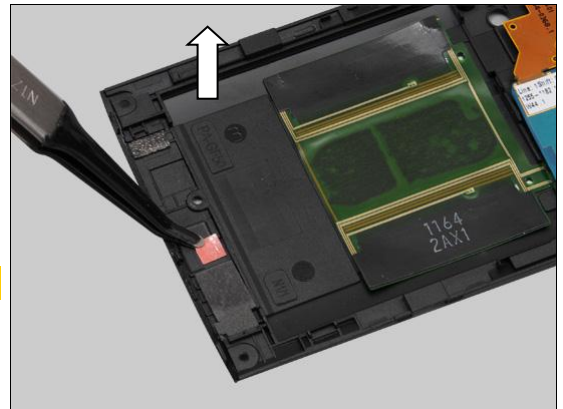
4.48 Water Indicator

Follow the 3.1 – 3.4 Disassembly instructions!
Carry out the Removal as described below.
Prepare the new Water Indicator.
Carry out the Installation as described below.
Follow the 5.4 – 5.7 Reassembly instructions!

REMOVAL

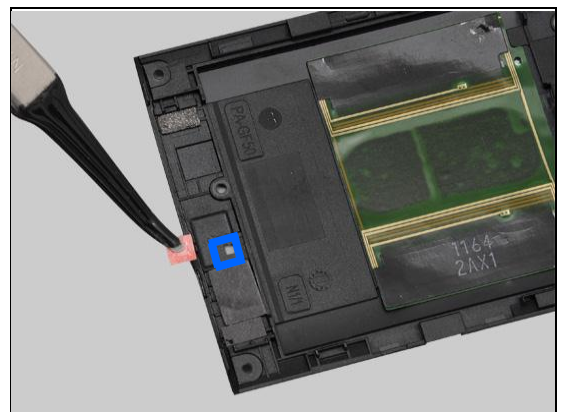
Peel off the Water Indicator by using the Flex Film Assembly Tool.

Scrap! Not to be reused!

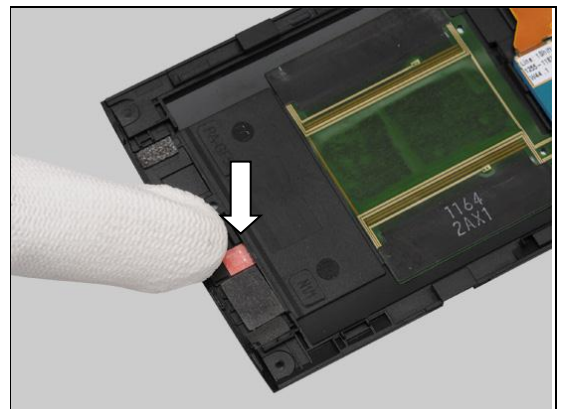


INSTALLATION

Place the new Water Indicator in the correct position.



Press to secure its attachment.



Replacement

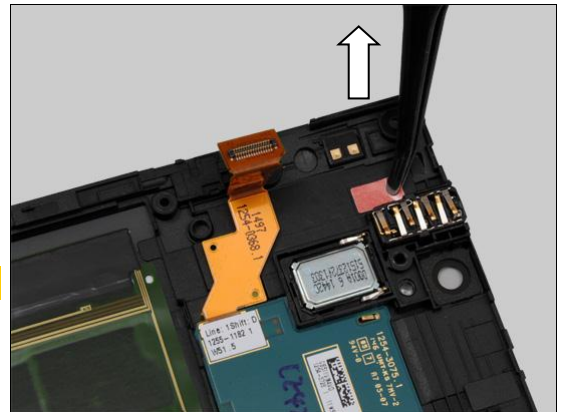
4.49 Water Indicator L

Follow the 3.1 – 3.4 Disassembly instructions!
Carry out the Removal as described below.
Prepare the new Water Indicator L.
Carry out the Installation as described below.
Follow the 5.4 – 5.7 Reassembly instructions!

REMOVAL

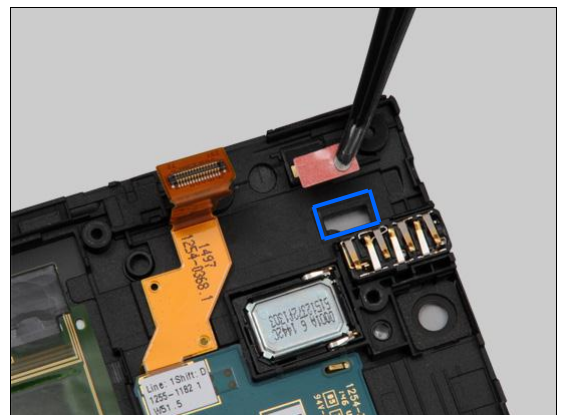
Peel off the Water Indicator L by using the Flex Film Assembly Tool.

Scrap! Not to be reused!

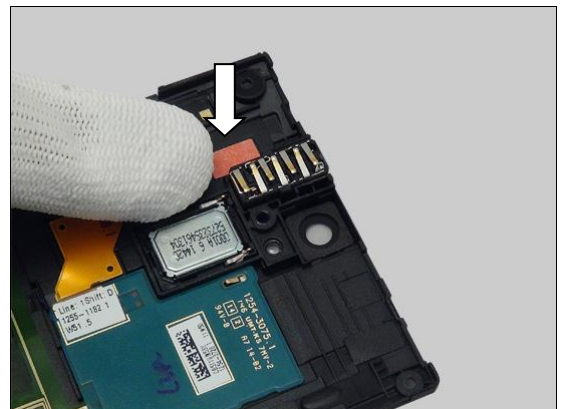


INSTALLATION

Place the new Water Indicator L in the correct position.



Press to secure its attachment.



Replacement

4.50 Board Swap - Replacement

Follow the 3.1 – 3.6 Disassembly instructions!

Replace the Swap Board.

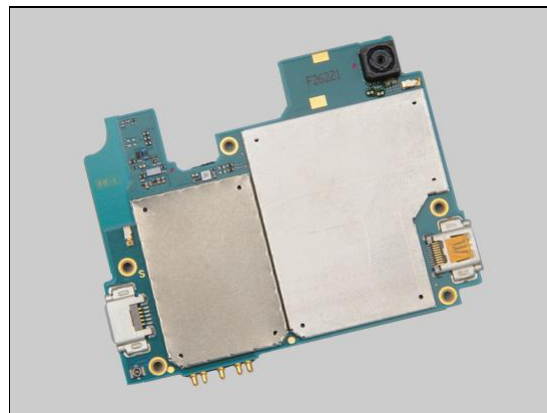
Follow the 4.18 Installation instructions!

Follow the 5.2 – 5.7 Reassembly instructions!

Press the **On/Off** key to power on the phone, wait the phone booting up on a table.

Please DO NOT move the phone during starting up until "Select Language" menu is shown on the display!

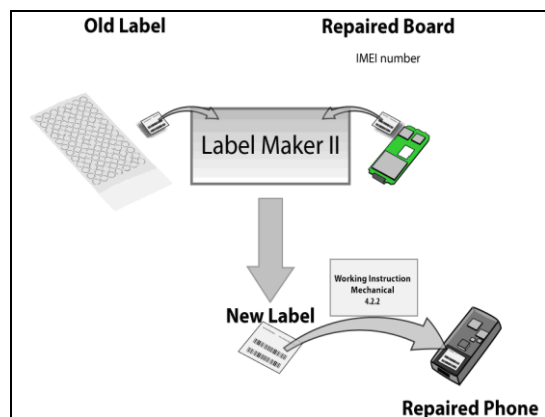
After "Select Language" menu, turn off the phone.



4.51 Board Swap – Change Label

CHANGE LABEL

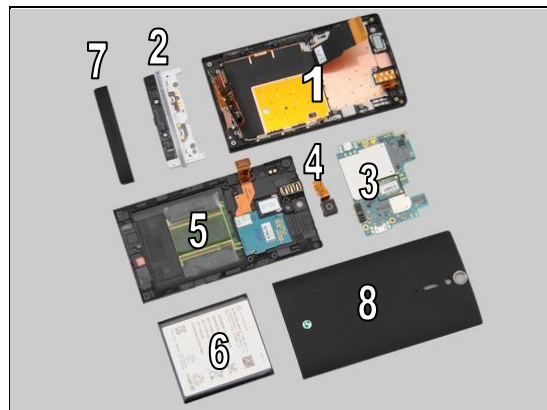
Follow the instructions in the Generic Repair Manual – Build swap for change of label.



5 Reassembly

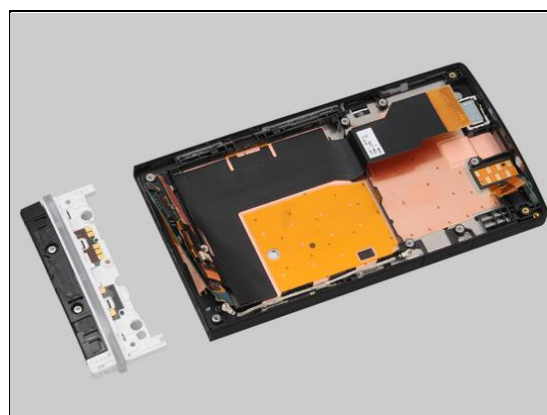
The reassembly is done in the following order:

1. Cover Front Assy
2. Cover Transparent Assy
3. Main PBA
4. Main Camera
5. Rear Frame Assy
6. Battery
7. Cover Bottom
8. Cover Rear Assy



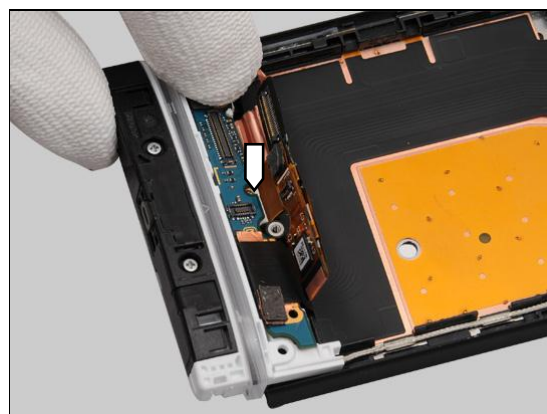
5.1 Cover Front Assy & Cover Transparent Assy

Prepare the Cover Transparent Assy and the Cover Front Assy.

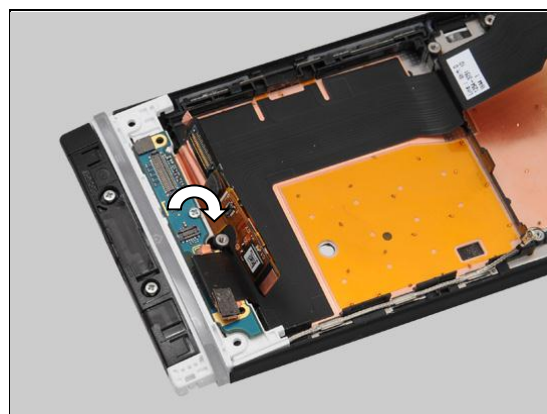


Put the sub PBA of the Main FPC on the Cover Transparent Assy.

The hole must be aligned accurately between the sub PBA of the Main FPC and the Cover Transparent Assy!



Apply 10 Ncm torque when tightening the one Screw
Len:2.0 Diam:1.4 M with Bits (JCIS No 0).

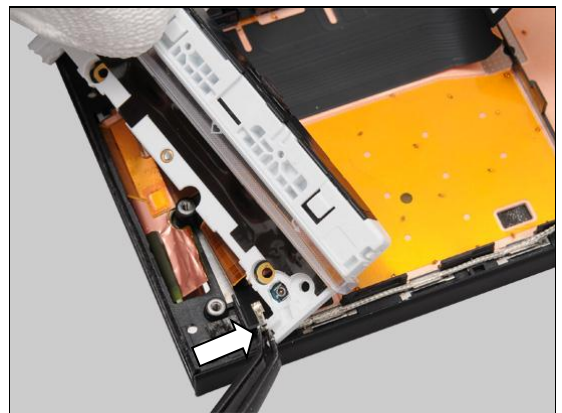


Reassembly

Turn over the Cover Transparent Assy gently.



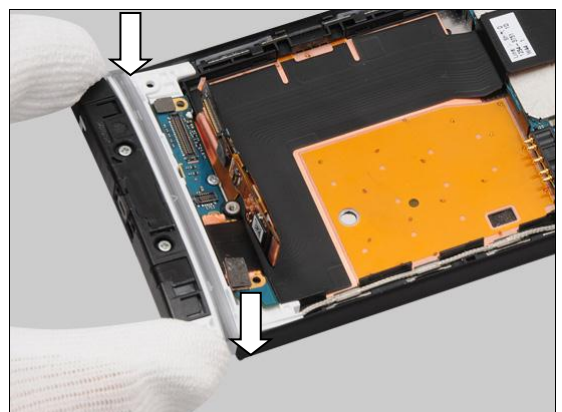
Put the RF cable into the socket on the Cover Transparent Assy and press to secure its position.



Connect one end of the RF Cable with the Flex Film Assembly Tool.

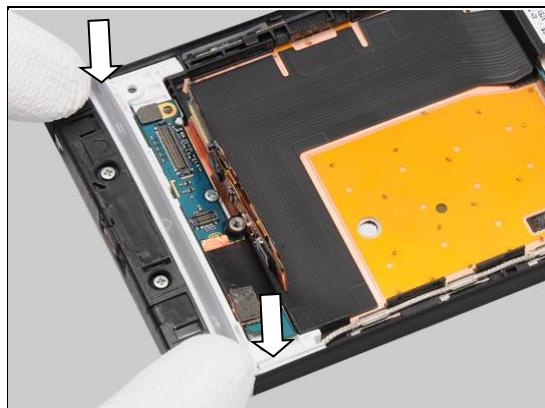


Turn over the Cover Transparent Assy gently and secure the Cover Transparent Assy into its sockets.

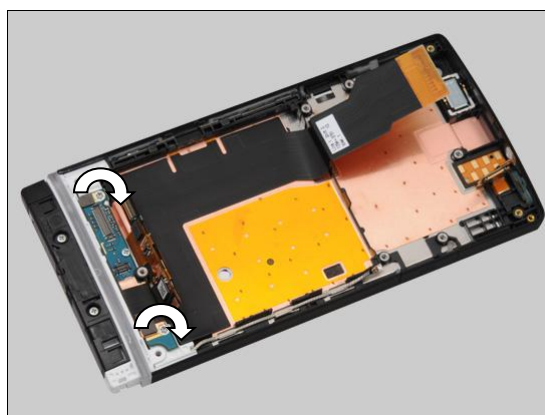


Reassembly

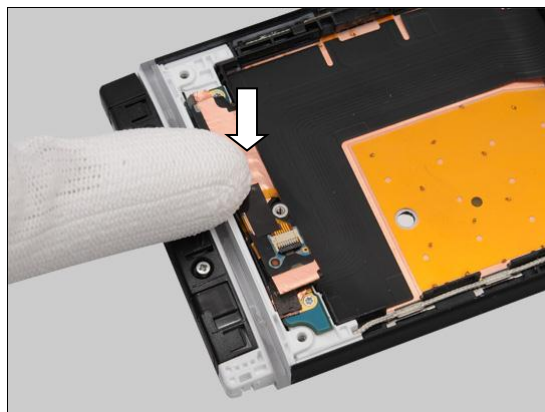
Press the Cover Transparent Assy to secure its position gently.



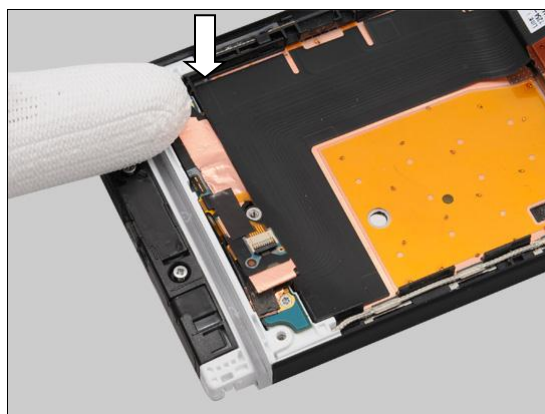
Apply 12 Ncm +/-1Ncm torque when tightening the two Screw Len:3.5 Diam:1.4 with Bits (JCIS No 0).



Connect the touch panel BtB connector with fingers.

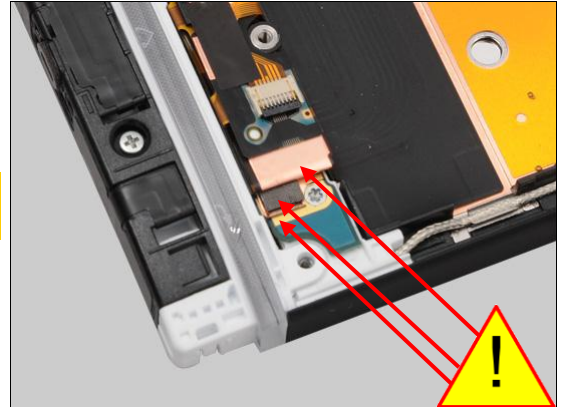


Connect the LCD BtB connector with fingers.



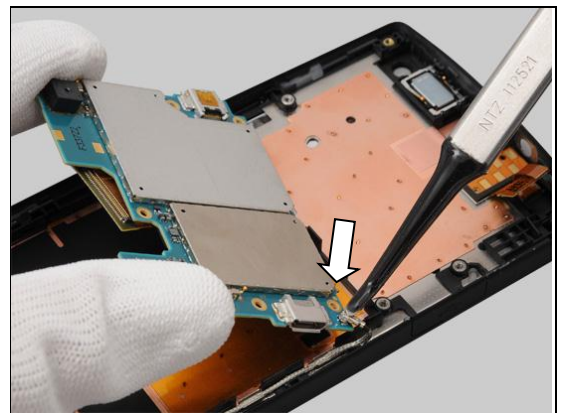
Reassembly

Make sure the three parts are secured as shown in the picture!

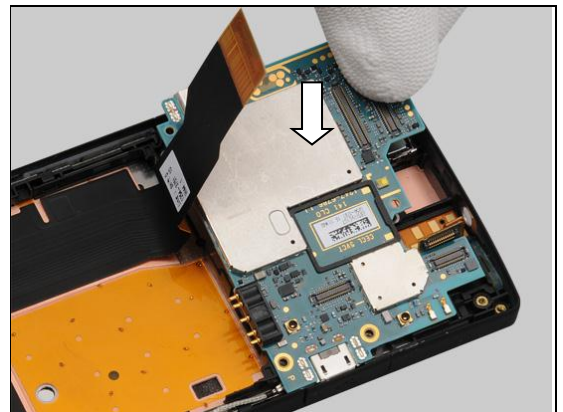


5.2 Main PBA

Connect one end of the RF Cable by using the Flex Film Assembly Tool.

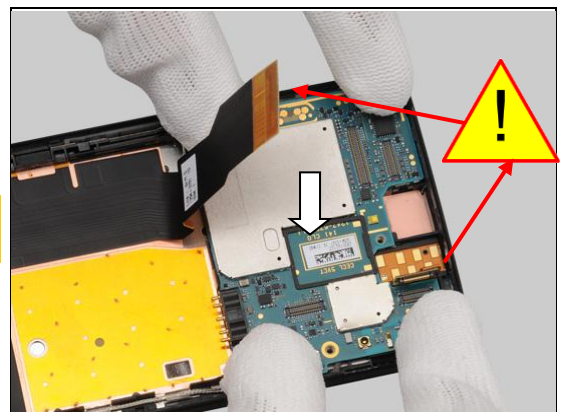


Turn over the main PBA and place the main PBA into its socket.



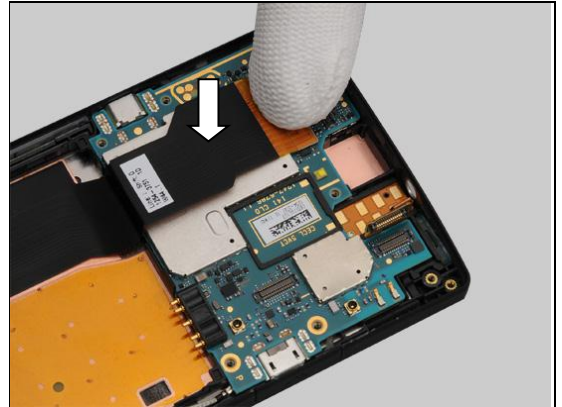
Press the main PBA to secure its position gently.

Note: Do not push down the Main FPC and FPC Jack Assy BtB connectors under the main PBA!

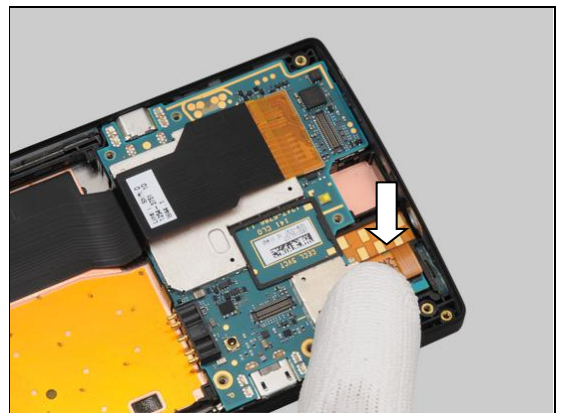


Reassembly

Connect the Main FPC BtB connector with fingers.

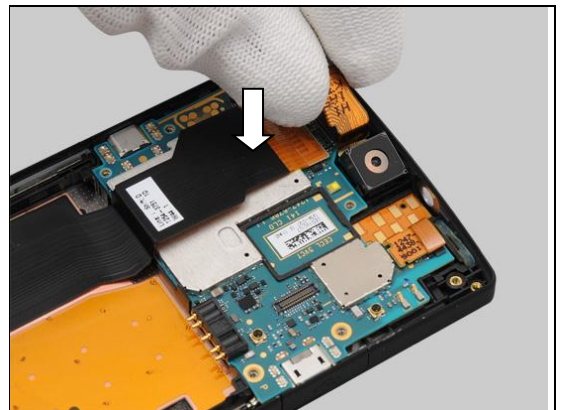


Connect the FPC Jack Assy BtB connector with fingers.

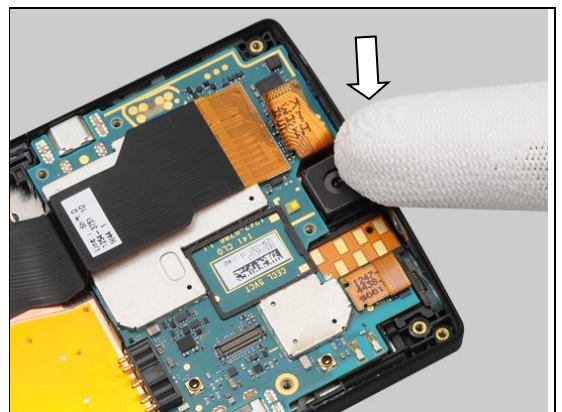


5.3 Main Camera

Place the Main Camera into its socket with 30 degree tilt with fingers.

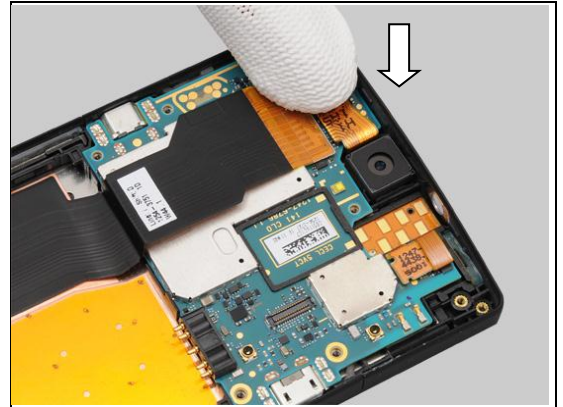


Press to secure its position gently.



Reassembly

Connect the Main Camera BtB connectors with fingers.

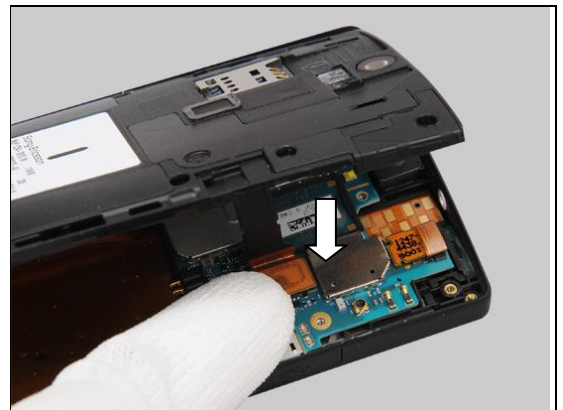


5.4 Rear Frame Assy

Prepare the Rear Frame Assy and the Unit.



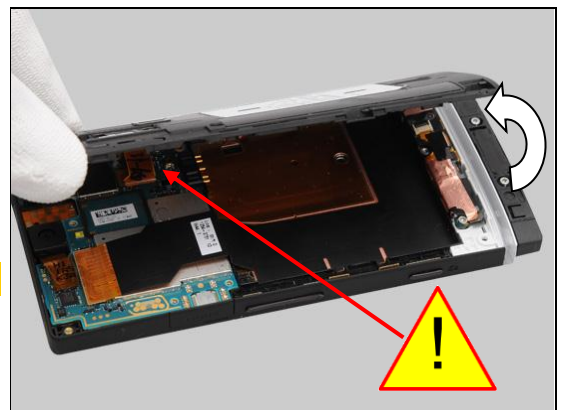
Connect the NFC BtB connector with fingers.



5.5 Battery

Raise the right side of the Rear Frame approximately 60° from the right side.

Do not draw the NFC FPC more than 60°!

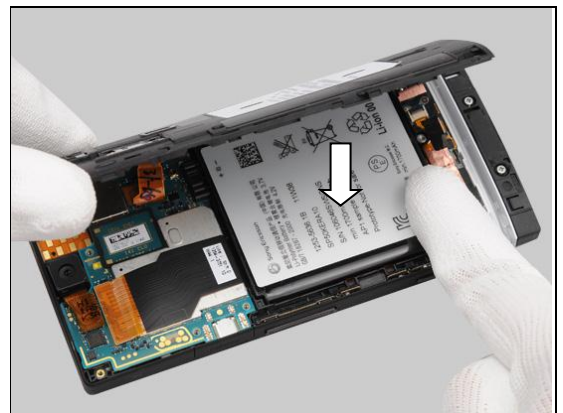


Reassembly

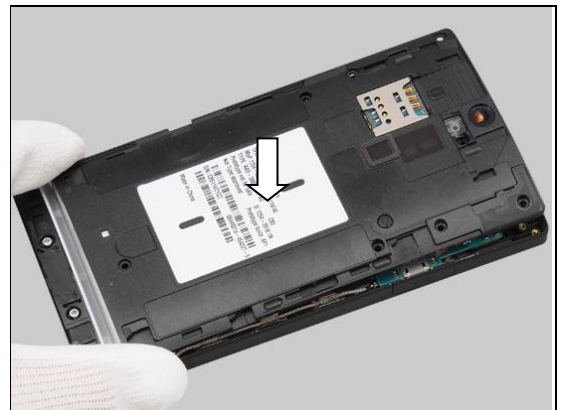
Place the Battery into its socket.



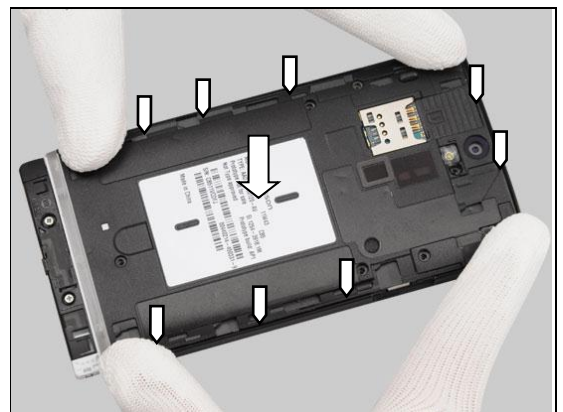
Press to secure its position.



Put the Rear Frame Assy in place.



Press to snap the hooks.

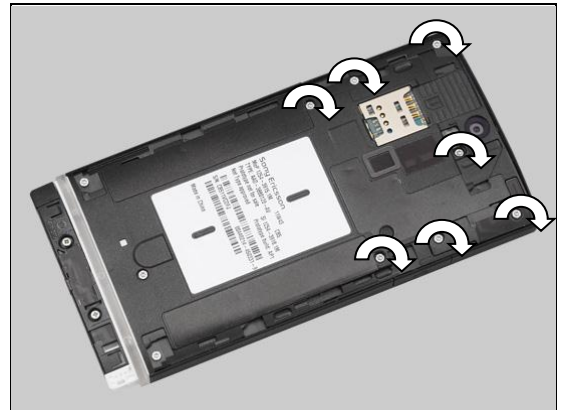


Reassembly

Apply 10 Ncm torque when tightening the three screws
Len:3.5 Diam:1.4M with Bits (JCIS No 0).



Apply 12 Ncm torque when tightening the seven Screw
Len:3.5 Diam:1.4 with T5.



5.6 Cover Bottom

Place the Cover Bottom on the Cover Transparent Assy.



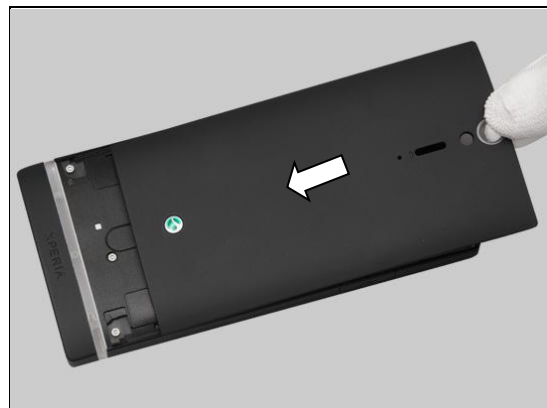
Push to Snap the Cover Bottom.



Reassembly

5.7 Cover Rear Assy

Place the Cover Battery.



Push to snap the Cover Rear Assy.



Press to snap the Cover Rear Assy.



6 Country of Origin Barcodes for Brazil/VIVO Labels

Below is a link to a list of countries of origin. If you are printing a Brazil or VIVO label, scan the barcode corresponding to the correct country of origin for the “Fabricado” field.

7 Revision History

Rev.	Date	Changes / Comments
1	2012-Mar-2	Initial release