

Working Instruction, Mechanical

Applicable for W890

CONTENTS

1	Introduction	3
1.1	Equipment.....	4
1.2	General cautions	5
1.3	Adhesives	5
2	Disassembly	6
2.1	Overview	6
2.1.1	Battery Cover & Battery.....	7
2.1.2	Front Cover Assy Complete	8
2.1.3	Rear Cover Assembly	10
2.1.4	Ant Main PIFA.....	12
2.1.5	Main PWB.....	13
2.1.6	Camera Flex Module.....	14
2.1.7	Display 2,02A-SI TFT.....	16
2.1.8	Key Flex Module and Frame Sub Assembly PWB	17
3	Replacements.....	19
3.1	Battery Cover & Battery.....	20
3.2	Front Cover Assembly Complete.....	20
3.3	Rear Cover Assembly	20
3.4	Ant Main PIFA	20
3.5	Camera Flex Module	20
3.6	Display 2,02A-SI TFT	20
3.7	Key Flex Module	20
3.8	Frame Sub Assembly PWB	20
3.9	Screw Cap	21
3.10	QCIF VGA Camera.....	22
3.11	Cap GrommetF	24
3.12	Keyboard Main.....	25
3.13	RF Cap.....	26
3.14	Key On/Off.....	27
3.15	SIM/M2 Flex Module	28
3.16	Memory stick 2GB M2	29
3.17	Key Volume.....	30
3.18	Key Camera.....	31
3.19	Key Music.....	32
3.20	Core unit label	33
3.21	Co-Brand Label.....	34

3.22 Rubber GND	35
3.23 Shield Can Lid RF.....	36
3.24 Shield Can Lid BB	37
3.25 Gasket BB	38
3.26 Gasket RF.....	39
3.27 Sheet Isolation.....	40
3.28 Sheet (Lid BB).....	41
3.29 Sheet (Lid RF)	42
3.30 Sheet (GSM)	43
3.31 Sheet (UMTS).....	44
3.32 Spacer (LCD_conn).....	45
3.33 Camera 3Mpixel CMOS	46
3.34 Cap Grommet CamR	48
3.35 Frame Sub Assembly Camera.....	49
3.36 Cushion 0.0 mm (System conn).....	51
3.37 Liquid Intrusion Indicator	52
4 Reassembly	54
4.1 Overview	54
4.1.1 Frame Sub Assembly PWB and Key Flex Module	55
4.1.2 Display 2,02A-SI TFT.....	56
4.1.3 Camera Flex Module.....	57
4.1.4 Main PWB	59
4.1.5 Ant Main PIFA.....	60
4.1.6 Rear Cover Assembly	61
4.1.7 Front Cover Assembly Complete	62
4.1.8 Battery & Battery Cover	63
5 Revision history	64

1 Introduction



1.1 Equipment

SPECIAL TOOLS

Special tools text:

- NTZ 122 459 Torque screwdriver (or equivalent)
- NTZ 122 288 Bits (T6)
- NTZ 112 1052 Bits(JCIS No 0)
- NTZ 112 302/2 Front opening tool
- NTZ 122 521 Flex film assembly tool
- 1207-0198 Camera Removal Tool 3Mpixel
- NTZ1121077 Camera Tool
- NTZ 112 590 Plectrum/SVC & Repair



STANDARD TOOLS

Standard tools text:

- Dentist hook
- ESD tweezers
- Nylon Pointer



ESD EQUIPMENT

Protect the phone from ESD damages whenever it has been opened by using:

- ESD-wristband
- ESD-gloves



LABEL EQUIPMENT

The following special equipment is required when replacing or installing a new label:

- Hot air flow solder station
- Zebra printer connected to computer



1.2 General cautions

The following cautions are considered to be generic for all phone models and will not be repeated in the Disassembly, Replacements and Reassembly sections:

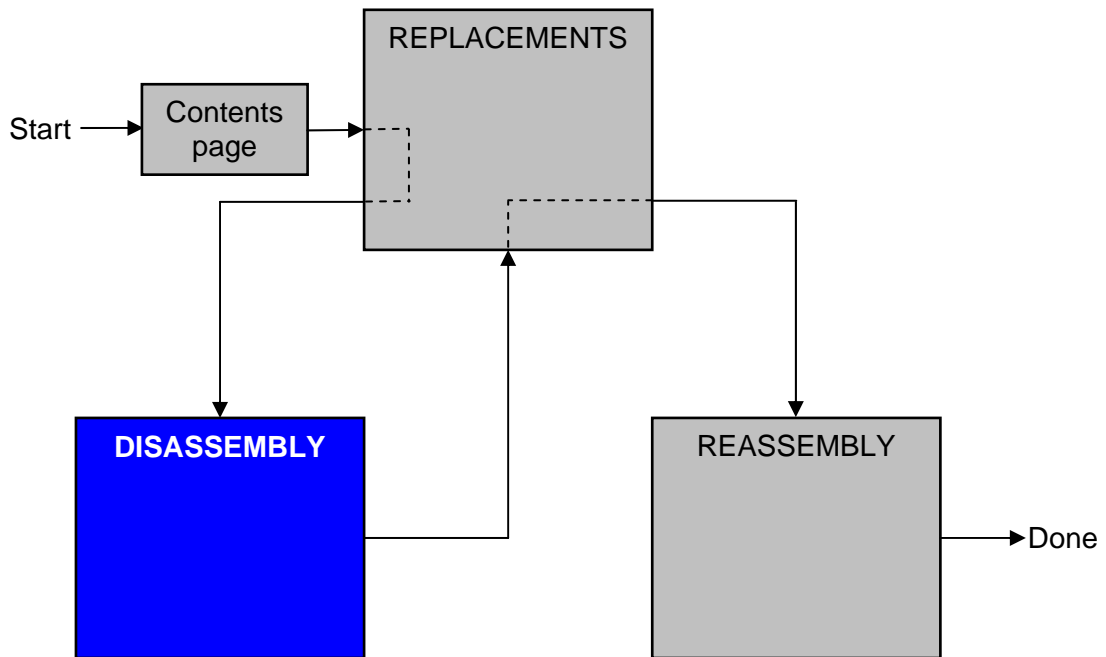
- **SWITCH OFF THE PHONE AND REMOVE ANY MEMORY STICK BEFORE THE START OF THE DISASSEMBLY!**
- **KEEP ALL CONTACT SURFACES CLEAN!**
- **BE CAREFUL WHEN USING TOOLS LIKE THE DENTIST HOOK, TWEEZERS, OPENING TOOLS, GUITAR PICK ETC. TO AVOID SCRATCHES OR DAMAGES TO THE EXTERIOR AND INTERIOR PARTS OF THE PHONE!**
- **BE CAREFUL NOT TO DAMAGE ANY CONTACT SPRINGS!**
- **REMEMBER TO REMOVE THE PROTECTION FOILS ON NEW PARTS SUCH AS THE FRONT COVER AND LCD!**
- **NEVER TOUCH THE DISPLAY GLASS!**
- **USE AIR BLOW EQUIPMENT TO KEEP THE FRONT WINDOW AND DISPLAY MODULE DUST FREE!**

1.3 Adhesives

Use a dentist hook and/or the tweezers to remove old adhesives.
Clean the surface with isopropyl alcohol before attaching new adhesives.

2 Disassembly

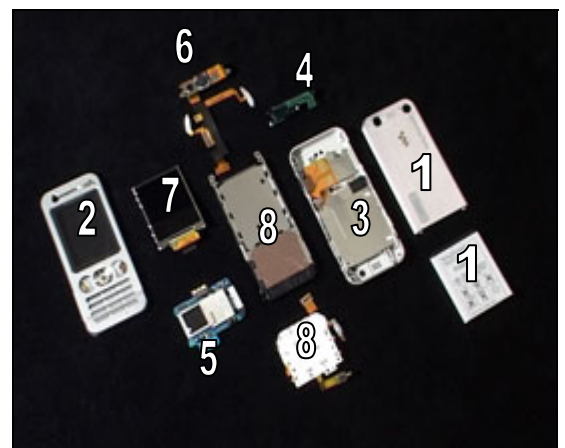
When you are going to replace a part being listed in *Replacements*, the instruction of that section usually begins by directing you to this *Disassembly* section with a specification of the instructions you have to carry out in order to disassemble the phone as far as needed before returning to *Replacements* for the actual replacement.



2.1 Overview

The disassembly is done in the following sequence:

1. Battery Cover & Battery
2. Front Cover Assy Complete
3. Rear Cover Assembly
4. Ant Main PIFA
5. Main PWB
6. Camera Flex Module
7. Display 2,02A-SI TFT
8. Key Flex Module and Frame Sub Assembly PWB



2.1.1 Battery Cover & Battery

Use your fingers to unsnap the two locks on the side of the phone.



Lift up the battery cover

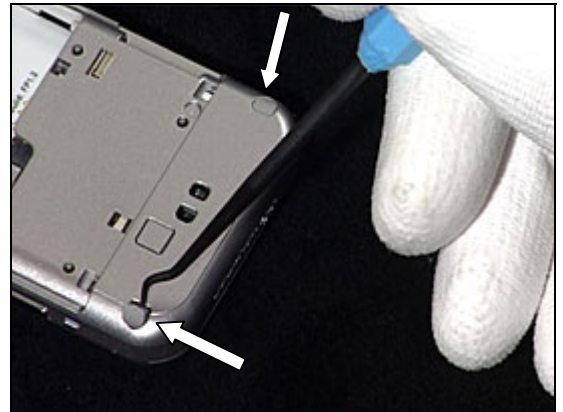


Remove the Battery



2.1.2 Front Cover Assy Complete

Use a dentist hook to remove the two Screw caps



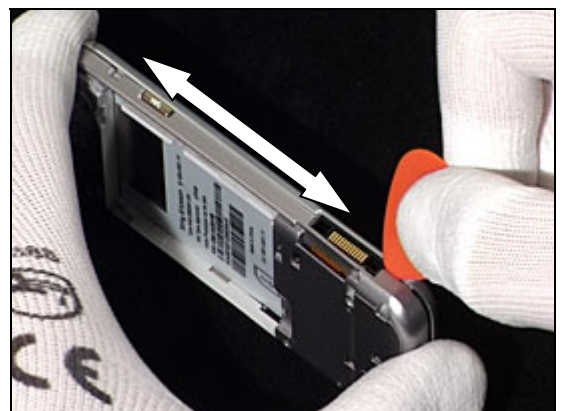
Use Torx bit no 6 to remove the four screws



Use a guitar pick to unsnap the Front Cover



Continue on the other side to unsnap the Front Cover



Disassembly Instruction *continued*

Remove the Front Cover Assembly Complete

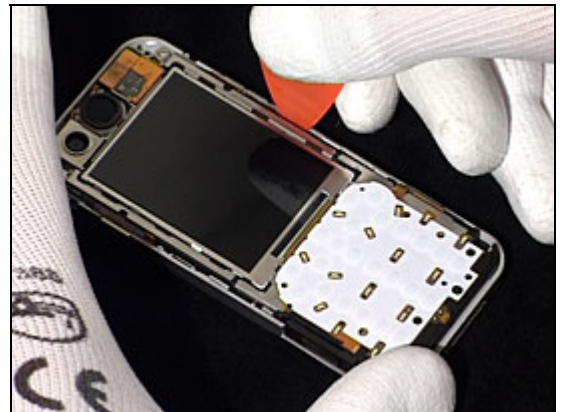


2.1.3 Rear Cover Assembly

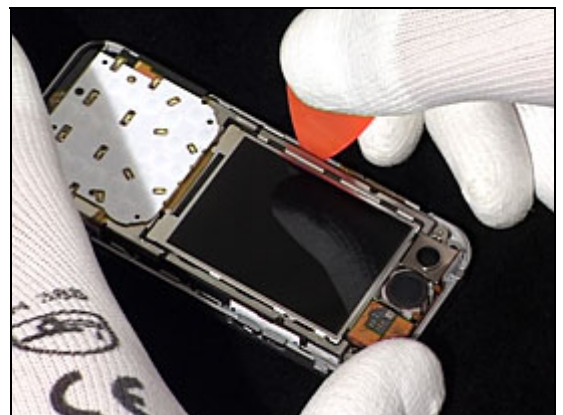
Locate the four snap hooks



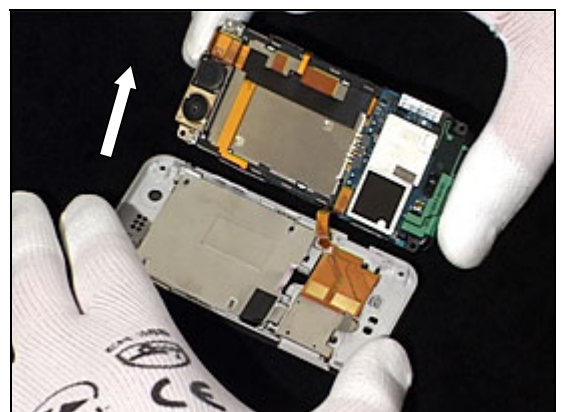
Use a guitar pick to unhook the Rear Cover Assembly



Use a guitar pick to unhook the Rear Cover Assembly

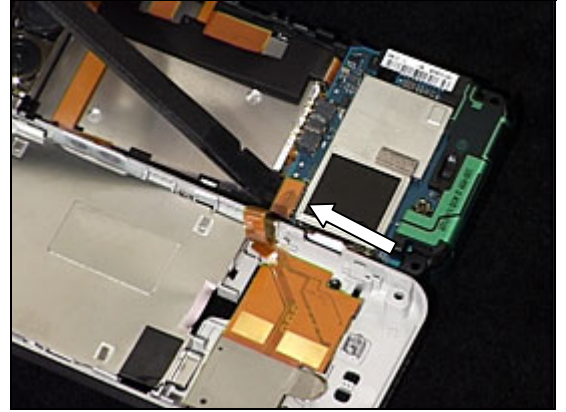


Flip over the Rear Cover Assembly



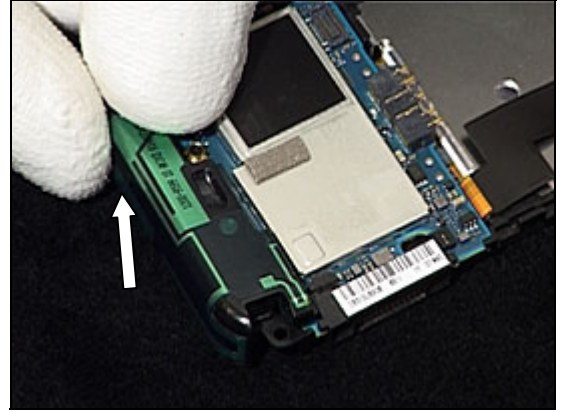
Disassembly Instruction *continued*

Use a Nylon Pointer to detach the Rear Cover Assembly

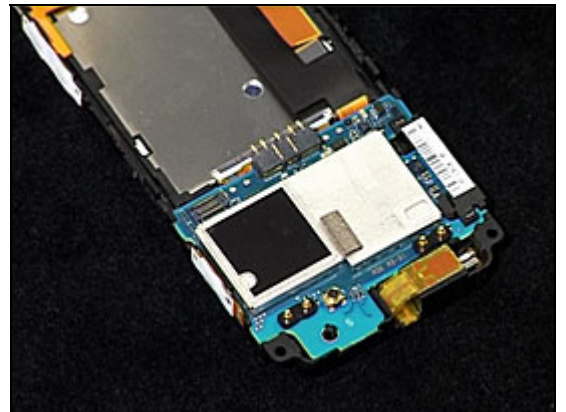


2.1.4 Ant Main PIFA

Use your fingers to unsnap the Antenna

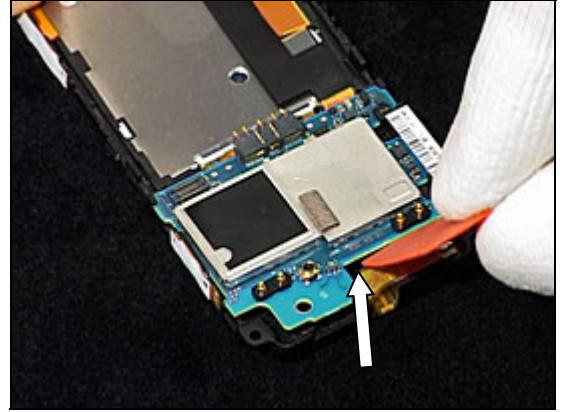


Remove the Antenna Main PIFA

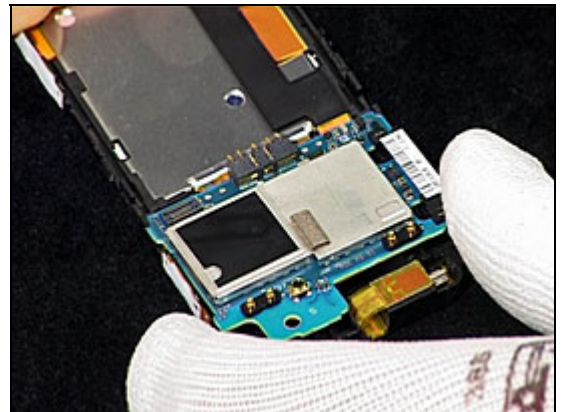


2.1.5 Main PWB

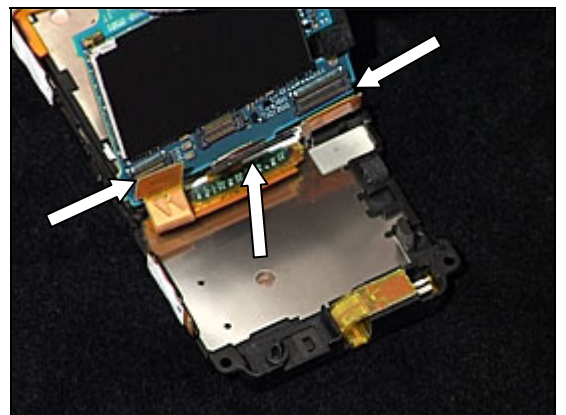
Use a Plectrum to unsnap the Main PWB



Use your fingers to flip over the Main PWB

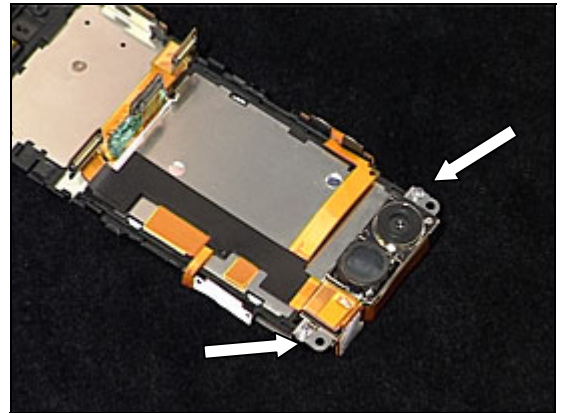


Use a Nylon Pointer to detach the three BtB connectors

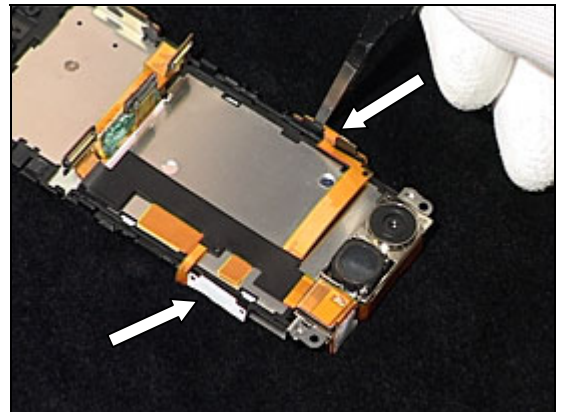


2.1.6 Camera Flex Module

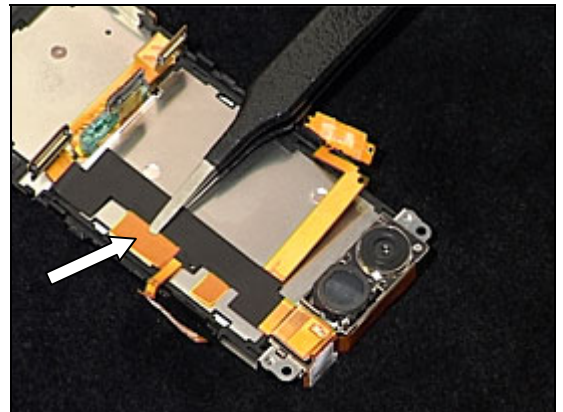
Use the JCIS bit to remove the two screws



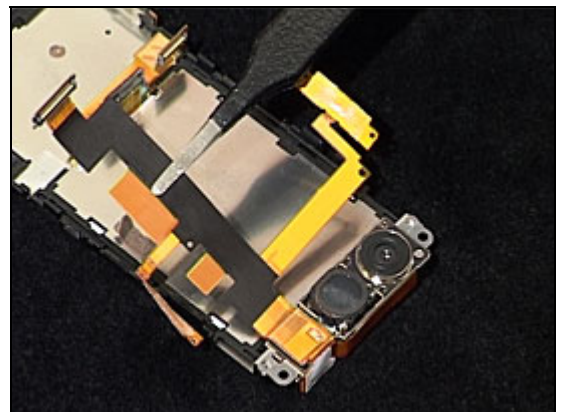
Use a Flex film assembly tool to detach the pads



Use a Flex film assembly tool to detach the Camera Flex Module

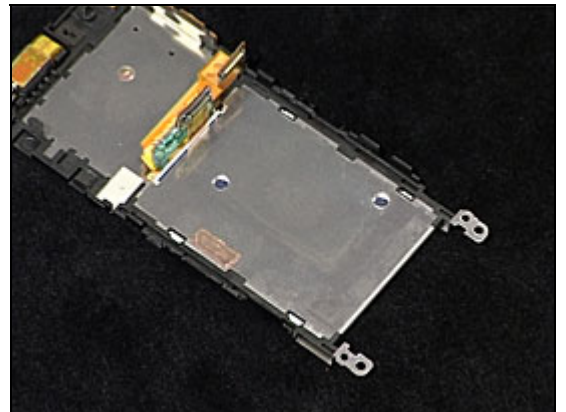
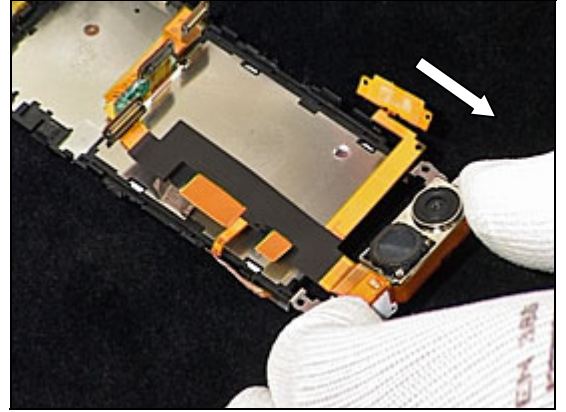


Use a Flex film assembly tool to detach the Camera Flex Module



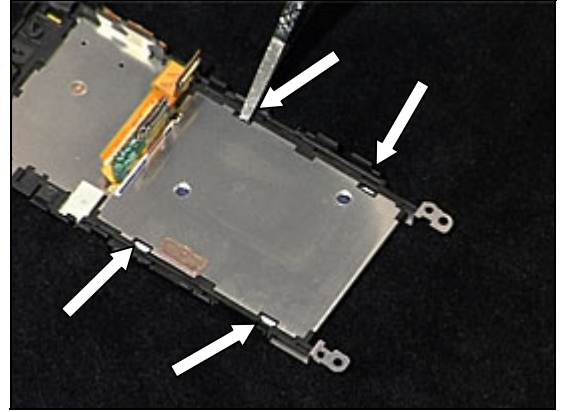
Disassembly Instruction *continued*

Remove the Camera Flex Module

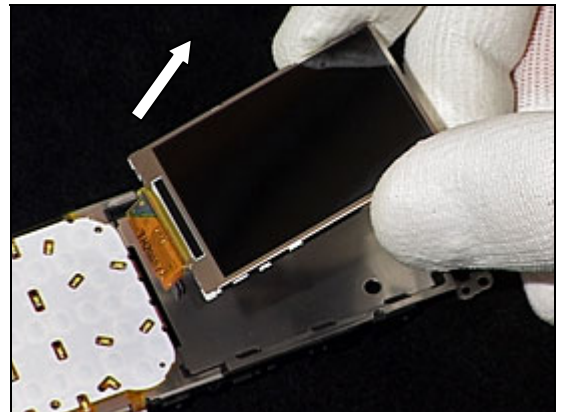


2.1.7 Display 2,02A-SI TFT

Use a pair of tweezers to unsnap the display

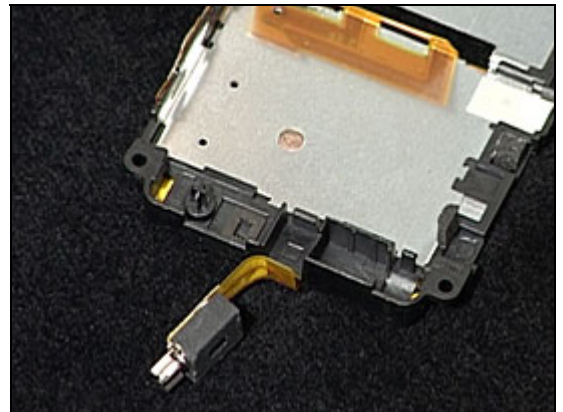
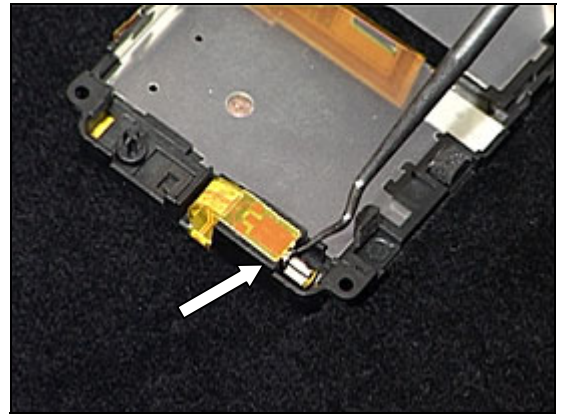


Use your fingers to remove the display

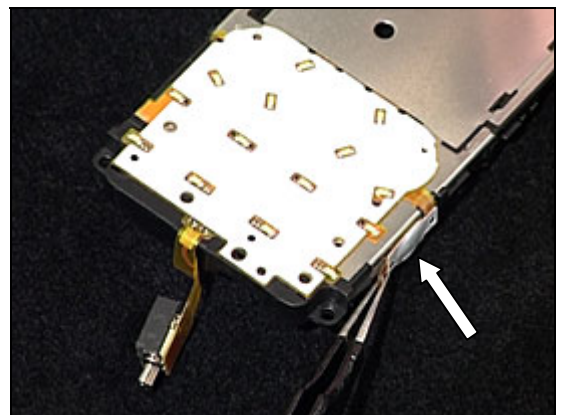


2.1.8 Key Flex Module and Frame Sub Assembly PWB

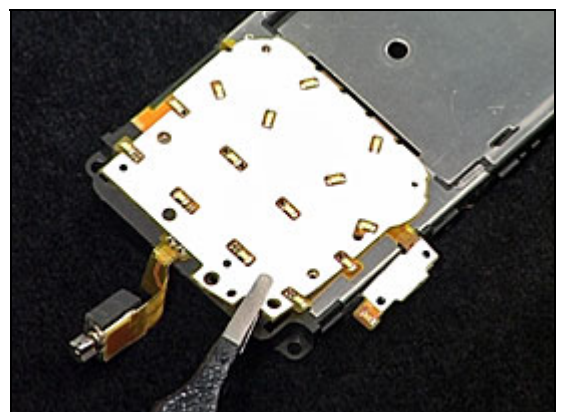
Use a dentist hook to unsnap the vibrator



Use a Flex film assembly tool to detach the camera pad

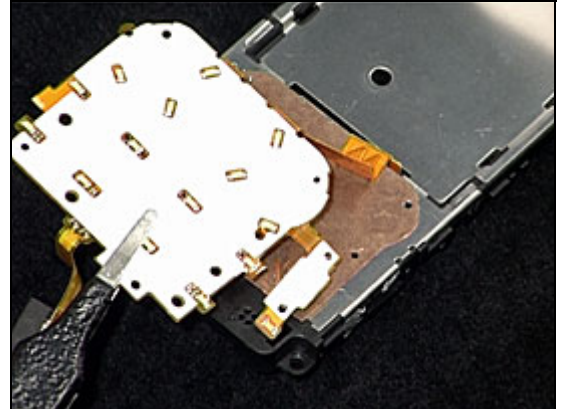


Use a Flex film assembly tool to detach the key flex module



Disassembly Instruction *continued*

Use a Flex film assembly tool to remove the Key Flex Module.



Frame Sub Assembly PWB



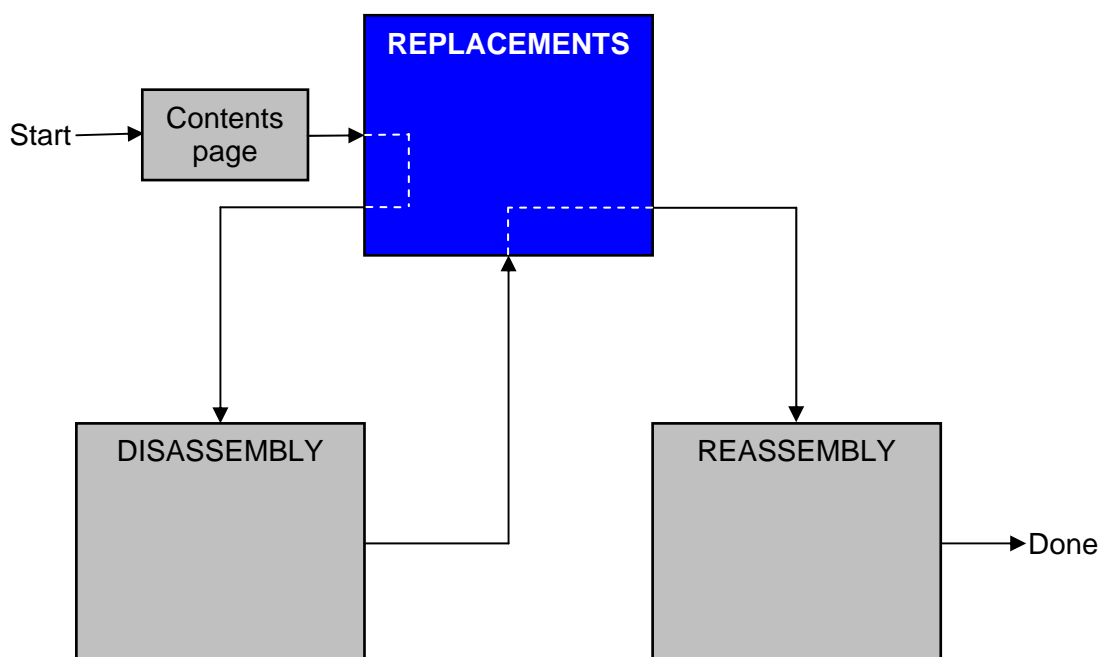
3 Replacements

Search for the part to be replaced on the Contents page and go to that instruction to be found in this *Replacements* section.

The instruction usually begins by directing you to the *Disassembly* section with a specification of the instructions you have to carry out in order to disassemble the phone as far as needed before the actual replacement.

Go back to this *Replacements* section and carry out the instruction.

The instruction usually ends by directing you to the *Reassembly* section with a specification of the instructions you have to carry out in order to reassemble the phone.



3.1 Battery Cover & Battery

Follow the 2.1.1 Disassembly instructions!

Replace Battery Cover and/or Battery

Follow the 4.1.8 Reassembly instructions!

3.2 Front Cover Assembly Complete

Follow the 2.1.1 – 2.1.2 Disassembly instructions!

Replace Front Cover Assembly Complete

Follow the 4.1.7 – 4.1.8 Reassembly instructions!

3.3 Rear Cover Assembly

Follow the 2.1.1 – 2.1.3 Disassembly instructions!

Replace Rear Cover Assembly

Follow the 4.1.6 – 4.1.8 Reassembly instructions!

3.4 Ant Main PIFA

Follow the 2.1.1 – 2.1.4 Disassembly instructions!

Replace Ant Main PIFA

Follow the 4.1.5 – 4.1.8 Reassembly instructions!

3.5 Camera Flex Module

Follow the 2.1.1 – 2.1.6 Disassembly instructions!

Replace Camera Flex Module

Follow the 4.1.3 – 4.1.8 Reassembly instructions!

3.6 Display 2,02A-SI TFT

Follow the 2.1.1 – 2.1.7 Disassembly instructions!

Replace Display

Follow the 4.1.2 – 4.1.8 Reassembly instructions!!

3.7 Key Flex Module

Follow the 2.1.1 – 2.1.8 Disassembly instructions!

Replace Key Flex Module

Follow the 4.1.1 – 4.1.8 Reassembly instructions!

3.8 Frame Sub Assembly PWB

Follow the 2.1.1 – 2.1.8 Disassembly instructions!

Replace Frame Sub Assembly PWB

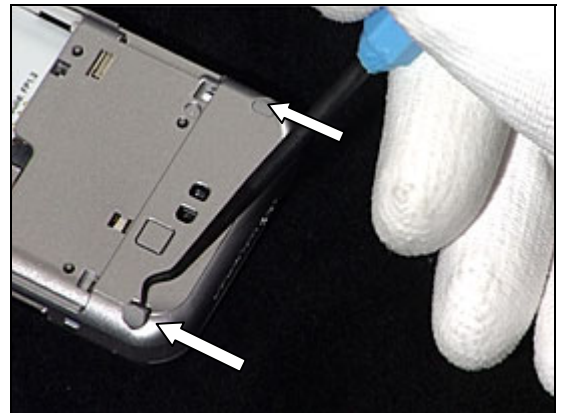
Follow the 4.1.1 – 4.1.8 Reassembly instructions!

3.9 Screw Cap

Removal

No disassembly needed!

Use a dentist hook to remove the two Screw caps



Installation

Use your fingers to position the two screw caps

No Reassembly needed!



3.10 QCIF VGA Camera

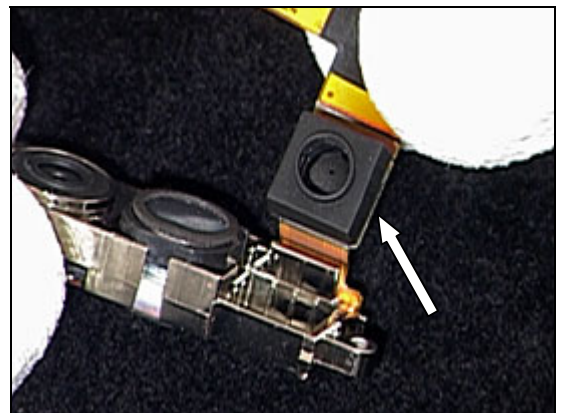
Removal

Follow the 2.1.1 – 2.1.6 Disassembly instructions!

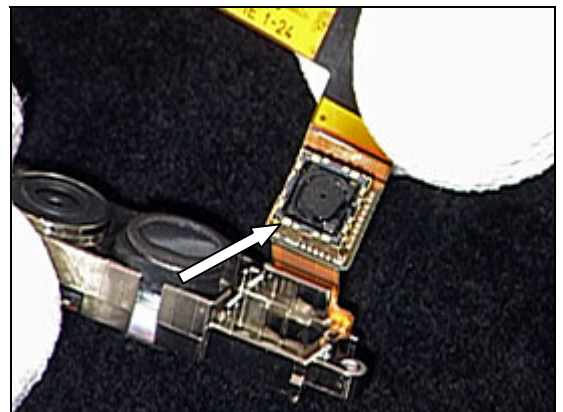
Use your fingers to remove the Cap GrommetF and QCIF VGA Camera from the Frame Sub Camera Assembly



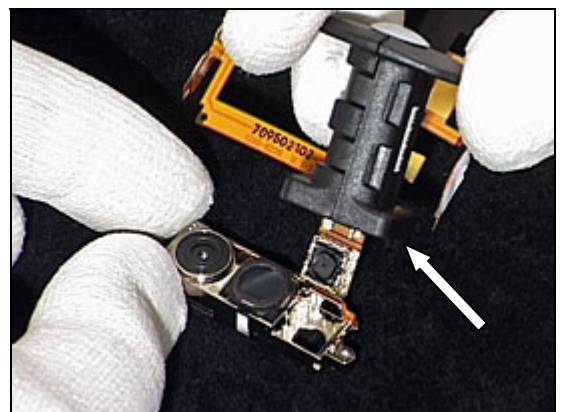
Use your fingers to remove the Cap GrommetF and QCIF VGA Camera from the Frame Sub Camera Assembly



Use your fingers to remove the Cap GrommetF from the QCIF VGA Camera

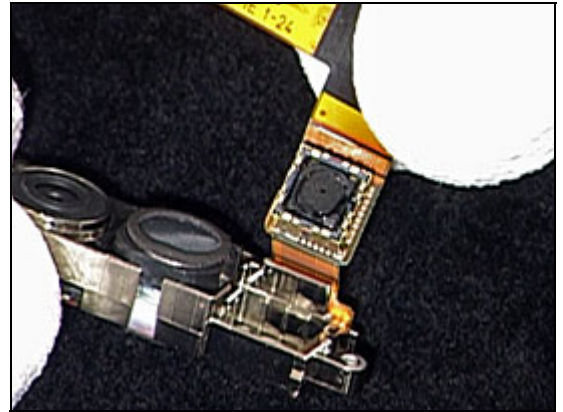


Use a Camera Removal Tool VGA to remove the QCIF VGA Camera

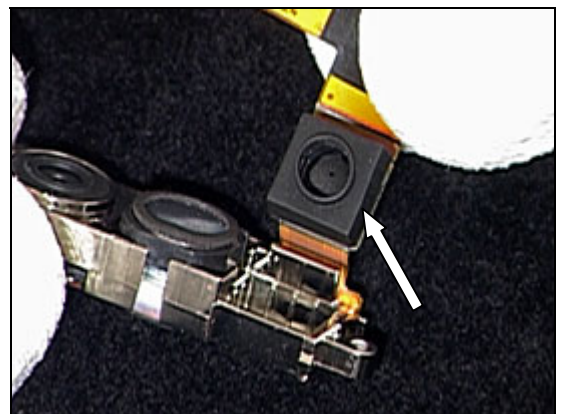


Installation

Use your fingers to attach the QCIF VGA Camera



Use your fingers to attach the Cap GrommetF to the QCIF VGA Camera



Use your fingers to attach the Cap GrommetF and QCIF VGA Camera to the Frame Sub Assembly Camera

Follow the 4.1.3 – 4.1.8 Reassembly instructions!



3.11 Cap GrommetF

Removal

Follow the 2.1.1 – 2.1.6 Disassembly instructions!

Use your fingers to remove the Cap GrommetF and QCIF VGA Camera from the Frame Sub Camera Assembly

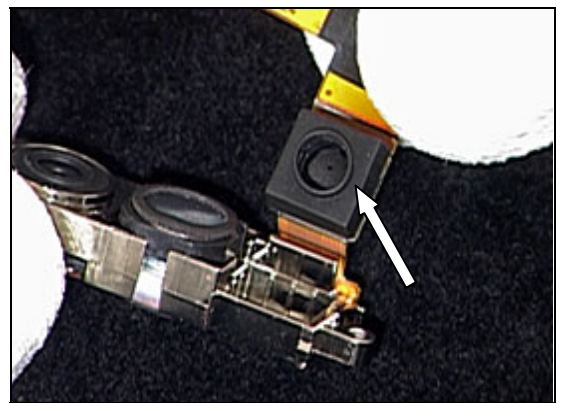
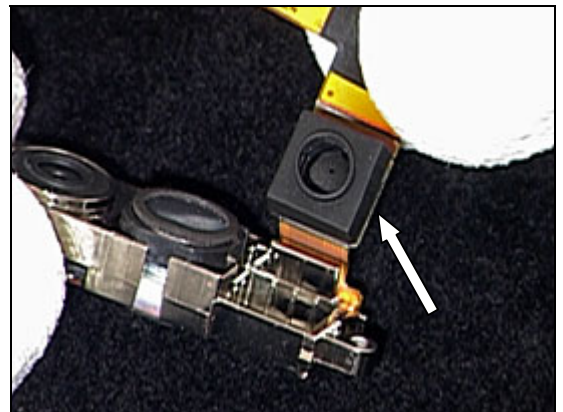
Use your fingers to detach the Cap GrommetF.

Installation

Use your fingers to attach the Cap GrommetF

Use your fingers to attach the Cap GrommetF and QCIF VGA Camera to the Frame Sub Camera Assembly

Follow the 4.1.3 – 4.1.8 Reassembly instructions!



3.12 Keyboard Main

Removal

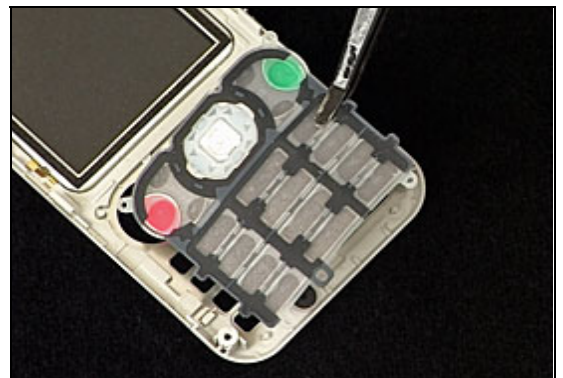
Follow the 2.1.1 – 2.1.2 Disassembly instructions!

Use the Flex Film Assembly tool to remove the Keyboard Main

Installation

Use your fingers to position the Keyboard Main

Follow the 4.1.7 – 4.1.8 Reassembly instructions!



3.13 RF Cap

Removal

No disassembly needed!



Use a Dentist Hook to remove the RF Cap



Installation

Use your fingers to attach the RF Cap

No reassembly needed!



3.14 Key On/Off

Removal

Follow the 2.1.1 – 2.1.3 Disassembly instructions!



Use a pair of tweezers to remove the On/Off Key



Installation

Use a pair of tweezers to position the On/Off Key

Follow the 4.1.6 – 4.1.8 Reassembly instructions!



3.15 SIM/M2 Flex Module

Removal

Follow the 2.1.1 – 2.1.3 Disassembly instructions!

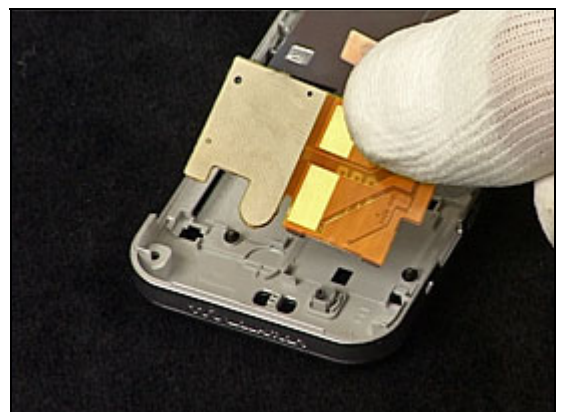
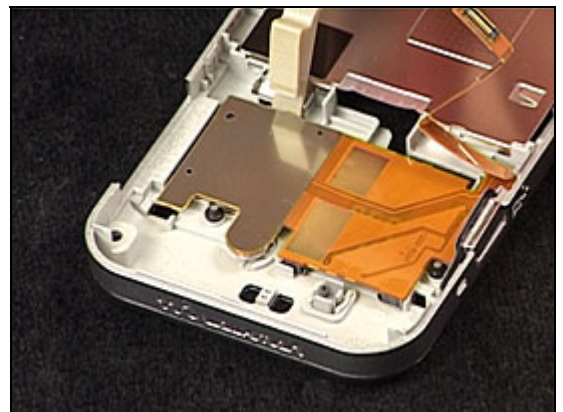
Use a Front Opening Tool to remove the SIM/M2 flex module

Installation

Use your fingers to position the SIM/M2 flex module

Use your fingers to attach the SIM/M2 flex module

Follow the 4.1.6 – 4.1.8 Reassembly instructions!



3.16 Memory stick 2GB M2

Follow the 2.1.1 Disassembly instructions!

Replace the Memory Stick 2GB M2

Follow the 4.1.8 Reassembly instructions!



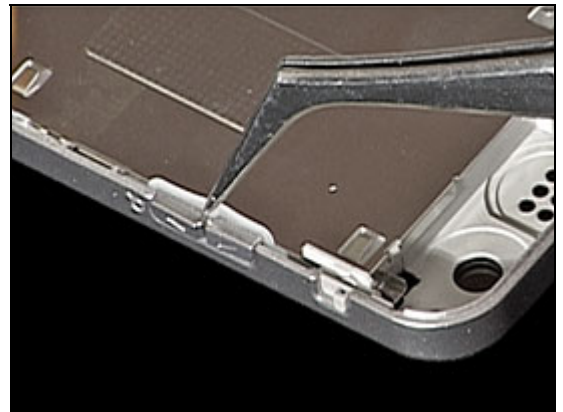
3.17 Key Volume

Removal

Follow the 2.1.1 – 2.1.3 Disassembly instructions!



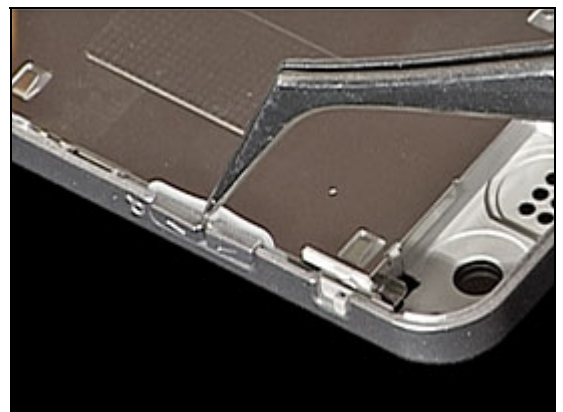
Use a pair of tweezers to remove the Key Volume



Installation

Use a pair of tweezers to position the Key Volume

Follow the 4.1.6 – 4.1.8 Reassembly instructions!



3.18 Key Camera

Removal

Follow the 2.1.1 – 2.1.3 Disassembly instructions!



Use a pair of tweezers to remove the Key Camera



Installation

Use a pair of tweezers to position the Key Camera

Follow the 4.1.6 – 4.1.8 Reassembly instructions!



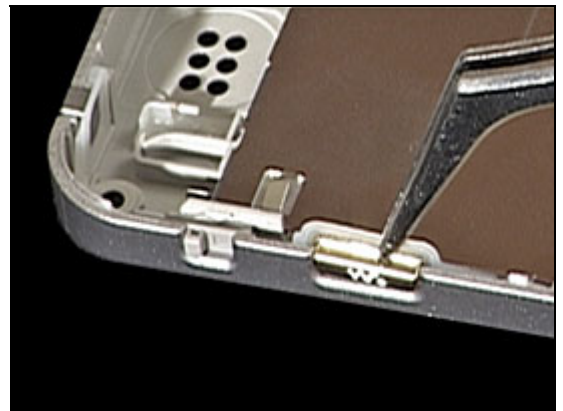
3.19 Key Music

Removal

Follow the 2.1.1 – 2.1.3 Disassembly instructions!



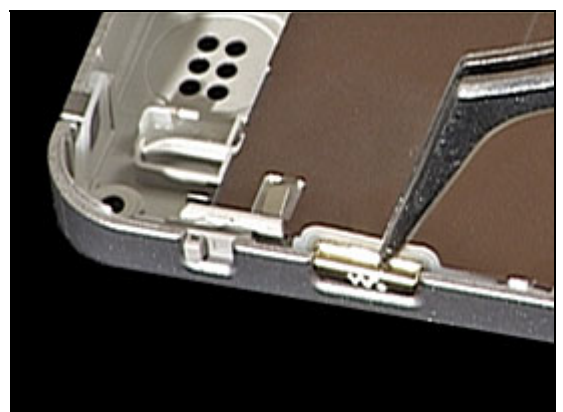
Use a pair of tweezers to remove the Key Music



Installation

Use a pair of tweezers to position the Key Music

Follow the 4.1.6 – 4.1.8 Reassembly instructions!



3.20 Core unit label

Follow the 2.1.1 Disassembly instructions!

- Read the old label and/or write the information into the “Label make” program before removal
 - Note the position of the label before removal
 - Heat up the label by using hot air, if needed
 - Carefully remove the label without causing scratches
 - If there still are residues, clean the surface with isopropyl alcohol
-
- Check that the proper label format is loaded in the Zebra printer
 - Write a new label by using the program “Label make” and check that the printing is OK
 - Take the new label and place it onto the frame as in the adjacent picture

One label only is allowed!

Follow the 4.1.8 Reassembly instructions



3.21 Co-Brand Label

Removal

No Disassembly needed!



Use a Dentist Hook to remove the Co-Brand label



Installation

Use your fingers to attach the Co-Brand Label

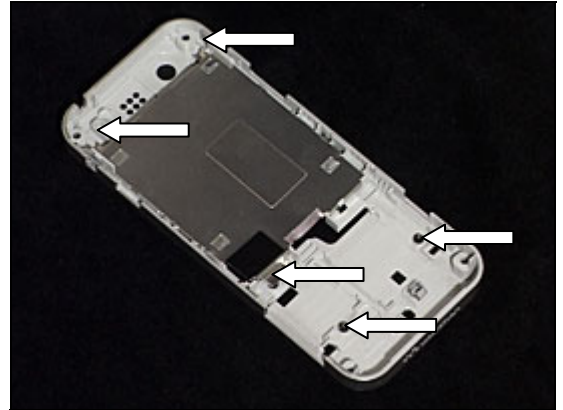
No Reassembly needed!



3.22 Rubber GND

Removal

Follow the 2.1.1 – 2.1.3 Disassembly instructions!



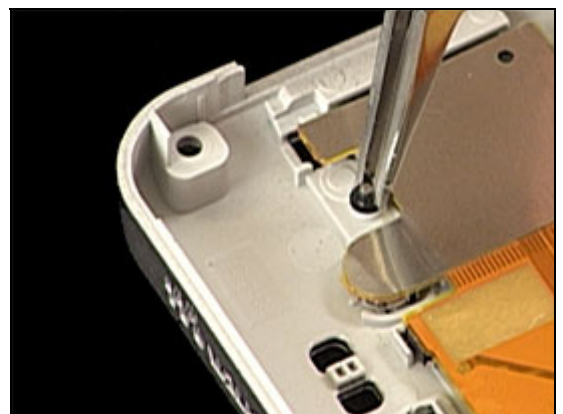
Use a Dentist Hook to remove the Rubber GND



Installation

Use a pair of tweezers to position the Rubber GND

Follow the 4.1.6 – 4.1.8 Reassembly instructions!

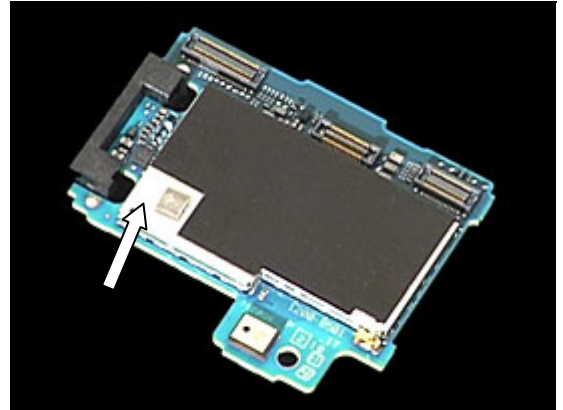


3.23 Shield Can Lid RF

Removal

Follow the 2.1.1 – 2.1.5 Disassembly instructions!

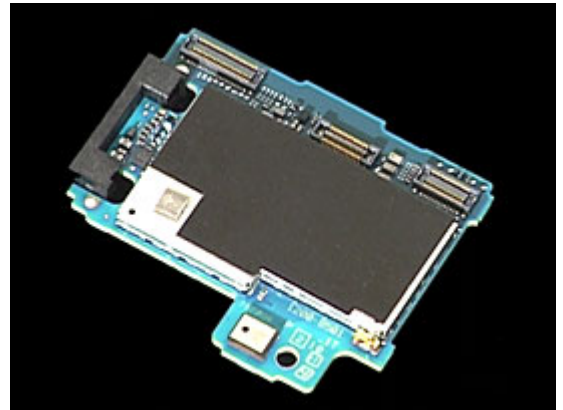
Use a Front open removal tool to remove the Shield Can Lid RF



Installation

Use your fingers to position a new Shield Can Lid RF

Follow the 4.1.4 – 4.1.8 Reassembly instructions!

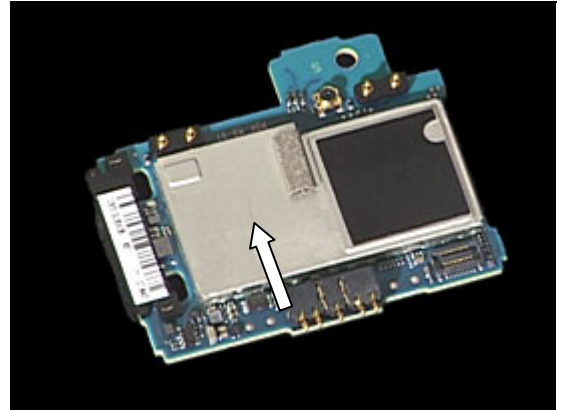


3.24 Shield Can Lid BB

Removal

Follow the 2.1.1 – 2.1.3 Disassembly instructions!

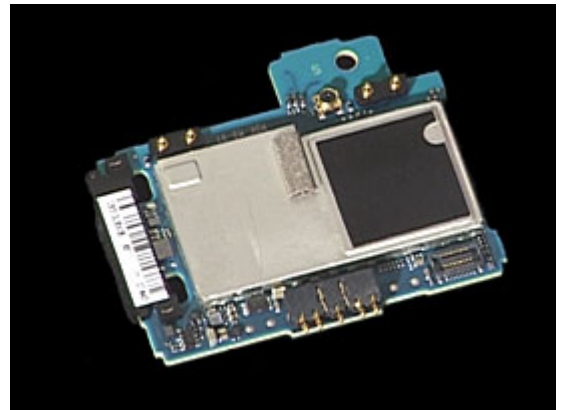
Use a Front open removal tool to remove the Shield Can Lid BB



Installation

Use your fingers to position a new Shield Can Lid BB

Follow the 4.1.6 – 4.1.8 Reassembly instructions!

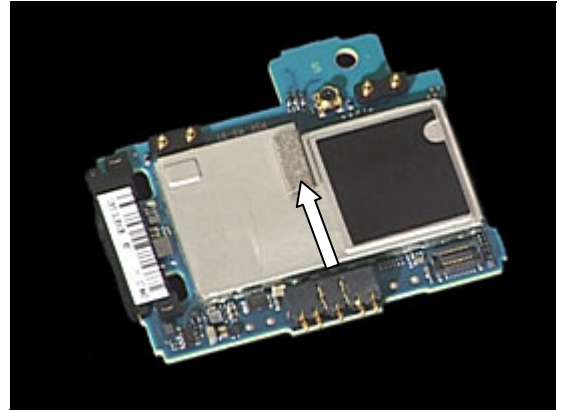


3.25 Gasket BB

Removal

Follow the 2.1.1 – 2.1.3 Disassembly instructions!

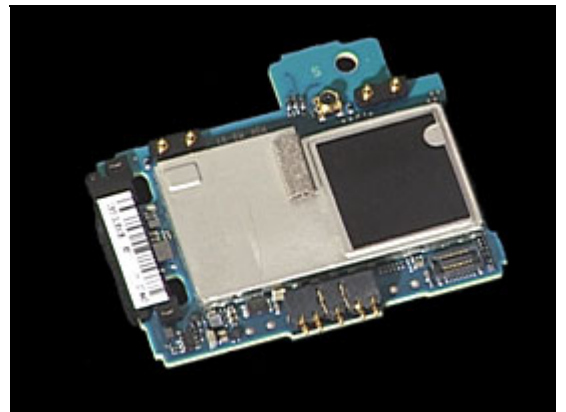
Use a dentist hook to remove the Gasket BB



Installation

Use a pair of tweezers to position a new Gasket BB

Follow the 4.1.6 – 4.1.8 Reassembly instructions!

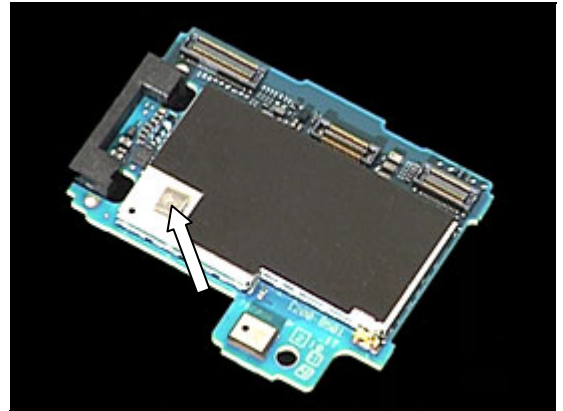


3.26 Gasket RF

Removal

Follow the 2.1.1 – 2.1.5 Disassembly instructions!

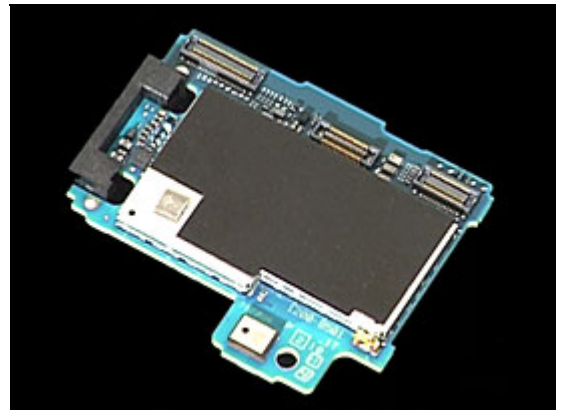
Use a dentist hook to remove the Gasket RF



Installation

Use a pair of tweezers to position a new Gasket RF

Follow the 4.1.4 – 4.1.8 Reassembly instructions!

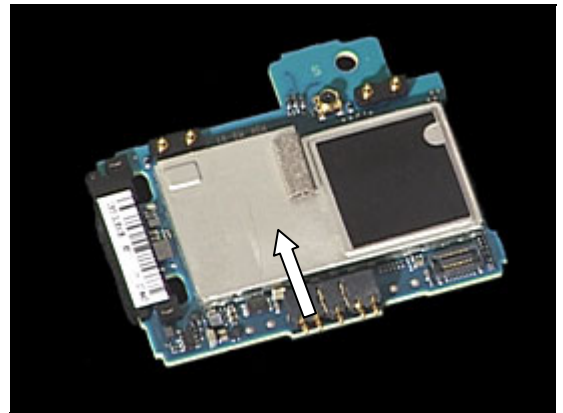


3.27 Sheet Isolation

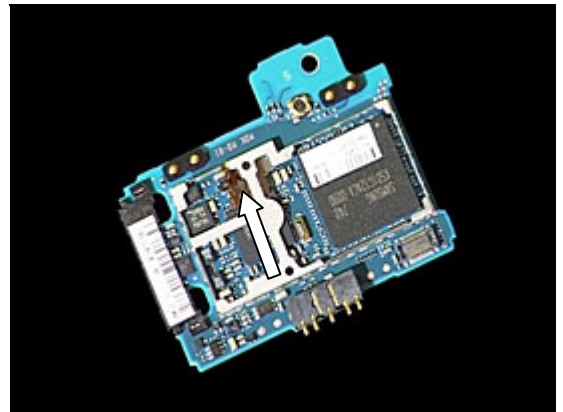
Removal

Follow the 2.1.1 – 2.1.5 Disassembly instructions!

Use a Front opening tool to remove the Shield Can Lid BB



Use a pair of tweezers to remove the Sheet Isolation



Installation

Use a pair of tweezers to position a new Sheet Isolation and
a use your fingers to position a new Shield Can Lid BB

Follow the 4.1.4 – 4.1.8 Reassembly instructions!

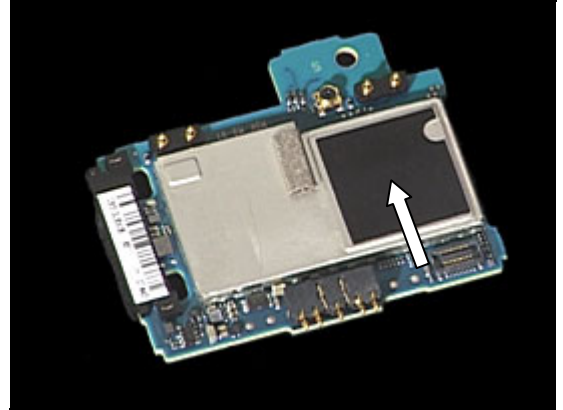


3.28 Sheet (Lid BB)

Removal

Follow the 2.1.1 – 2.1.3 Disassembly instructions!

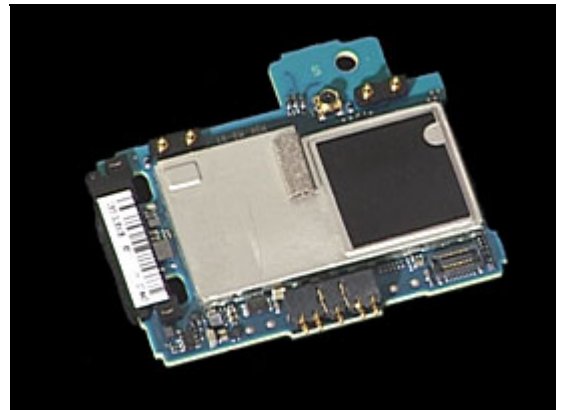
Use a dentist hook to remove the Sheet (Lid BB)



Installation

Use a pair of tweezers to position a new Sheet (Lid BB)

Follow the 4.1.4 – 4.1.8 Reassembly instructions!

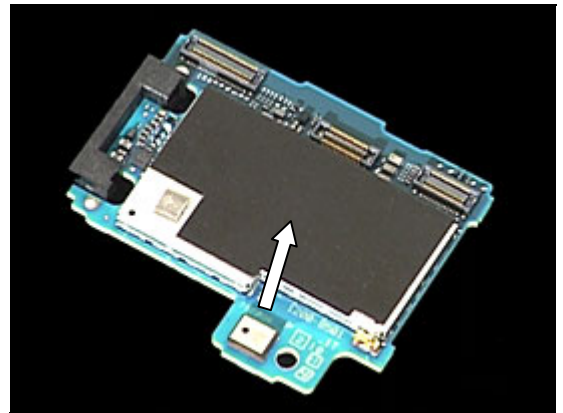


3.29 Sheet (Lid RF)

Removal

Follow the 2.1.1 – 2.1.5 Disassembly instructions!

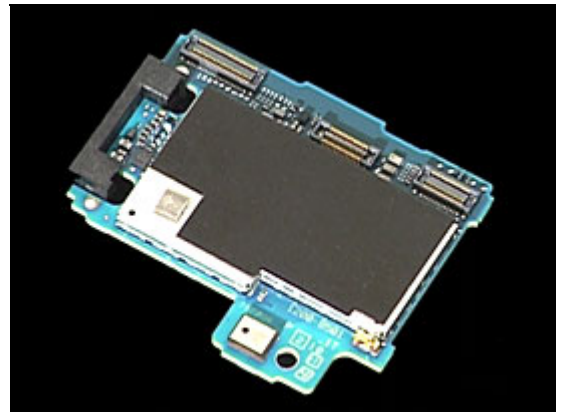
Use a dentist hook to remove the Sheet (Lid RF)



Installation

Use a pair of tweezers to position a new Sheet (Lid RF)

Follow the 4.1.4 – 4.1.8 Reassembly instructions!

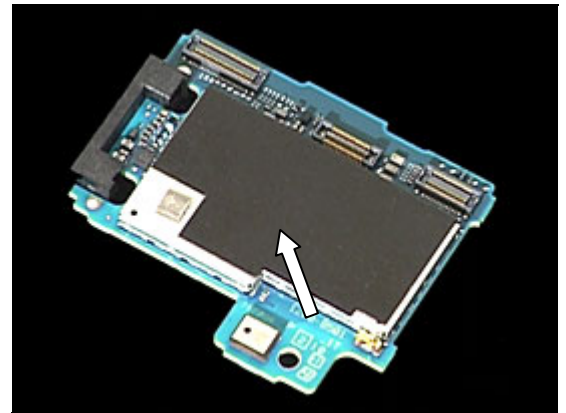


3.30 Sheet (GSM)

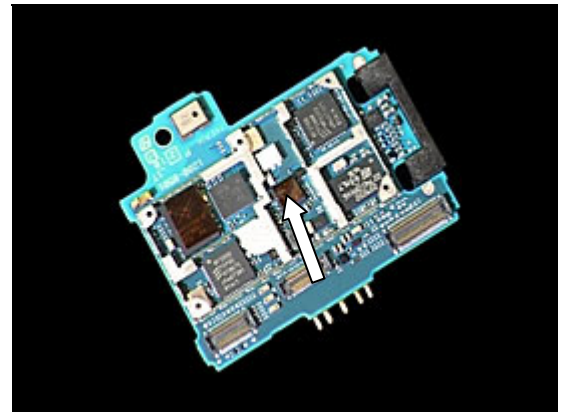
Removal

Follow the 2.1.1 – 2.1.5 Disassembly instructions!

Use a Front opening tool to remove the Shield Can Lid RF



Use a pair of tweezers to remove the Sheet (GSM)



Installation

Use a pair of tweezers to position a new Sheet (GSM) and a use your fingers to position a new Shield Can Lid RF

Follow the 4.1.4 – 4.1.8 Reassembly instructions!

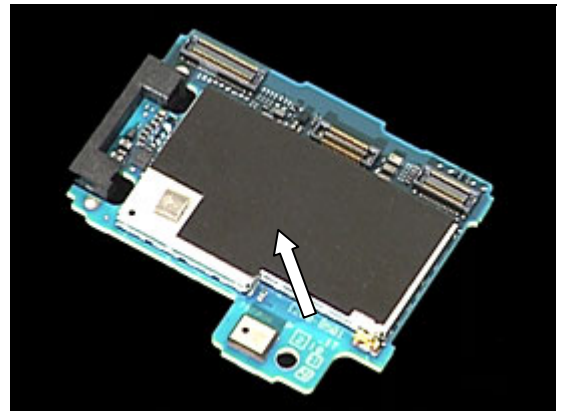


3.31 Sheet (UMTS)

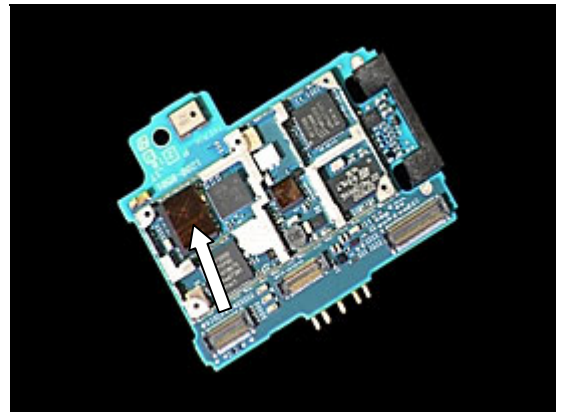
Removal

Follow the 2.1.1 – 2.1.5 Disassembly instructions!

Use a Front opening tool to remove the Shield Can Lid RF



Use a pair of tweezers to remove the Sheet (UMTS)



Installation

Use a pair of tweezers to position a new Sheet (UMTS) and a use your fingers to position a new Shield Can Lid RF

Follow the 4.1.4 – 4.1.8 Reassembly instructions!



3.32 Spacer (LCD_conn)

Removal

Follow the 2.1.1 – 2.1.7 Disassembly instructions!

Use a dentist hook to remove the Spacer (LCD_conn)



Installation

Use a pair of tweezers to position a new Spacer (LCD_conn)

Follow the 4.1.2 – 4.1.8 Reassembly instructions!

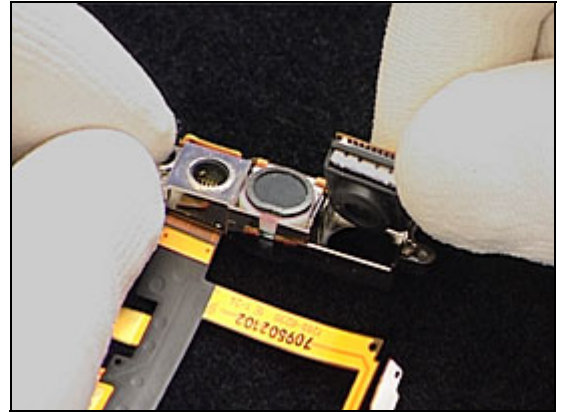


3.33 Camera 3Mpixel CMOS

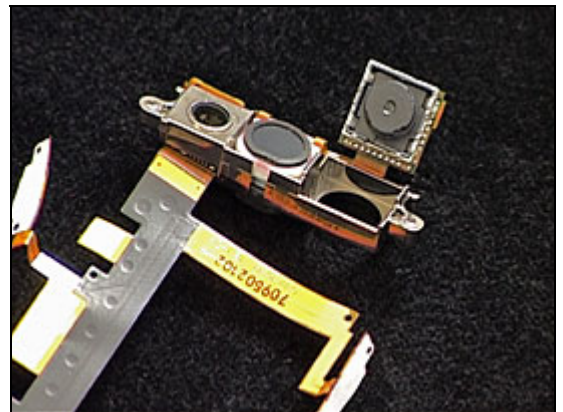
Removal

Follow the 2.1.1 – 2.1.6 Disassembly instructions!

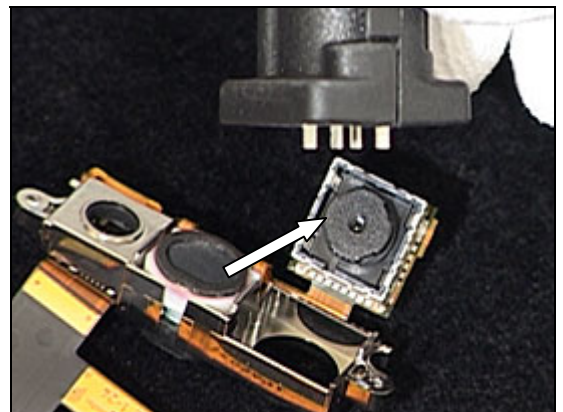
Use your fingers to remove the Camera 3MPixel CMOS from the Frame Sub Camera Assembly



Use your fingers to remove the Cap GrommetF from the Camera 3Mpixel CMOS

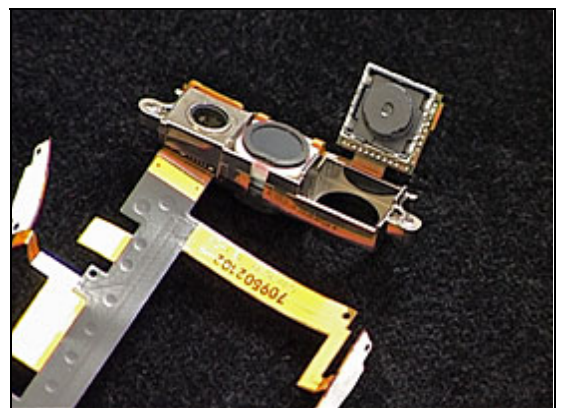


Use a Camera Removal Tool 3Mpixel to remove the Camera 3Mpixel CMOS



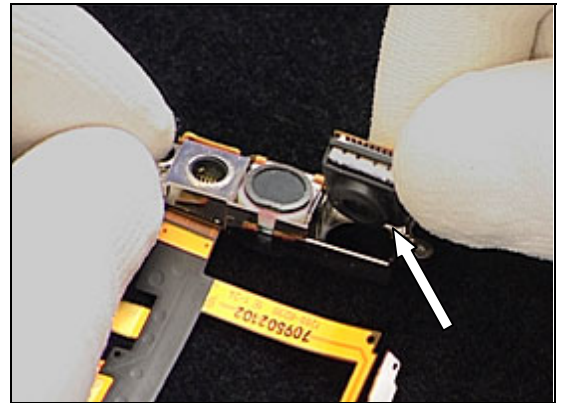
Installation

Use your fingers to attach the Camera 3MPixel CMOS



Use your fingers to attach the Cap GrommetF to the Camera 3Mpixel CMOS

Follow the 4.1.3 – 4.1.8 Reassembly instructions!

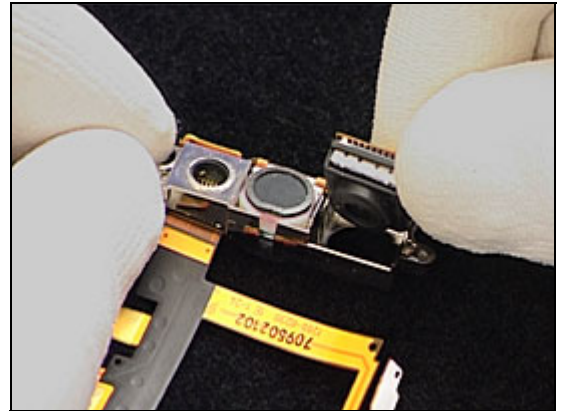


3.34 Cap Grommet CamR

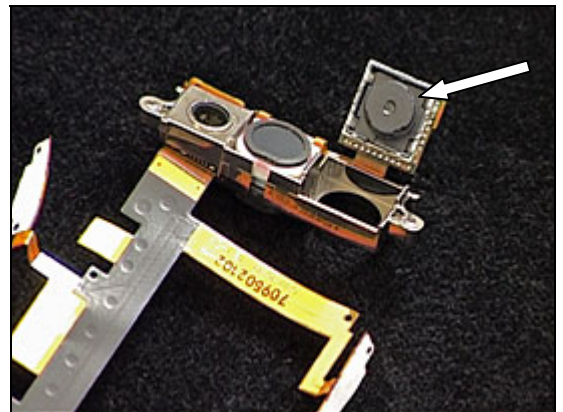
Removal

Follow the 2.1.1 – 2.1.6 Disassembly instructions!

Use your fingers to remove the Camera 3MPixel CMOS from the Frame Sub Camera Assembly

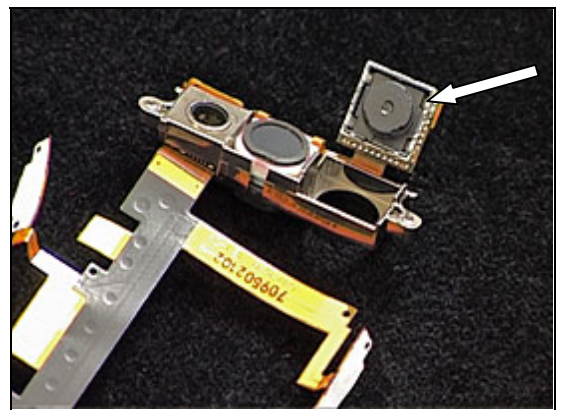


Use your fingers to remove the Cap GrommetR from the Camera 3Mpixel CMOS



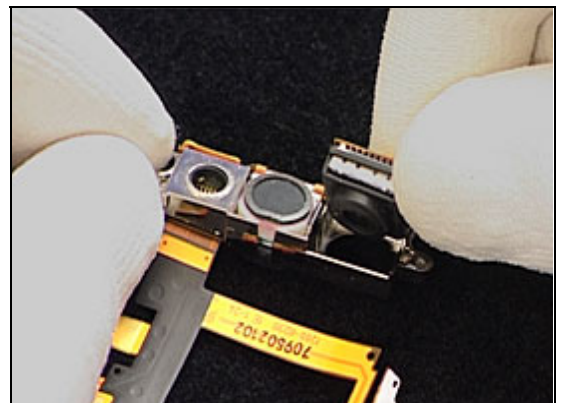
Installation

Use your fingers to position the Cap GrommetR on the Camera 3Mpixel CMOS



Use your fingers to position the camera in the Frame Sub Camera Assembly

Follow the 4.1.3 – 4.1.8 Reassembly instructions!



3.35 Frame Sub Assembly Camera

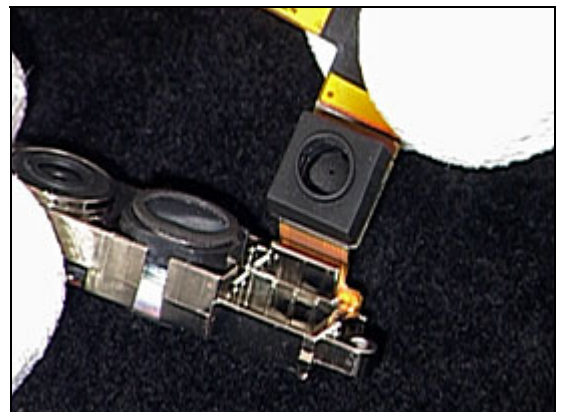
Removal

Follow the 2.1.1 – 2.1.6 Disassembly instructions!

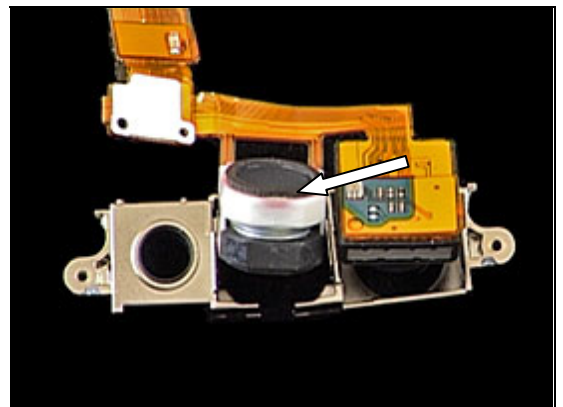
Use your fingers to remove the Camera 3MPixel CMOS from the Frame Sub Camera Assembly



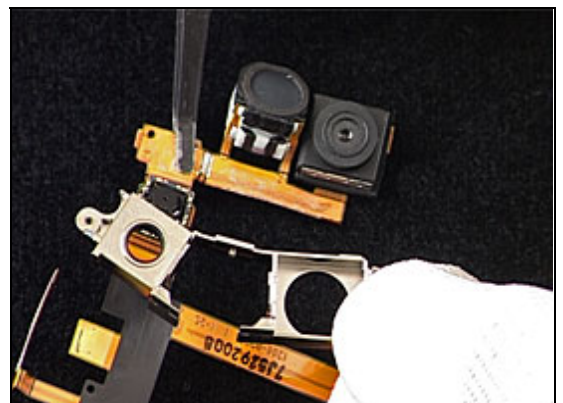
Use your fingers to remove the QCIF VGA Camera from the Frame Sub Camera Assembly



Use your fingers to remove the receiver from the Frame Sub Camera Assembly



Use a Flex Film Assembly Tool to remove the Camera Flex Module from the Frame Sub Camera Assembly

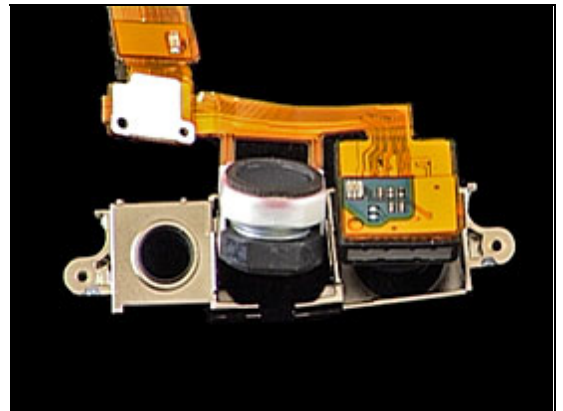


Installation

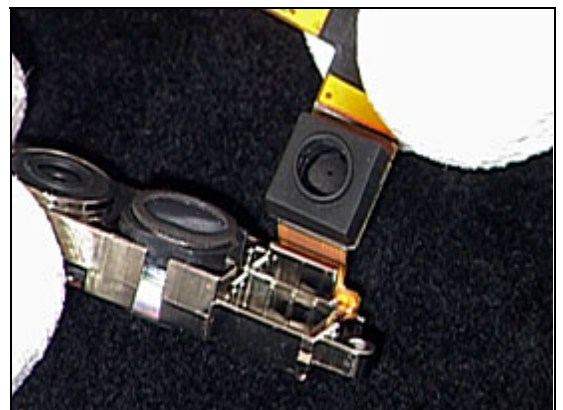
Use a Flex Film Assembly Tool to attach the Camera Flex Module to the Frame Sub Camera Assembly



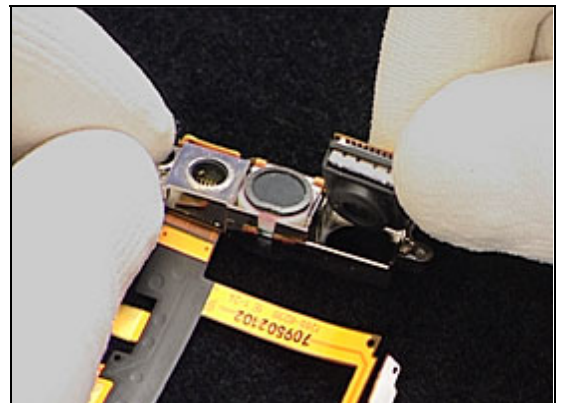
Use your fingers to attach the receiver to the Frame Sub Camera Assembly



Use your fingers to position the QCIF Camera VGA to the Frame Sub Camera Assembly



Use your fingers to position the Camera 3MPixel CMOS to the Frame Sub Camera Assembly



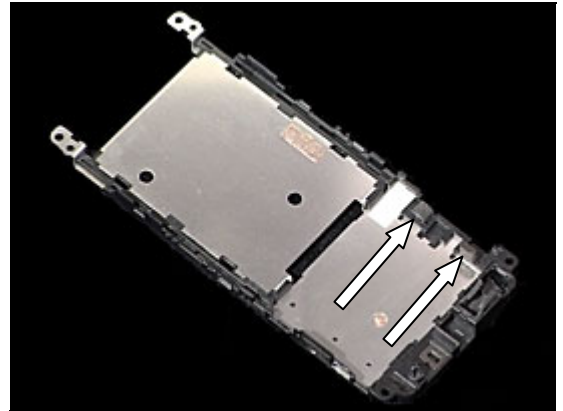
Follow the 4.1.3 – 4.1.8 Reassembly instructions!

3.36 Cushion 0.0 mm (System conn)

Removal

Follow the 2.1.1 – 2.1.5 Disassembly instructions!

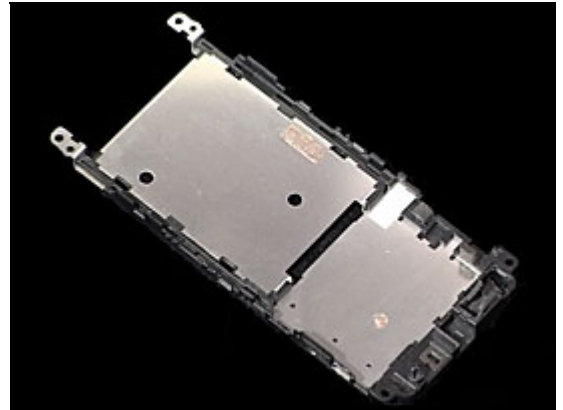
Use a dentist hook to remove the Cushion 0.0 mm (System conn)



Installation

Use a pair of tweezers to position new Cushion 0.0 mm (System conn)

Follow the 4.1.4 – 4.1.8 Reassembly instructions!



3.37 Liquid Intrusion Indicator

Removal

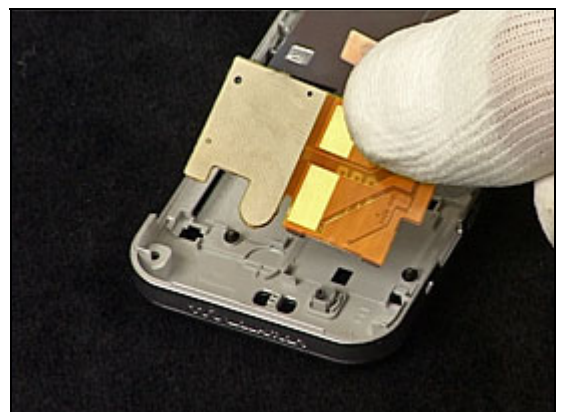
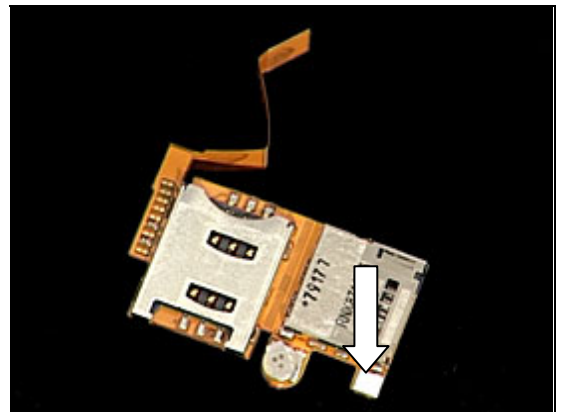
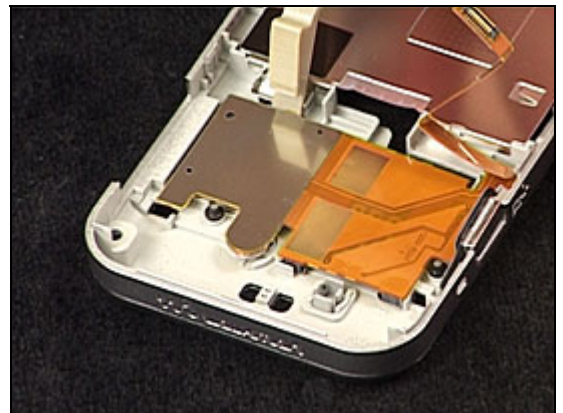
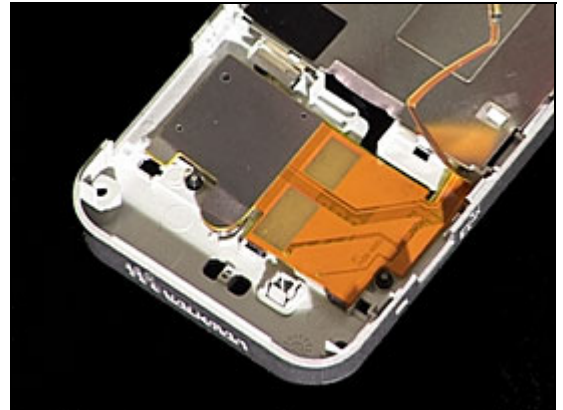
Follow the 2.1.1 – 2.1.3 Disassembly instructions!

Use a Front Opening Tool to remove the SIM/M2 flex module

Use a pair of tweezers to replace the Liquid Intrusion Indicator

Installation

Use your fingers to position the SIM/M2 flex module



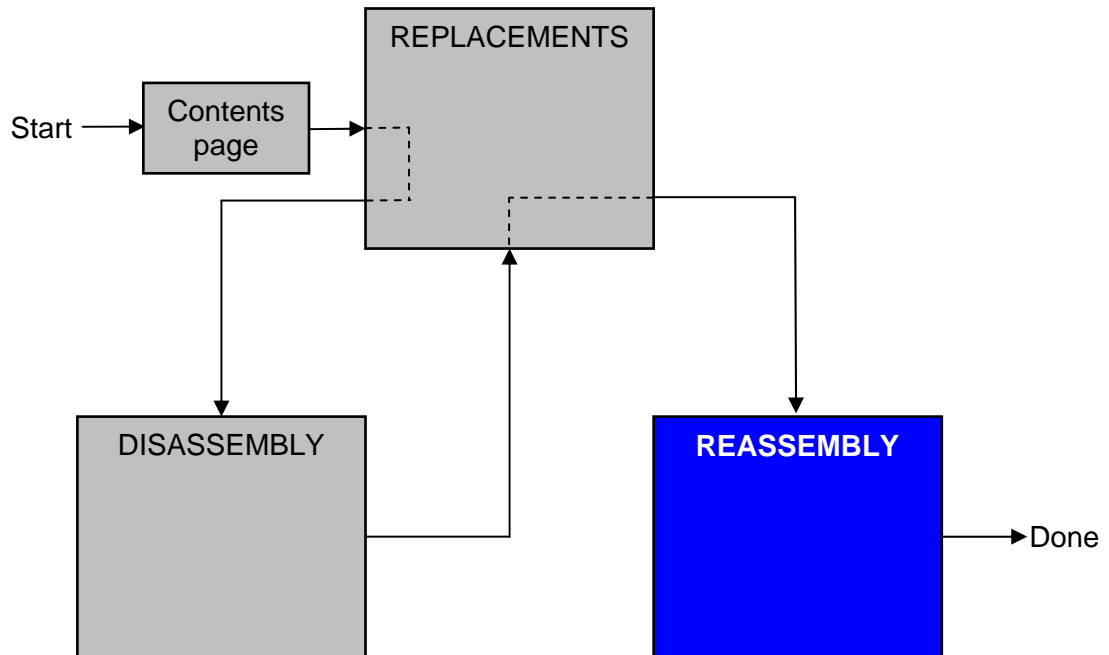
Use your fingers to attach the SIM/M2 flex module

Follow the 4.1.6 – 4.1.8 Reassembly instructions!



4 Reassembly

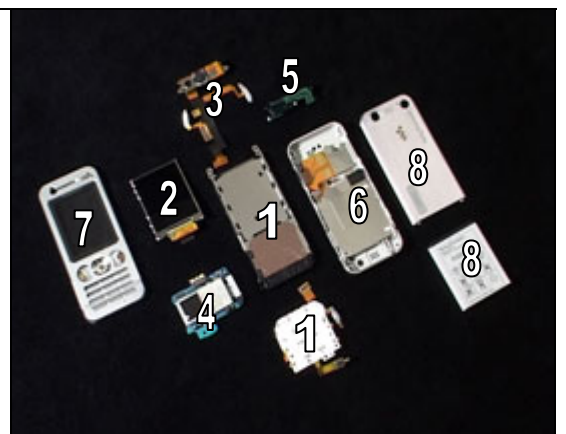
After replacing a part being listed in Replacements, the instruction of that section usually ends by directing you to this Reassembly section with a specification of the instructions you have to carry out in order to reassemble the phone.



4.1 Overview

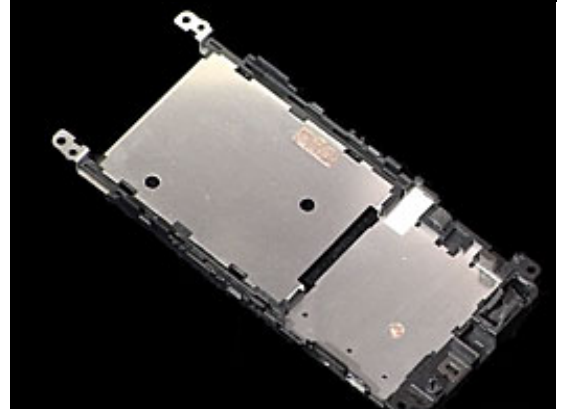
The reassembly is done in the following sequence:

1. Frame Sub Assembly PWB and Key Flex Assembly
2. Display 2,02A-SI TFT
3. Camera Flex Module
4. Main PWB
5. Ant Main PIFA
6. Rear Cover Assembly
7. Front Cover Assembly Complete
8. Battery & Battery Cover

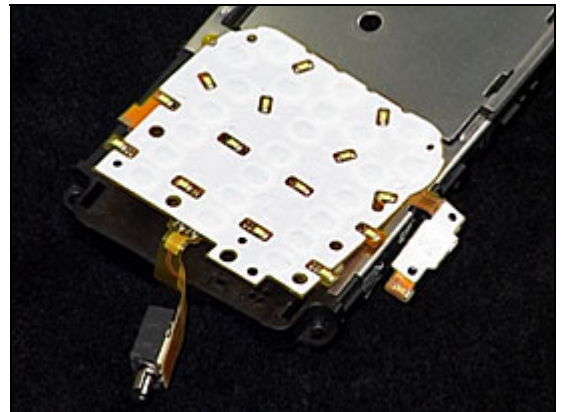


4.1.1 Frame Sub Assembly PWB and Key Flex Module

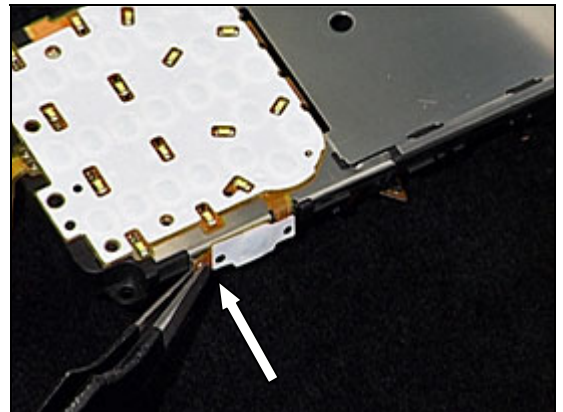
Take the Frame Sub Assembly PWB



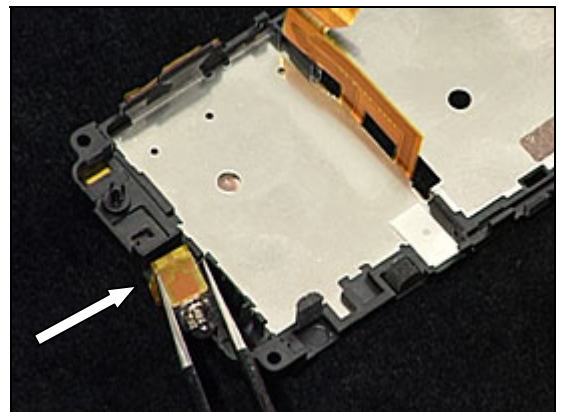
Use your fingers to attach the Key Flex Module



Use a Flex film assembly tool to attach the camera pad

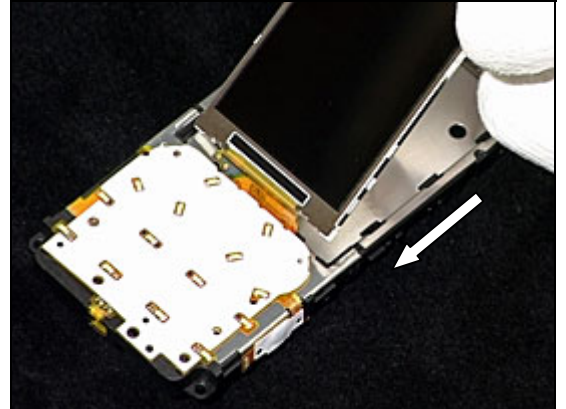


Use a pair of tweezers to attach the vibrator

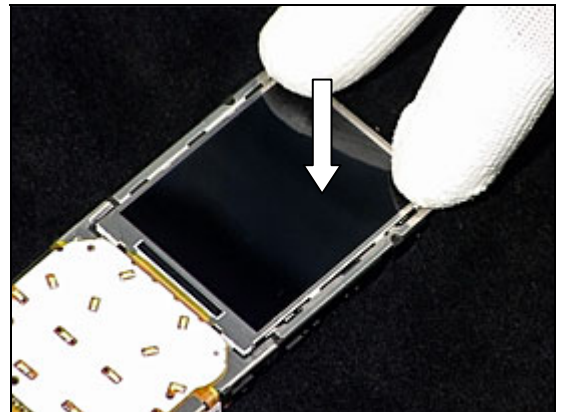


4.1.2 Display 2,02A-SI TFT

Use your fingers to position the display

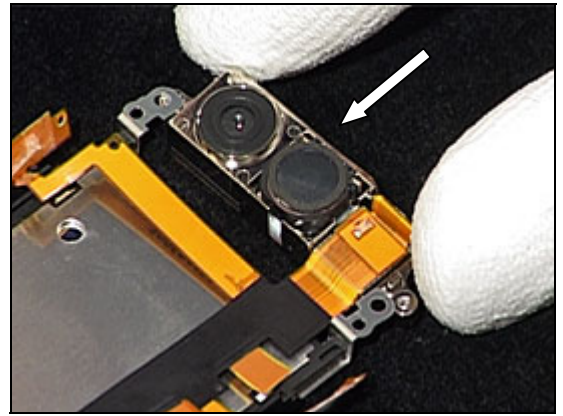


Use your fingers to snap on the display



4.1.3 Camera Flex Module

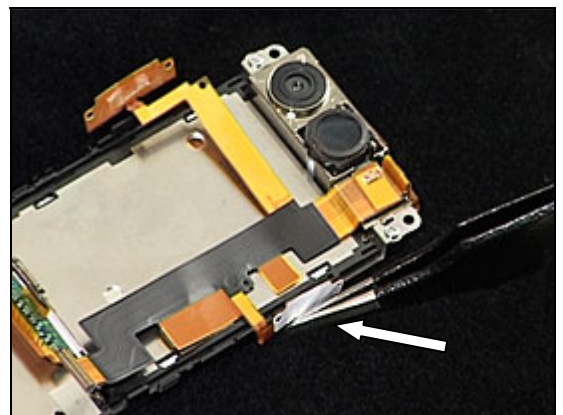
Use your fingers to position the camera flex assembly



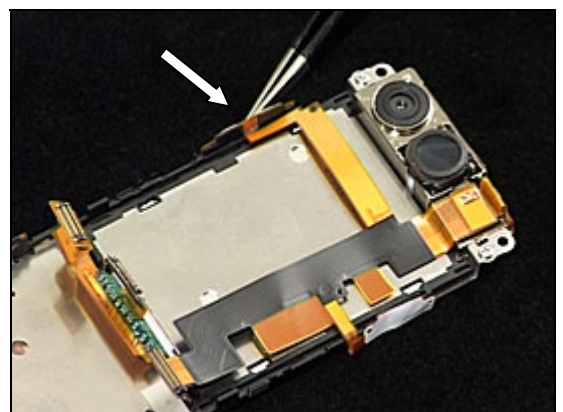
Insert and tighten the two screws (JCIS No.0 8Ncm).



Use a Flex film assembly tool to attach the music pad

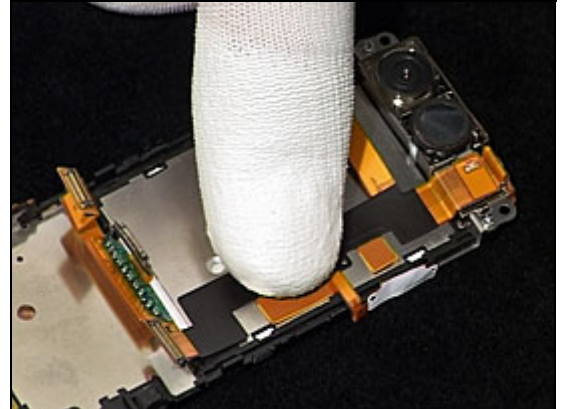


Use a Flex film assembly tool to attach the volume pad



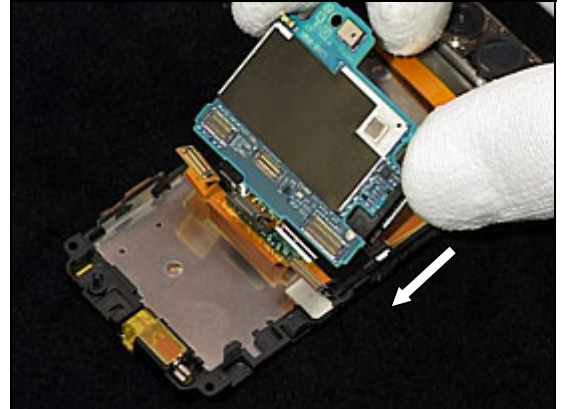
Disassembly Instruction *continued*

Use your fingers to attach the camera flex module

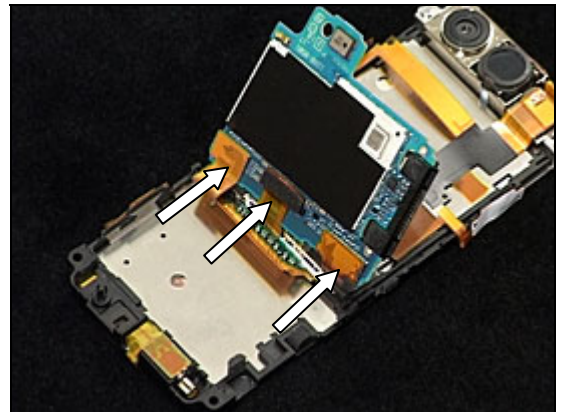


4.1.4 Main PWB

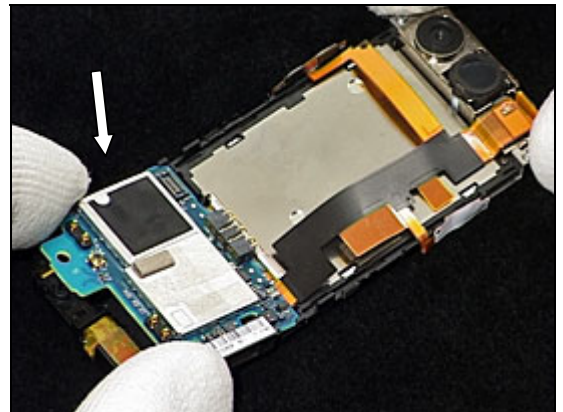
Use your fingers to position the Main PWB



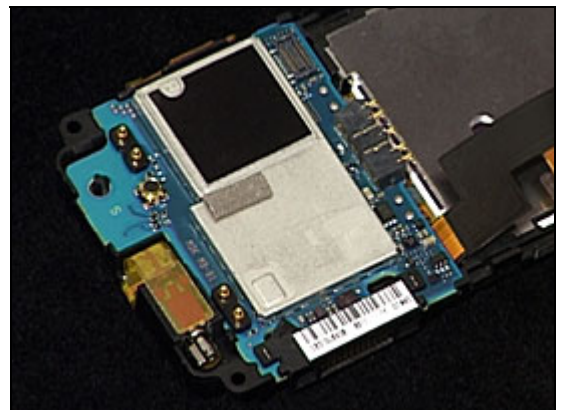
Use your fingers to connect the three BtB connectors with the Main PWB



Use your fingers to position the Main PWB

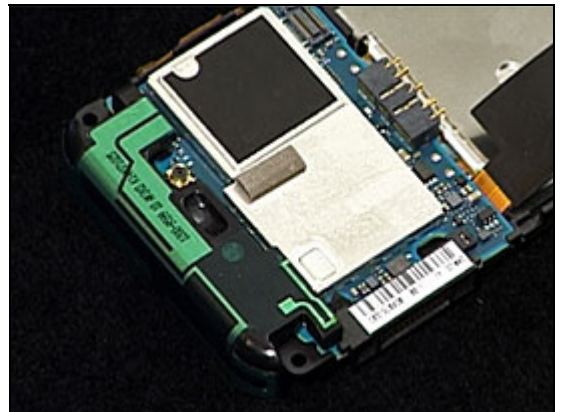
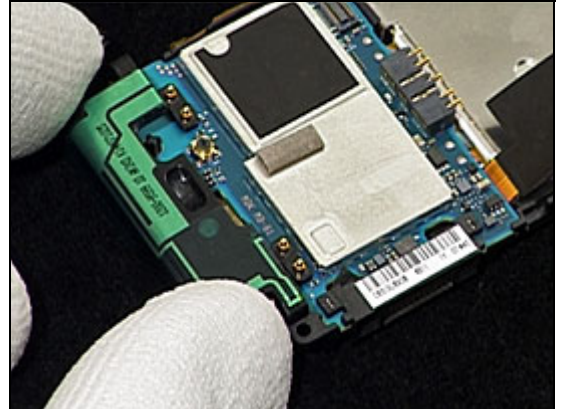


Use your fingers to snap on the Main PWB



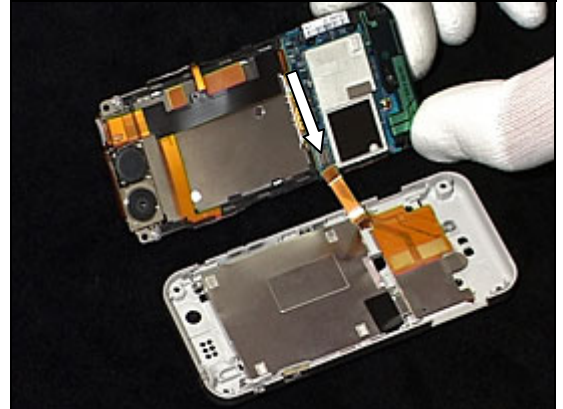
4.1.5 Ant Main PIFA

Use your fingers to snap on the Antenna Main PIFA

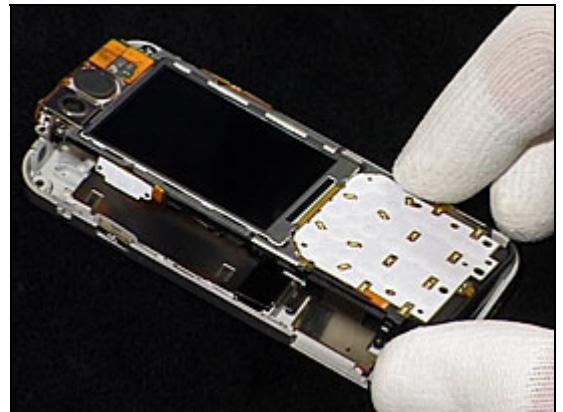


4.1.6 Rear Cover Assembly

Use your fingers to attach the connector on the Rear Cover Assembly with the BtB connector on the Main PWB



Use your fingers to position the Rear cover assembly



Use your fingers to attach the Rear cover assembly



4.1.7 Front Cover Assembly Complete

Use your finger to position the Front Cover Assembly Complete



Use your fingers to snap on the Front Cover Assembly Complete



Insert and tighten the four screws (Torx T6 18Ncm).



Use your fingers to position the two screw caps



4.1.8 Battery & Battery Cover

Use your fingers to attach the battery



Put on the battery cover



Use your fingers to lock the two locks on the side of the phone.



5 Revision history

Rev.	Date	Changes / Comments
1	2008-02-20	Initial release
2	2008-03-27	Changes in Chapter 3.22 and 3.28