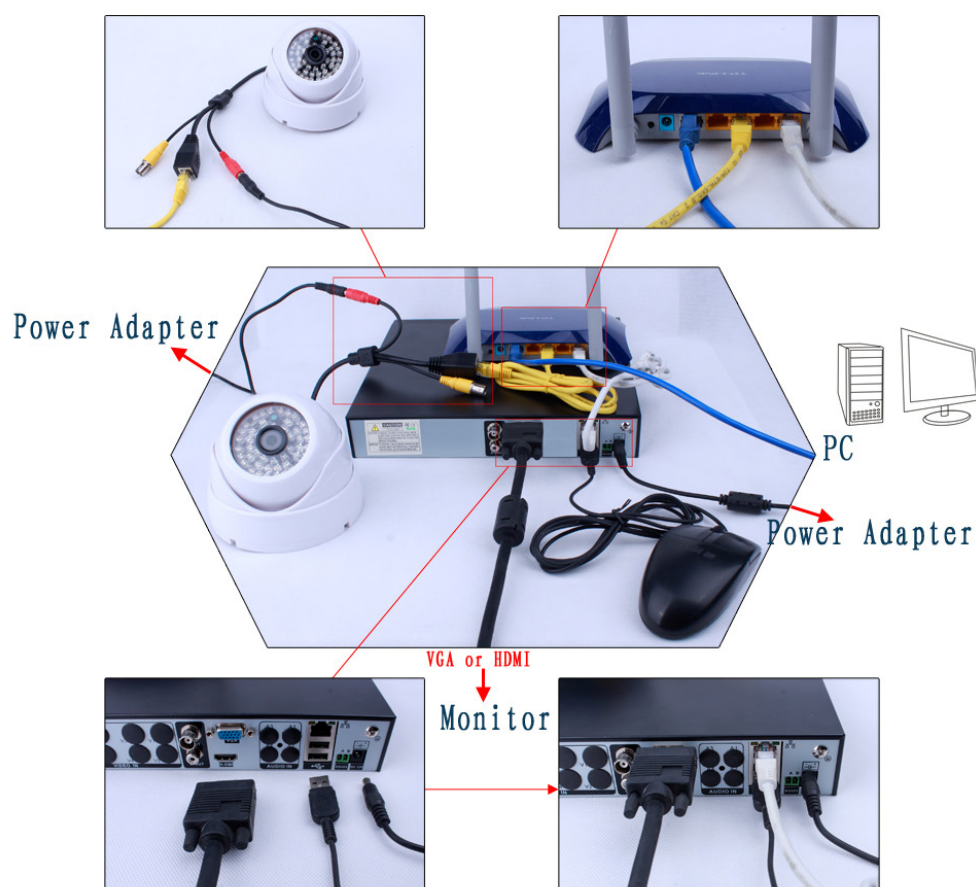
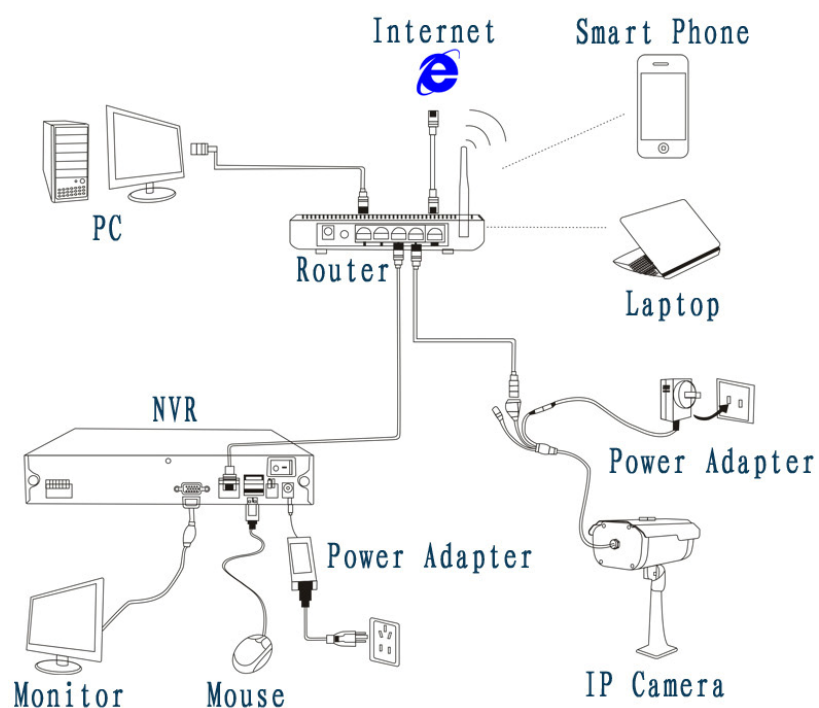


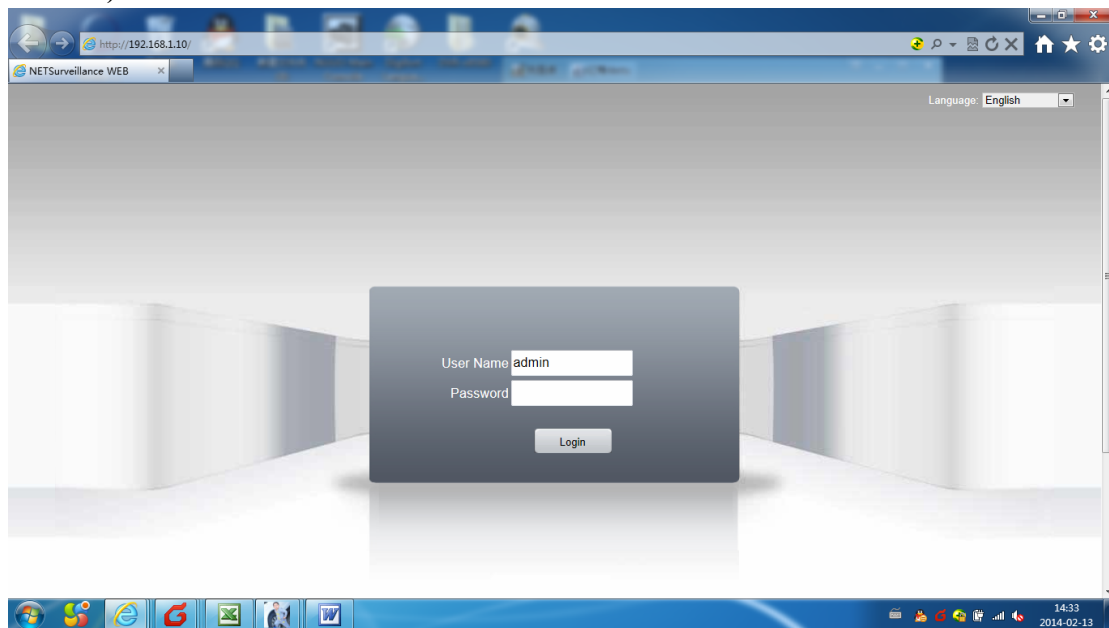
NVR System Connection Step

► Full-set NVR System

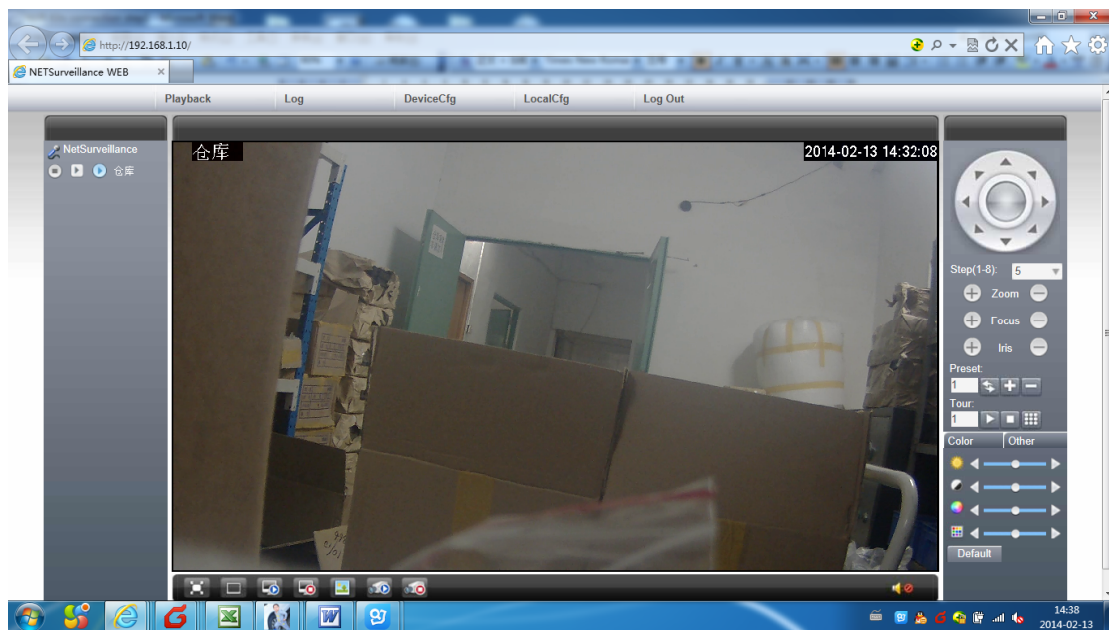


1, WIFI Setting on Cam

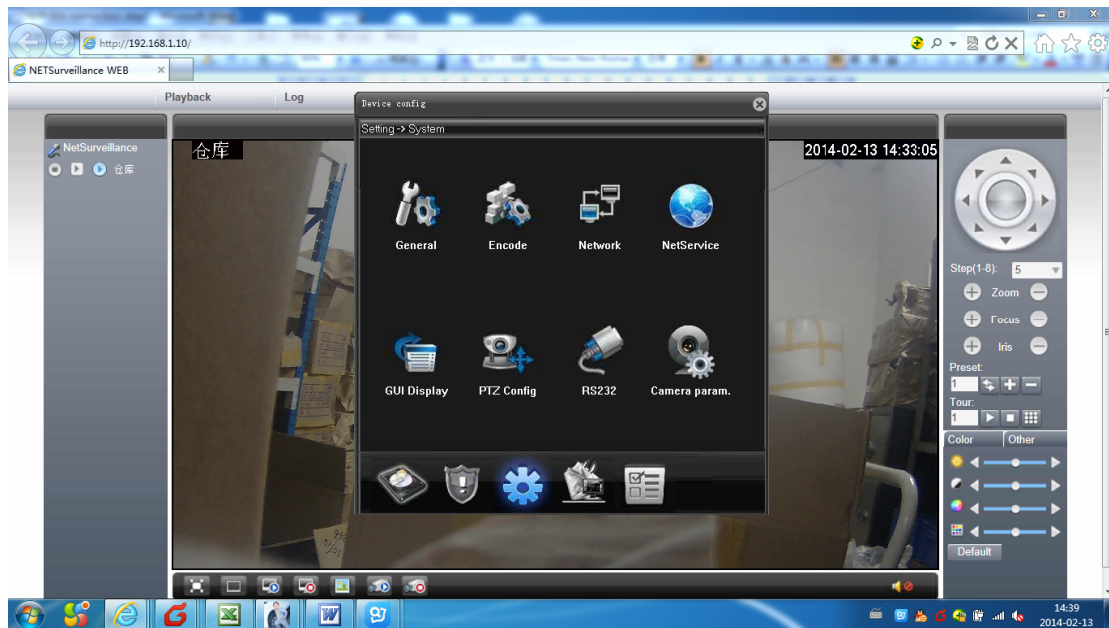
a), Connect cat5/6 cable to ip camera, then login ip camera via PC connect to LAN(local area network).



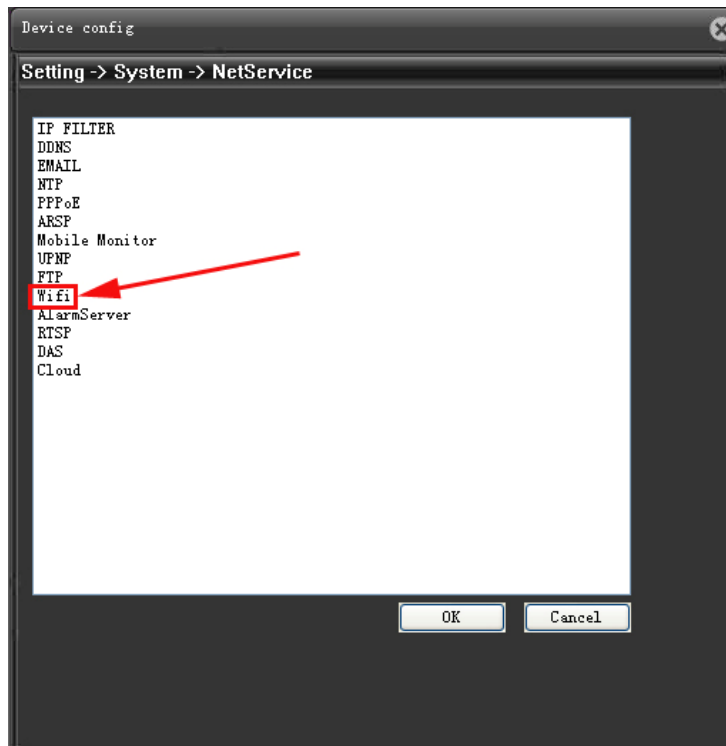
b), Please login the system via IE browser



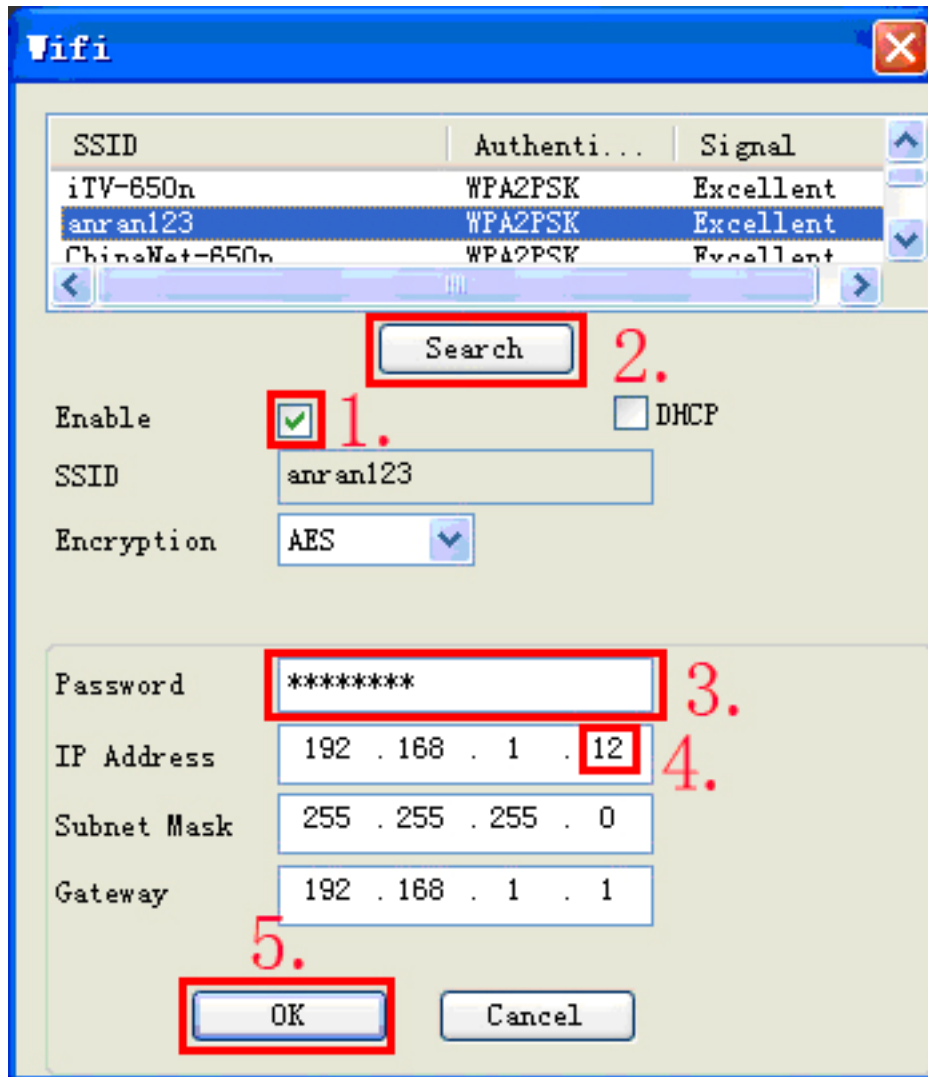
c), Device config--Setting--Netservice



d), click “wifi”



e), Please search your wifi router, so you can find the name of your router. Then select the correct the router, enter the correct password of the wifi router (please note the password can't be set over 11 characters, and pay attention to capital and small letter, and don't enter the special characters like as “@ # \$ % & / !”)



f), click "ok" to save the setting

Then please disconnect the Cat5/6 cable and power supply, wait 1-2 minutes, and then reconnect power supply, ip camera should be work by wifi; Please login the ip camera via PC browser. If you can login success, so the wifi setting is ok.

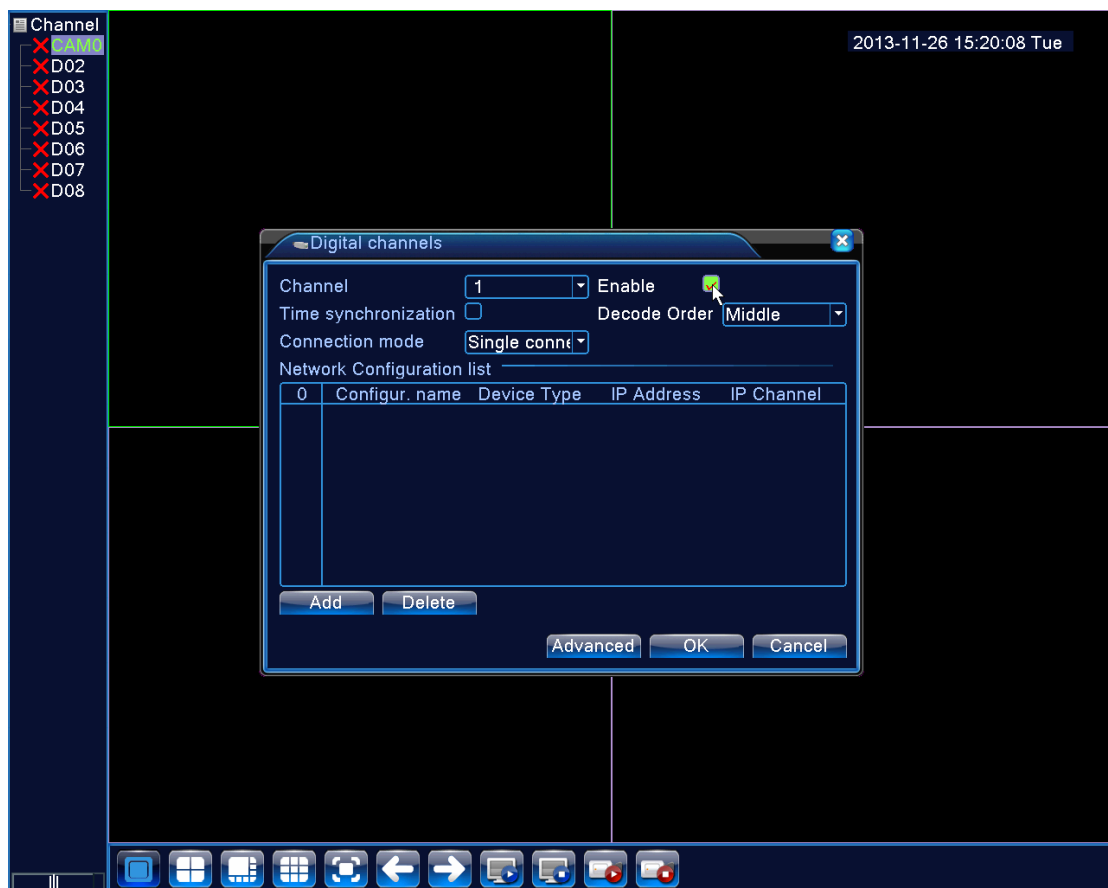
(Note: please setup the ip address different if you have many ip cameras, eg. one is setting for 192.168.1.10, In order to avoid the conflict between wired IP address and WIFI IP address, we can revise the ip address to 192.168.1.11)

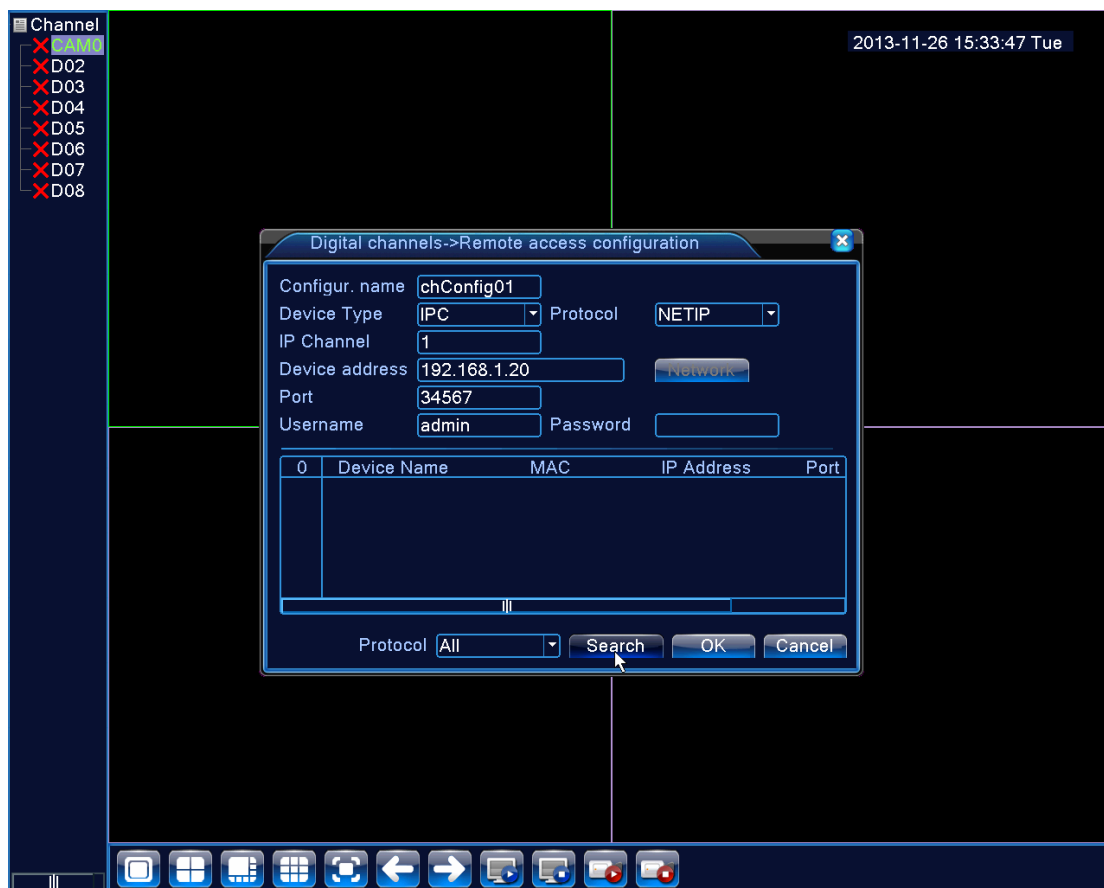
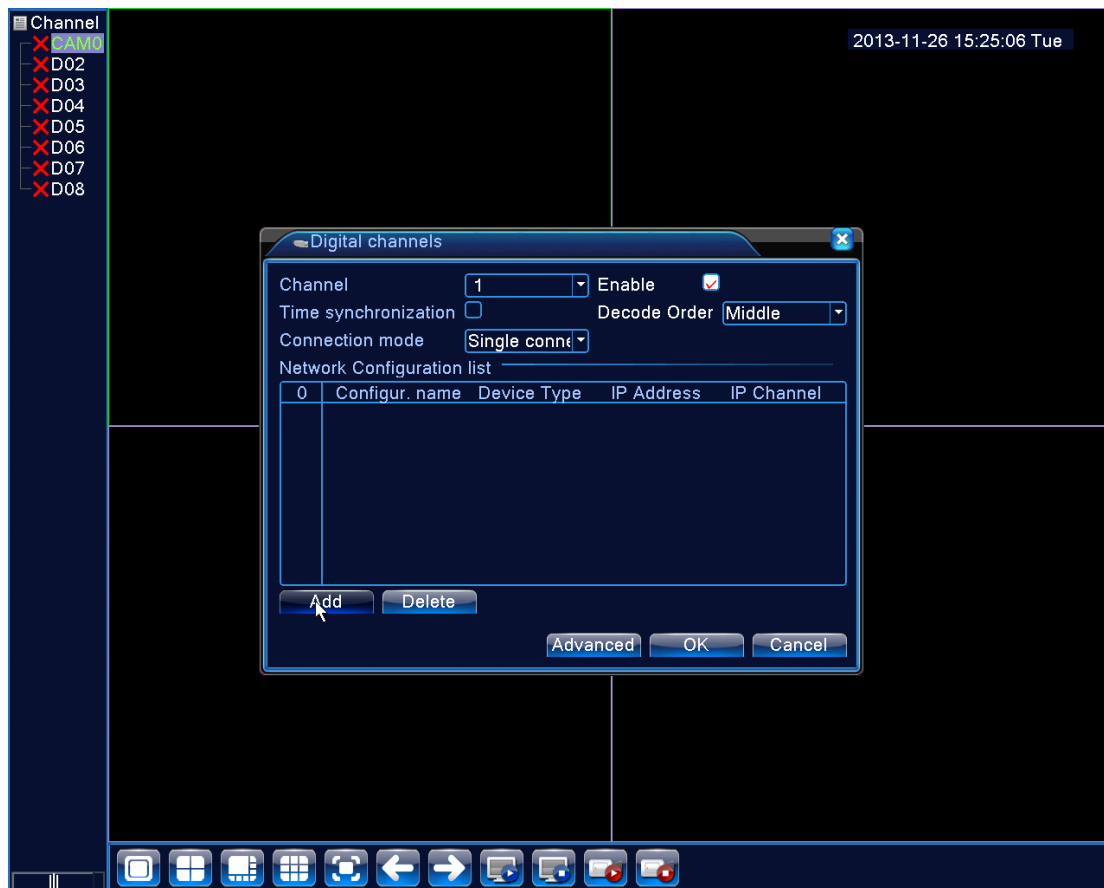
The first camera ip address is 192.168.1.10 / 192.168.1.11;

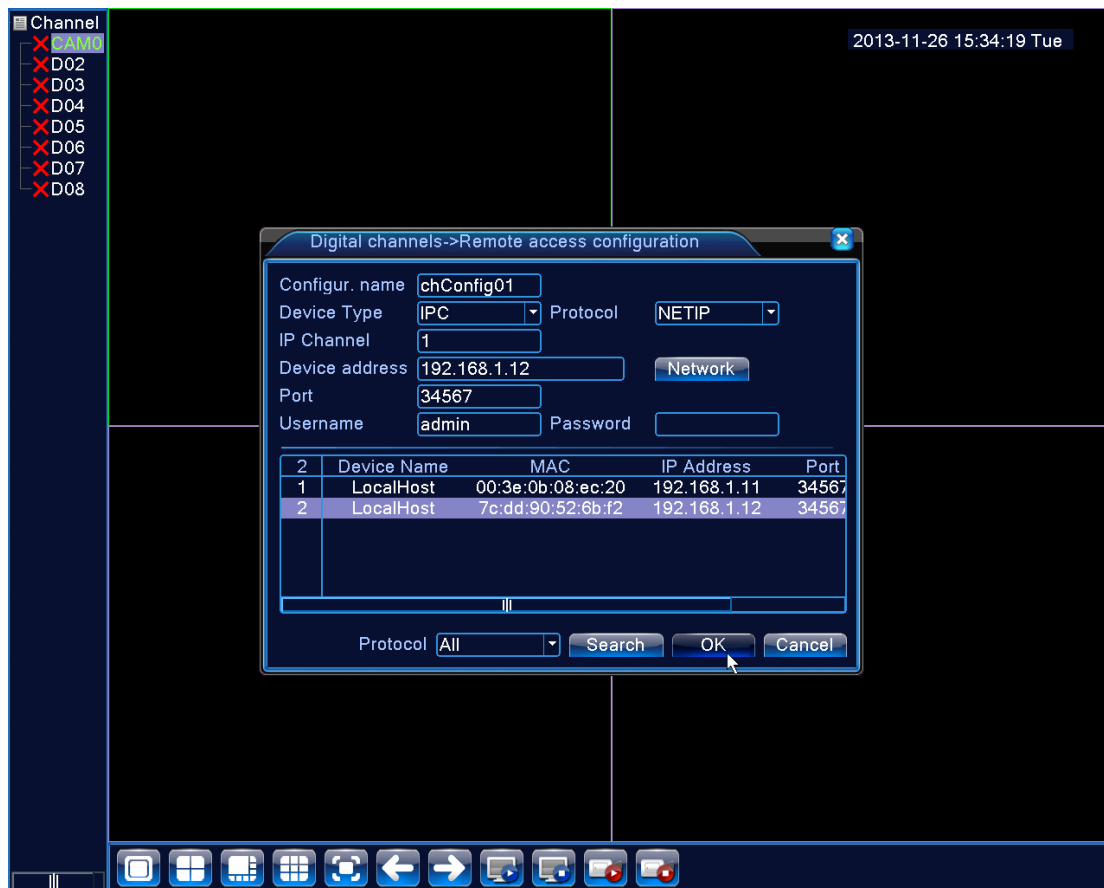
The second camera's ip address may be set for 192.168.1.20 / 192.168.1.21

The third camera's ip address can be set for 192.168.1.30 / 192.168.1.31

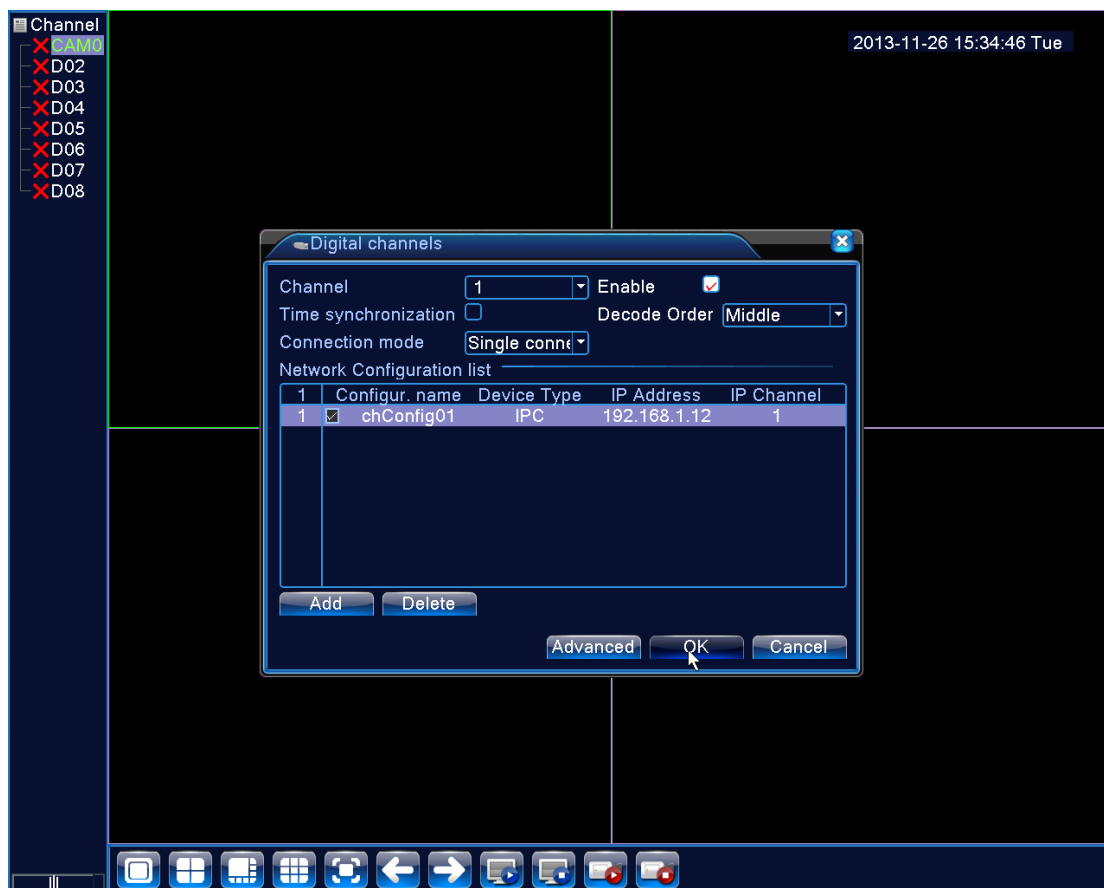
The fourth.....







Please double click the ip address which one you need select for the camera



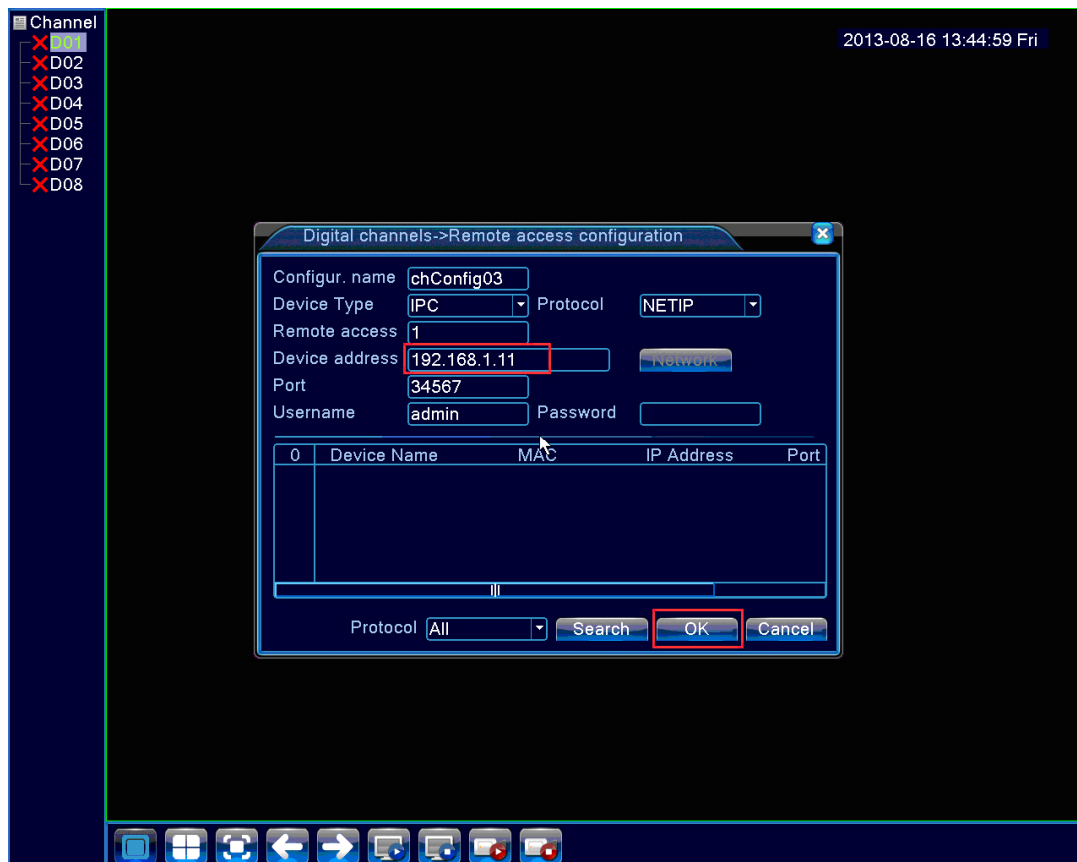
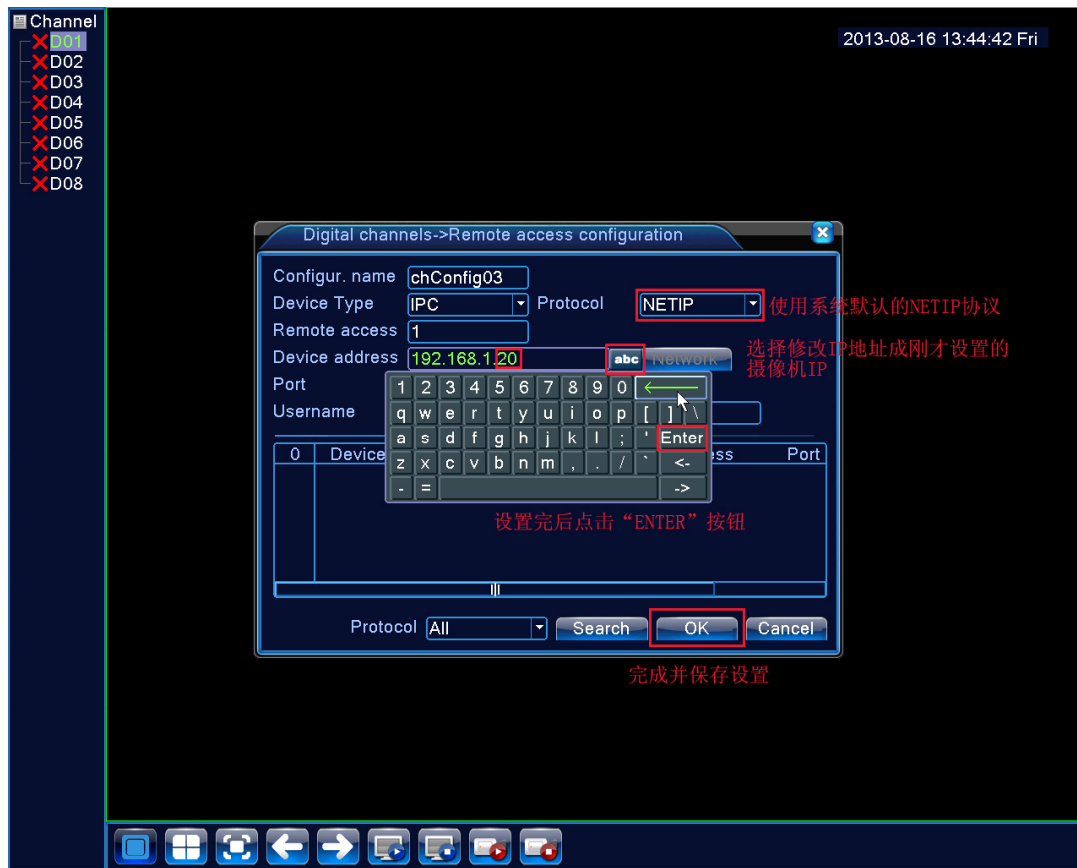
b. please manual add ip address of cam, such as 192.168.1.11, click “ENTER” -- “Ok”



You may double click the channel, the setting is finished.

(2),

If you can't search the wifi ip camera auto, you can add the camera and enter the ip address by manual. like as below pic:



c, then you may add the second, third, fourth ... Cameras on NVR