

## How to upgrade firmware for Indoor PT camera

Suitable for MJPG camera: FI8910W, FI8910E, FI8916W, FI8918W, FI8918E.

**After upgrading, please clear the cache of browser firstly, then open the browser again to log-in the camera;**

Please check the model number and current firmware version before upgrading. You can find your model number on the bottom sticker and your firmware version under Device Status menu.

The firmware 11.22.2.xx **cannot** upgrade to this version.

The firmware 11.37.2.xx **can** upgrade to this version.

Updating with wrong firmware could severely damage and/or break your camera, please make sure the firmware is correct and update at your own risk.

**Note:** After upgrading to this version, it cannot downgrade to previous versions.

### Preparation for upgrading:

- 1) Please restart your camera before the upgrading;
- 2) Plug in the Ethernet cable to upgrade firmware, not via wireless;
- 3) Upgrade the system firmware firstly and web UI secondly;
- 4) Keep power on during the upgrading.

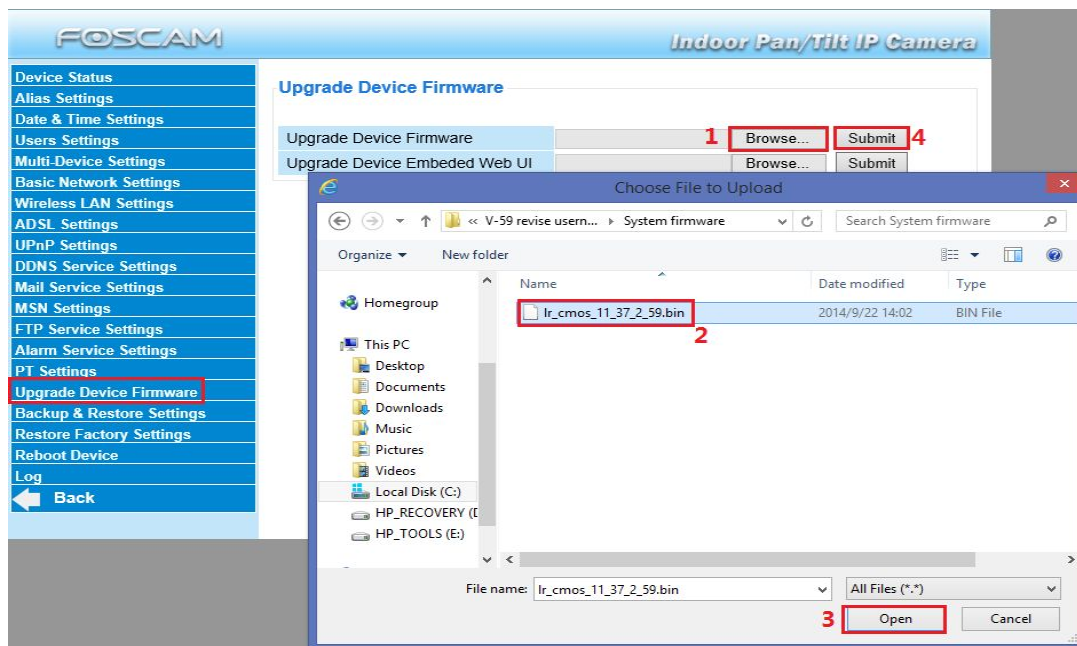
### Method 1: Update firmware on Web UI.

**Step 1:** Log into camera as administrator, go to **Device Management** → **Upgrade Device Firmware**.

**Step 2:** Update System firmware firstly.

Click **Browse** → select system firmware **lr\_cmos\_11\_37\_2\_59.bin** → click **Open** → click **Submit**. After camera restarting itself, the system firmware is loaded successfully.

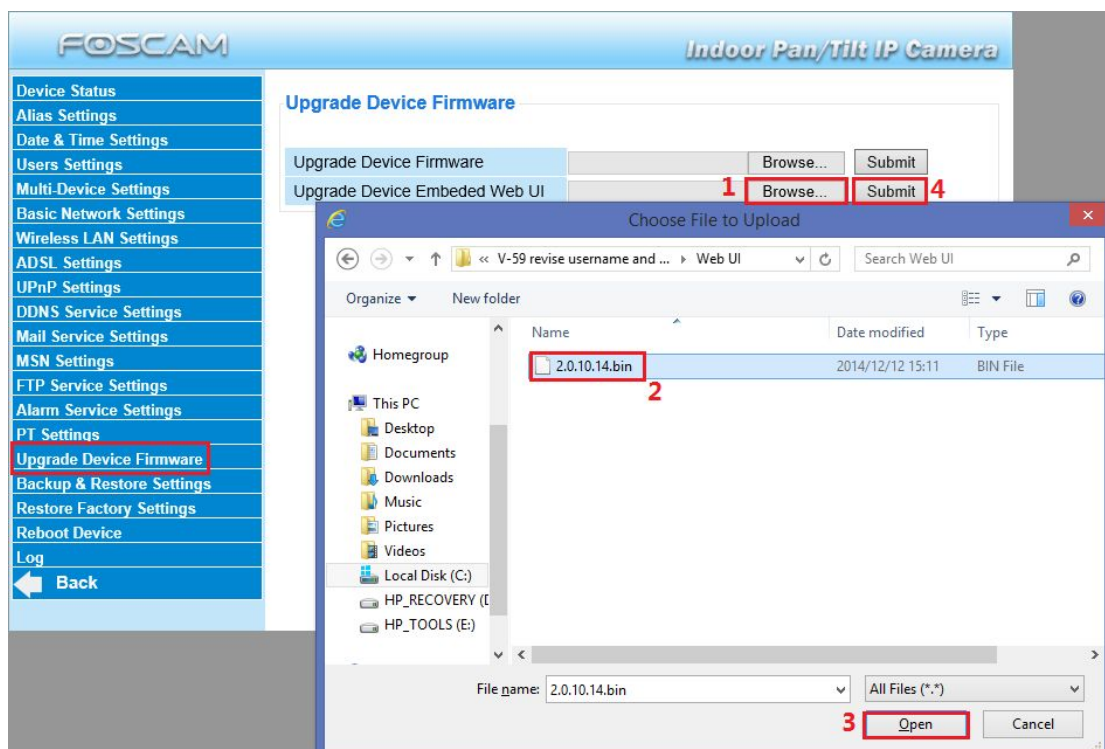
**Note:** Do not shut down the power of the camera before IP Camera Tool search the IP again!



**Step 3:** Update Web UI firmware secondly.

Click **Browse** → select Web UI firmware **2.0.10.14.bin** → click **Open** → click **Submit**.  
After camera restarting itself, the Web UI is loaded successfully.

**Note:** Do not shut down the power of the camera before IP Camera Tool search the IP again!



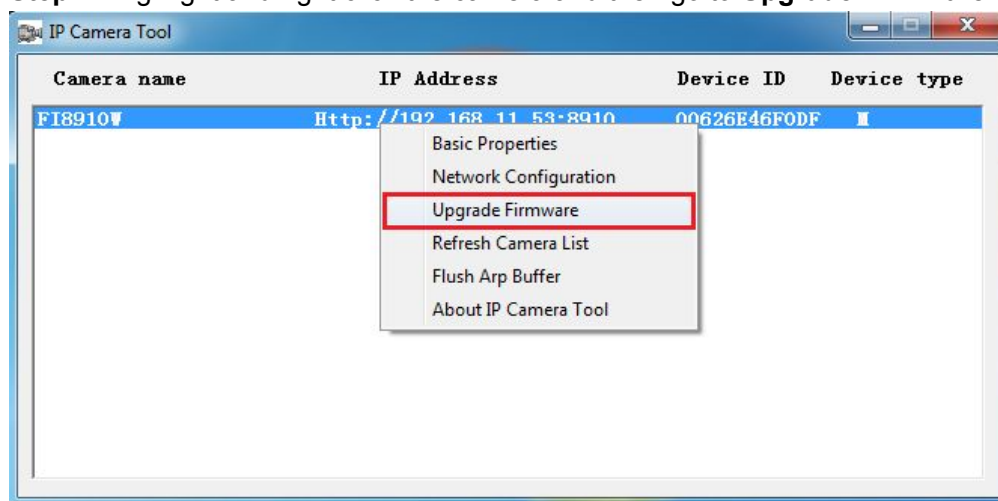
**Step 4:** You can check new firmware versions under **Device Status** page.

### Device Status

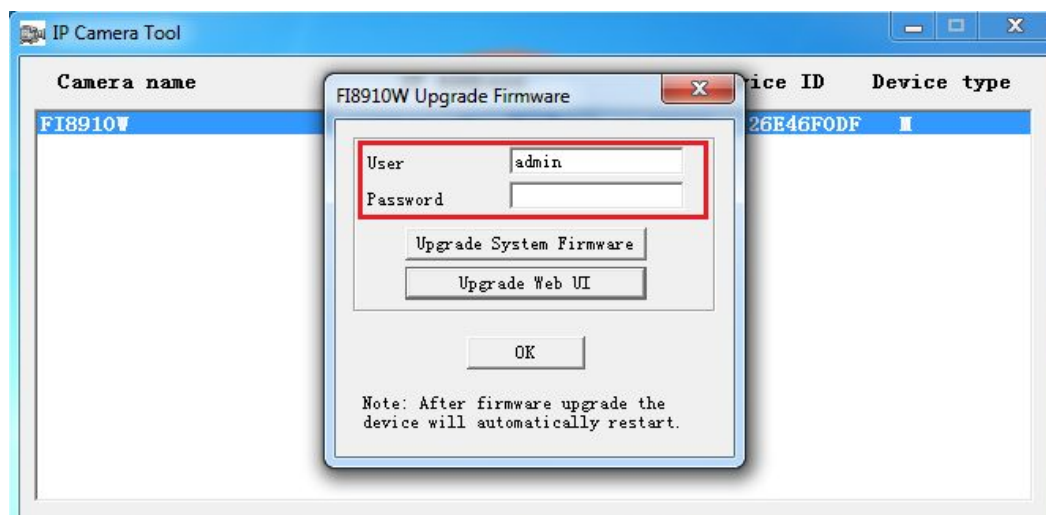
Device ID	00626E481A0A
Device Firmware Version	11.37.2.59
Device Embedded Web UI Version	2.0.10.14
Alias	FI8910W
Alarm Status	None
DDNS Status	No Action
UPnP Status	No Action
MSN Status	No Action

**Method 2:** Upgrade firmware on IP Camera Tool.

**Step 1:** Highlight and right click the camera and then go to **Upgrade Firmware**.



**Step 2:** Enter the user and password of camera. The default user is 'admin' and password is blank.

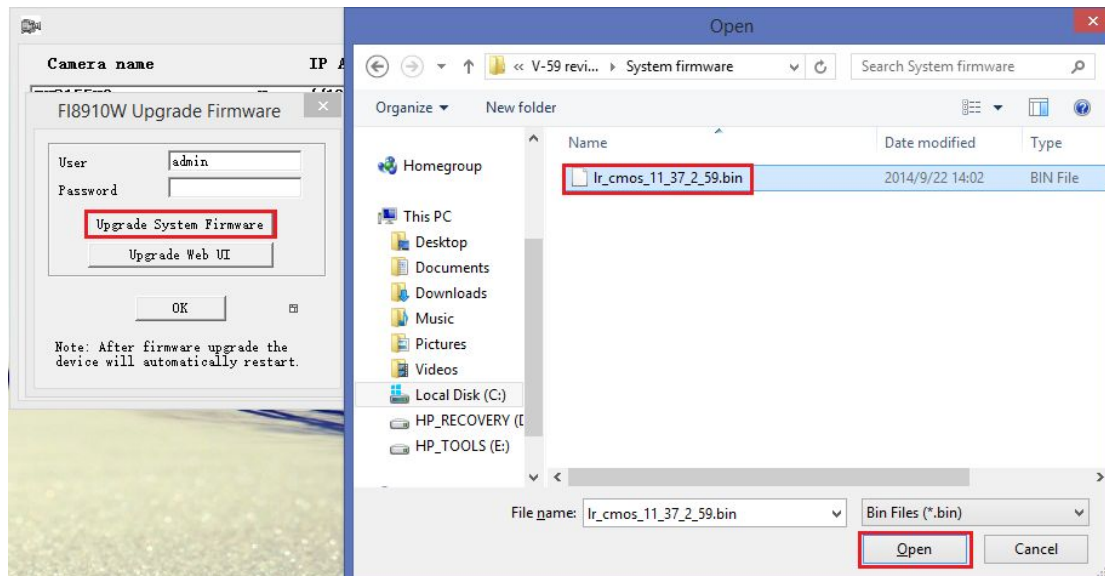


**Step 3:** Update System Firmware firstly.

Click **Upgrade System Firmware** → select system firmware **lr\_cmos\_11\_37\_2\_59.bin** → click **Open**.

After camera restarting itself, camera IP will re-appear in the IP Camera Tool, and the system firmware is loaded successfully.

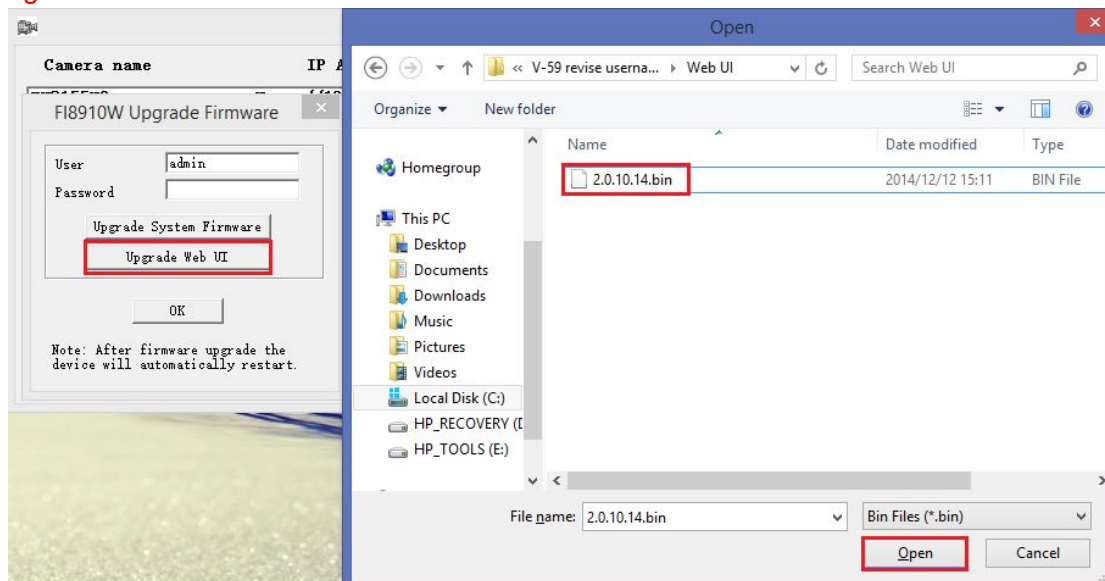
**Note:** Do not shut down the power of the camera before IP Camera Tool search the IP again!



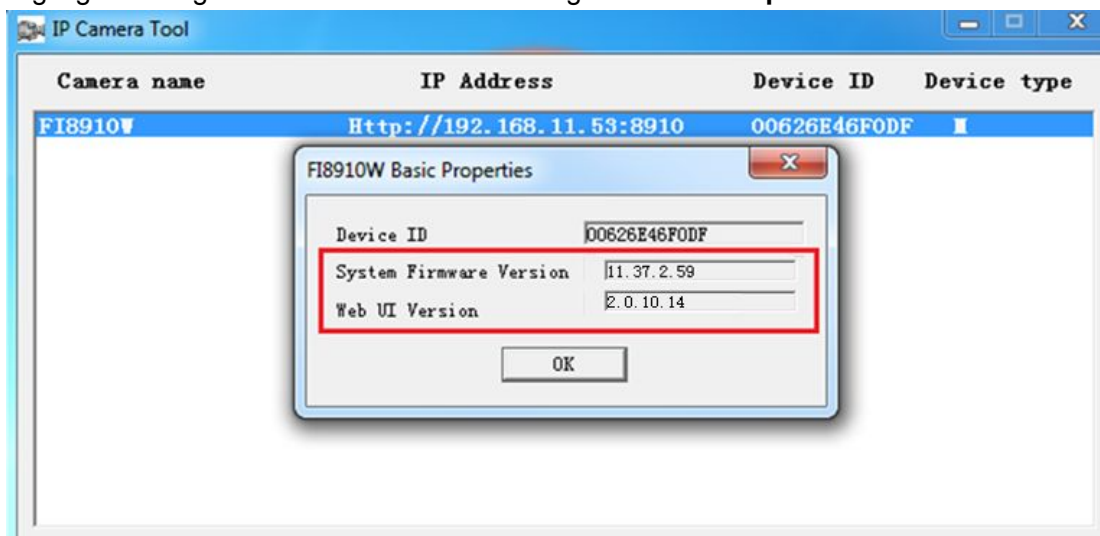
**Step 4:** Upgrade Web UI secondly.

Repeat step 1 and 2. Click **Upgrade Web UI** → select Web UI firmware **2.0.10.14.bin** → click **Open**. After camera restarting itself, the Web UI is loaded successfully.

**Note:** Do not shut down the power of the camera before IP Camera Tool search the IP again!



**Step 5:** You can check new firmware versions on **Basic Properties**.  
Highlight and right click the camera and then go to **Basic Properties**.



**After upgrading, please clear the cache of browser firstly, then open the browser again to log-in the camera;**

End

Edit by Technical Support Team